

MOSQUITOES IN YOUR BACKYARD

MOSQUITOES?

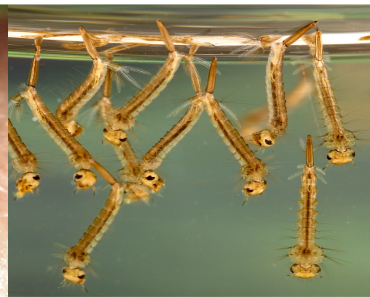
There are mosquitoes that specialize in living around your home by breeding in small containers. These mosquitoes include *Aedes aegypti* (Yellow Fever Mosquito) and *Aedes albopictus* (Asian Tiger Mosquito), which can transmit viruses including Zika, Dengue, and Chikungunya. These are small, dark mosquitoes with striped legs that often bite during the day, particularly early in the morning and a few hours before dusk.



Aedes aegypti



Aedes albopictus



Mosquito Larvae



Breeding Containers

AROUND MY HOME?

Mosquitoes only need a tiny amount of water to breed in. This is one reason they can be difficult to eliminate. Help out your community by reducing breeding areas around your home. Potential breeding sites include:

- ⇒ Bird baths
- ⇒ Old tires
- ⇒ Flower pots
- ⇒ Buckets
- ⇒ Rain barrels
- ⇒ Trash cans
- ⇒ Leaky spigots
- ⇒ Ornamental ponds
- ⇒ Clogged gutters
- ⇒ Pet dishes
- ⇒ Children's toys
- ⇒ Bromeliads
- ⇒ Boats
- ⇒ Watering troughs

WHAT CAN I DO?

INSPECT your yard for potential breeding sites.

DRAIN or throw out any containers found.

USE LARVICIDE for containers that cannot be drained, covered, or thrown out. Look for commercially available larvicides containing one of the following active ingredients: Methoprene, *Bacillus thuringiensis israelensis* (Bti), or Spinosad. Larvicides kill mosquito larvae or by preventing them from becoming adults.

FOLLOW THE DIRECTIONS on the label when applying any larvicide!

PROTECT yourself from bites by wearing long sleeves and pants, and using an EPA-approved repellent when spending time outdoors.

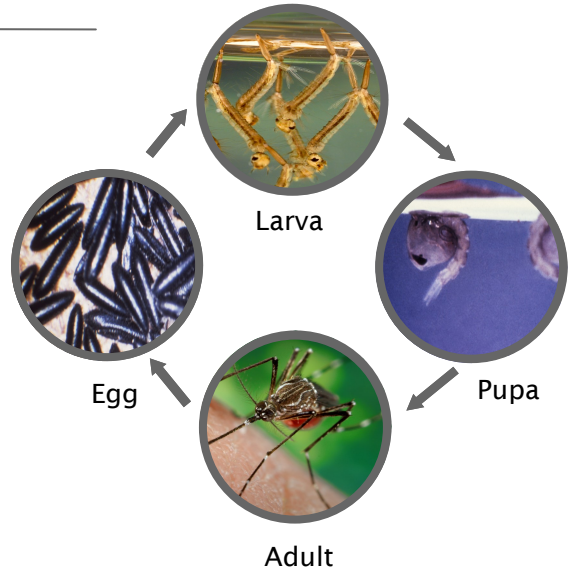
CALL Martin County Mosquito Control with any mosquito-related concerns!



TREAT YOURSELF! WITH LARVICIDE

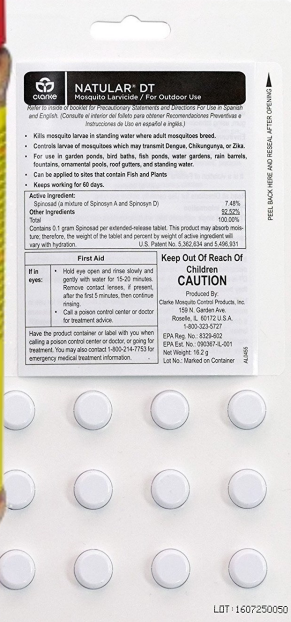
WHAT IS LARVICIDE?

Mosquitoes have four life stages: Eggs, Larvae, Pupae and Adults. When controlling mosquitoes, it is best to use an integrated approach. The most effective way to reduce mosquitoes is to eliminate standing water where they can breed. However, when this is not practical, both larvae and adults can be targeted through control efforts. A larvicide is a type of pesticide that specifically targets mosquito larvae. Larvicides are applied to standing water and containers to kill mosquito larvae directly or prevent them from becoming adults.



WHAT LARVICIDES CAN I USE?

We do not endorse any specific brand or product. However, there are commercially available products with the same active ingredients as those used by Mosquito Control. The active ingredients are insect growth regulators (methoprene), *Bacillus thuringiensis israelensis* (Bti), and Spinosad. Use your own discretion when choosing a product and **always follow the label directions for application**. Here are a few examples of products that you can buy to control mosquitoes around your home!



*The use of commercial names is to provide information about products available. Martin County does not endorse any specific brand or product.

Martin County Mosquito Control Phone: (772) 419-6974
www.martin.fl.us

