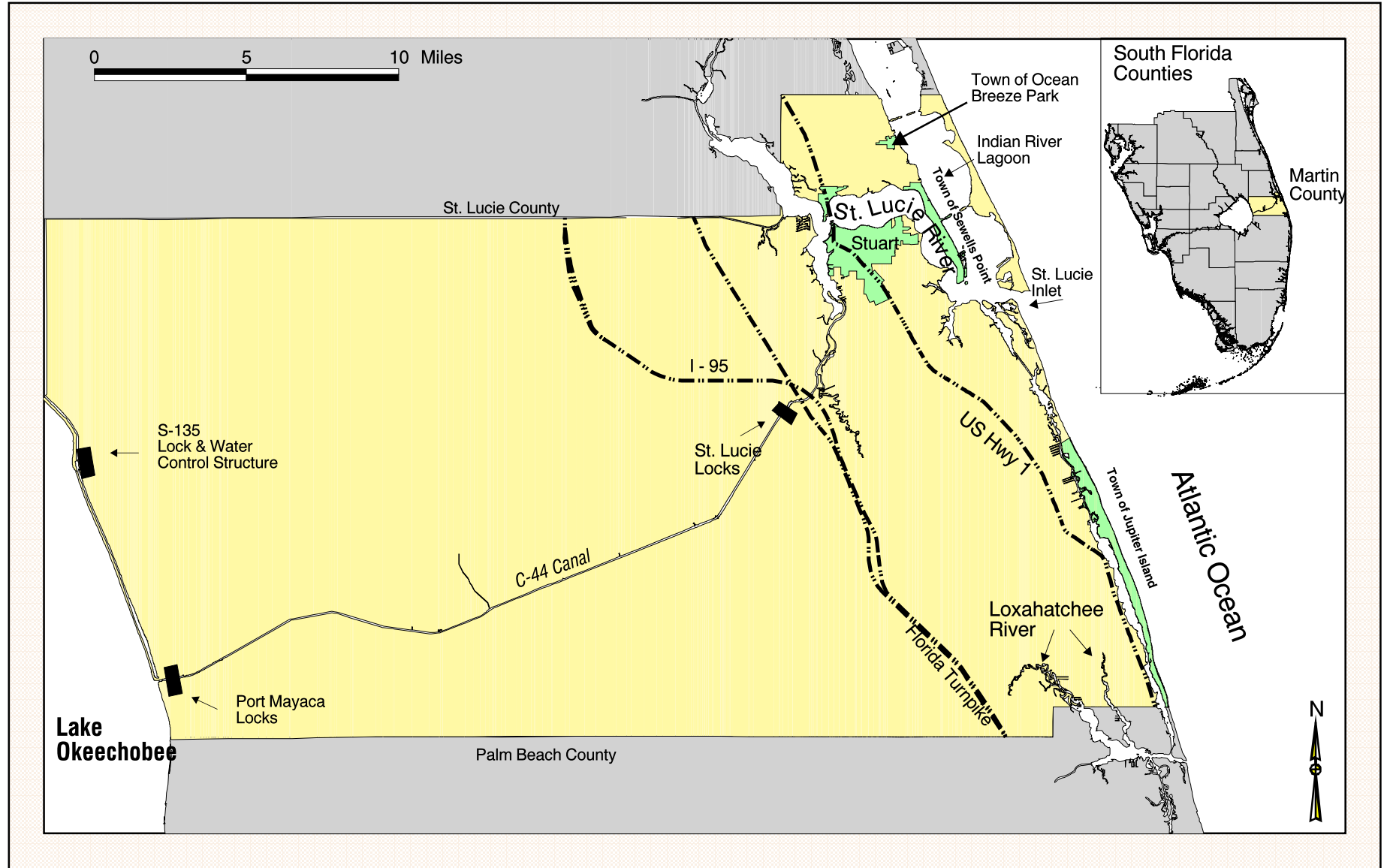


Martin County




AV Project: /data/gis/projects/gmd/manatee/manatee_plan5bw.apr
 Plot Name: /data/gis/projects/plots/mpp_figure_1

Figure 1



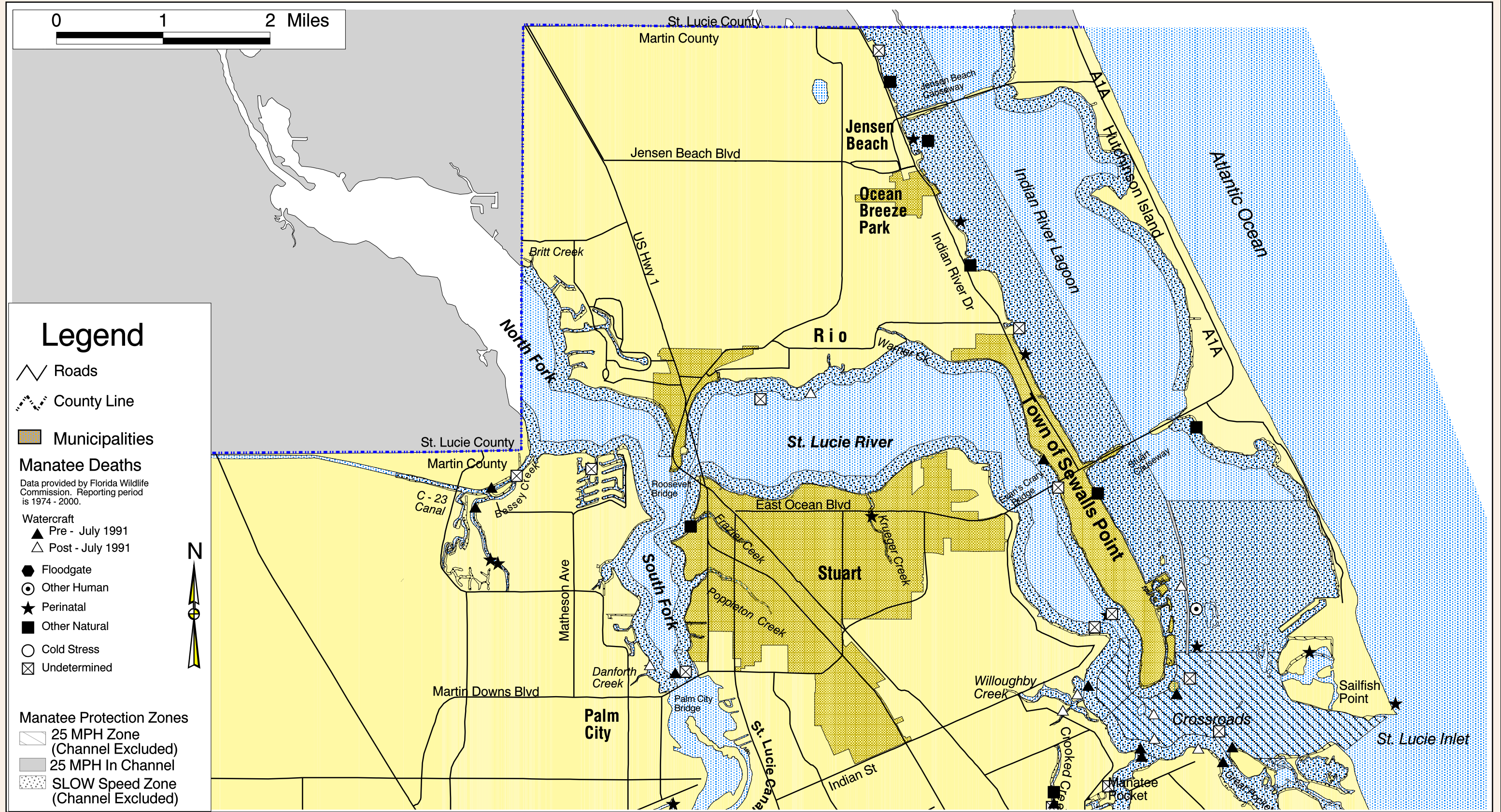
Disclaimer
 This Geographic Information System Map Product, received from Martin County ("COUNTY") in fulfillment of a public records request is provided "as is" without warranty of any kind, and the COUNTY expressly disclaims all express and implied warranties, including but not limited to the implied warranties of merchantability and fitness for a particular purpose. The COUNTY does not warrant, guarantee, or make any representations regarding the use, or the results of the use, of the information provided to you by the COUNTY in terms of correctness, accuracy, reliability, timeliness or otherwise. The entire risk as to the results and performance of any information obtained from the COUNTY is entirely assumed by the recipient.
 Please contact the responsible Martin County Department for specific determinations.

Growth Management Department
 Environmental Division

-  Major Roadways
-  Water Control Locks
-  Municipalities



Martin County, Florida Figure 2



Growth Management Department
 Environmental Division

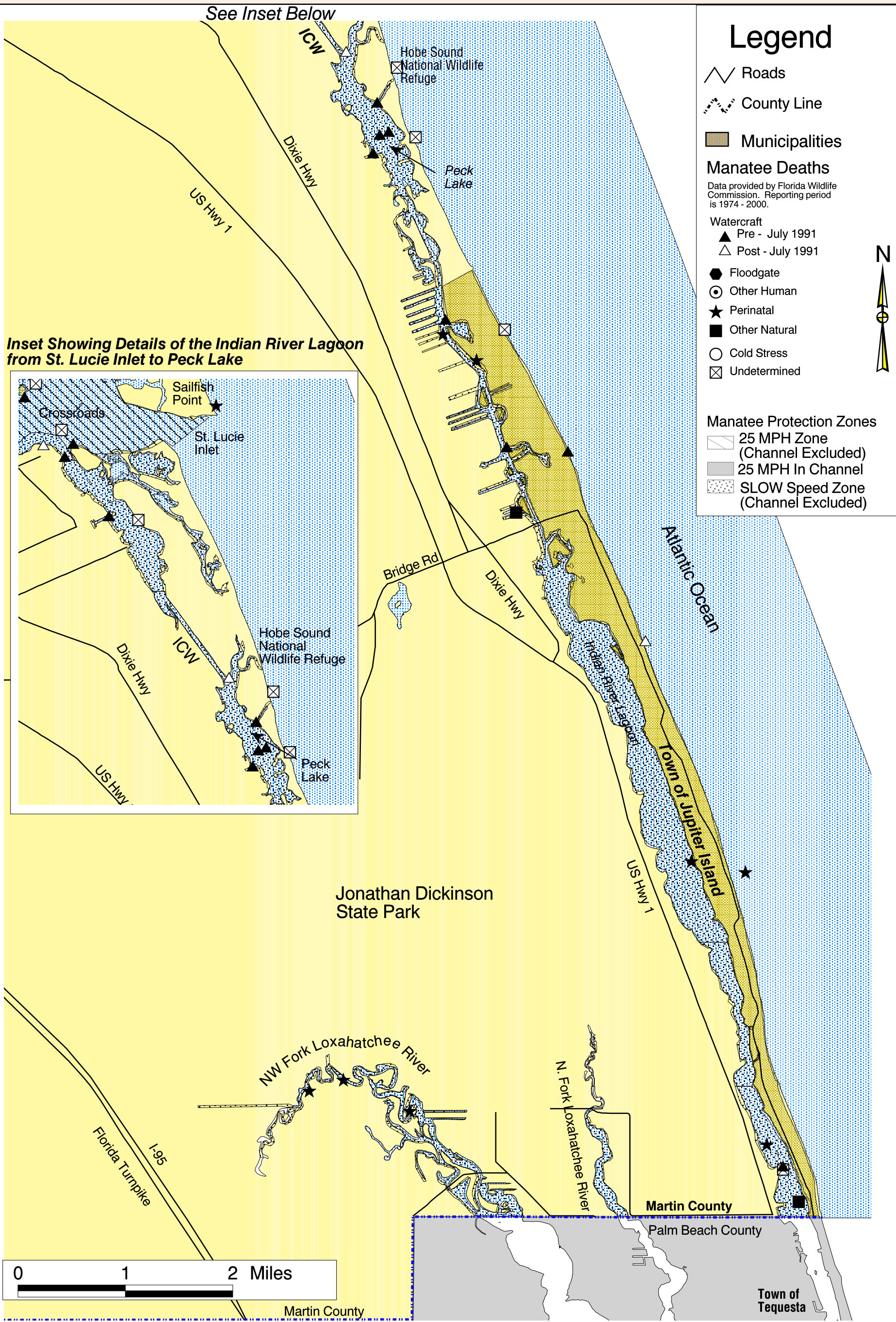
Disclaimer
 This Geographic Information System Map Product, received from Martin County ("COUNTY") in fulfillment of a public records request is provided "as is" without warranty of any kind, and the COUNTY expressly disclaims all express and implied warranties, including but not limited to the implied warranties of merchantability and fitness for a particular purpose. The COUNTY does not warrant, guarantee, or make any representations regarding the use, or the results of the use, of the information provided to you by the COUNTY in terms of correctness, accuracy, reliability, timeliness or otherwise. The entire risk as to the results and performance of any information obtained from the COUNTY is entirely assumed by the recipient.
 Please contact the responsible Martin County Department for specific determinations.



Martin County, Florida

Figure 3

AV Project: /data/gis/projects/gmd/manatee/manatee_plan5bw.apr
 Plot Name: /data/gis/projects/plots/mpp_figure_3



Disclaimer
 This Geographic Information System Map Product, received from Martin County ("COUNTY") in fulfillment of a public records request is provided "as is" without warranty of any kind, and the COUNTY expressly disclaims all express and implied warranties, including but not limited to the implied warranties of merchantability and fitness for a particular purpose. The COUNTY does not warrant, guarantee, or make any representations regarding the use, or the results of the use, of the information provided to you by the COUNTY in terms of correctness, accuracy, reliability, timeliness or otherwise. The entire risk as to the results and performance of any information obtained from the COUNTY is entirely assumed by the recipient.
 Please contact the responsible Martin County Department for specific determinations.

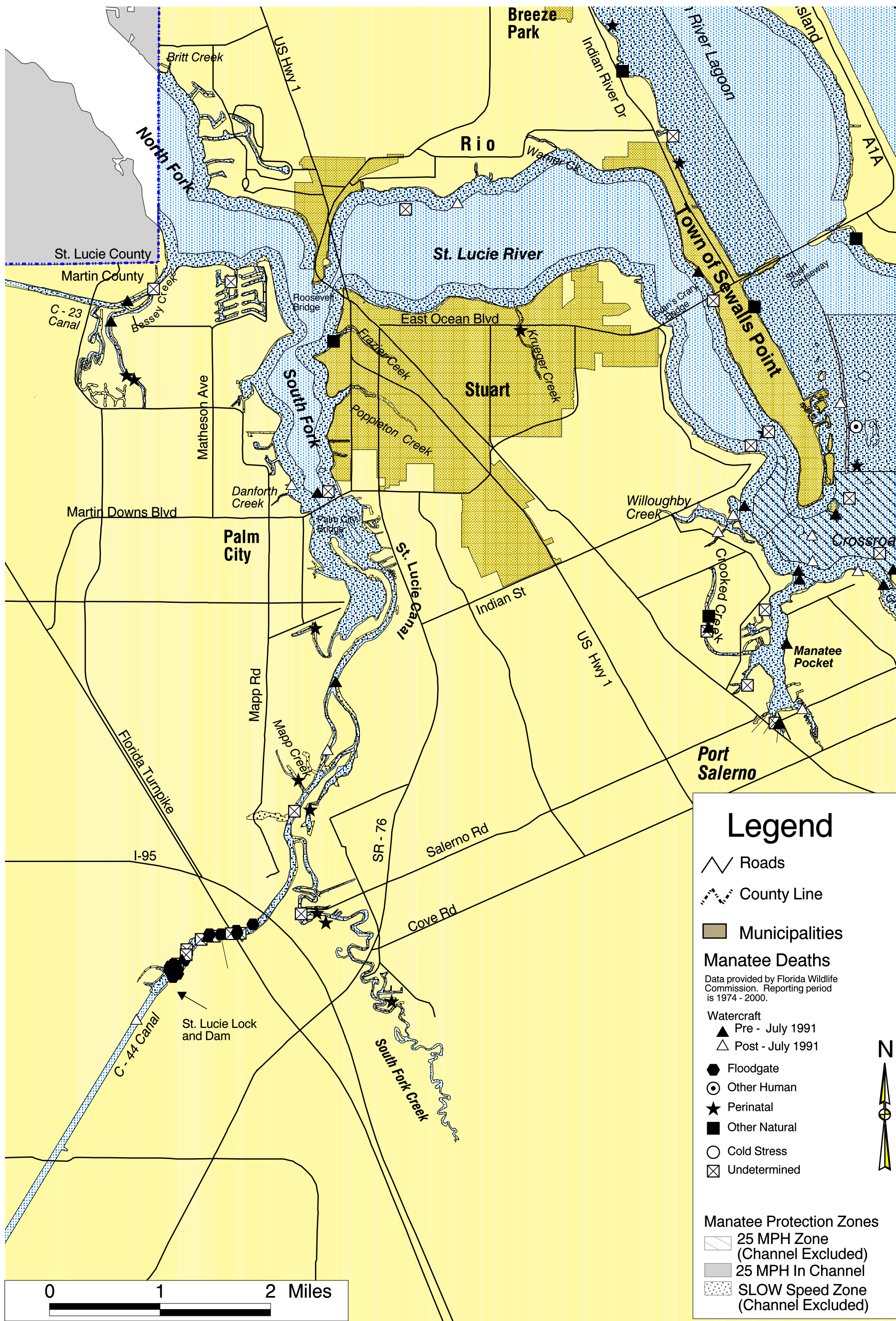
Growth Management Department
 Environmental Division



Martin County, Florida

Figure 4

AV Project: /data/gis/projects/gmd/manatee/manatee_plan5bw.apr
 Plot Name: /data/gis/projects/plots/mpp_figure_4



Legend

- Roads
- County Line
- Municipalities

Manatee Deaths

Data provided by Florida Wildlife Commission. Reporting period is 1974 - 2000.

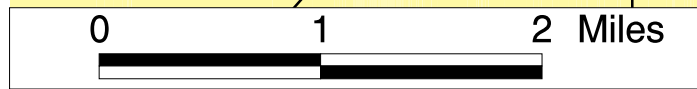
Watercraft

- Pre - July 1991
- Post - July 1991

- Floodgate
- Other Human
- Perinatal
- Other Natural
- Cold Stress
- Undetermined

Manatee Protection Zones

- 25 MPH Zone (Channel Excluded)
- 25 MPH In Channel
- SLOW Speed Zone (Channel Excluded)



Disclaimer
 This Geographic Information System Map Product, received from Martin County ("COUNTY") in fulfillment of a public records request is provided "as is" without warranty of any kind, and the COUNTY expressly disclaims all express and implied warranties, including but not limited to the implied warranties of merchantability and fitness for a particular purpose. The COUNTY does not warrant, guarantee, or make any representations regarding the use, or the results of the use, of the information provided to you by the COUNTY in terms of correctness, accuracy, reliability, timeliness or otherwise. The entire risk as to the results and performance of any information obtained from the COUNTY is entirely assumed by the recipient.
 Please contact the responsible Martin County Department for specific determinations.

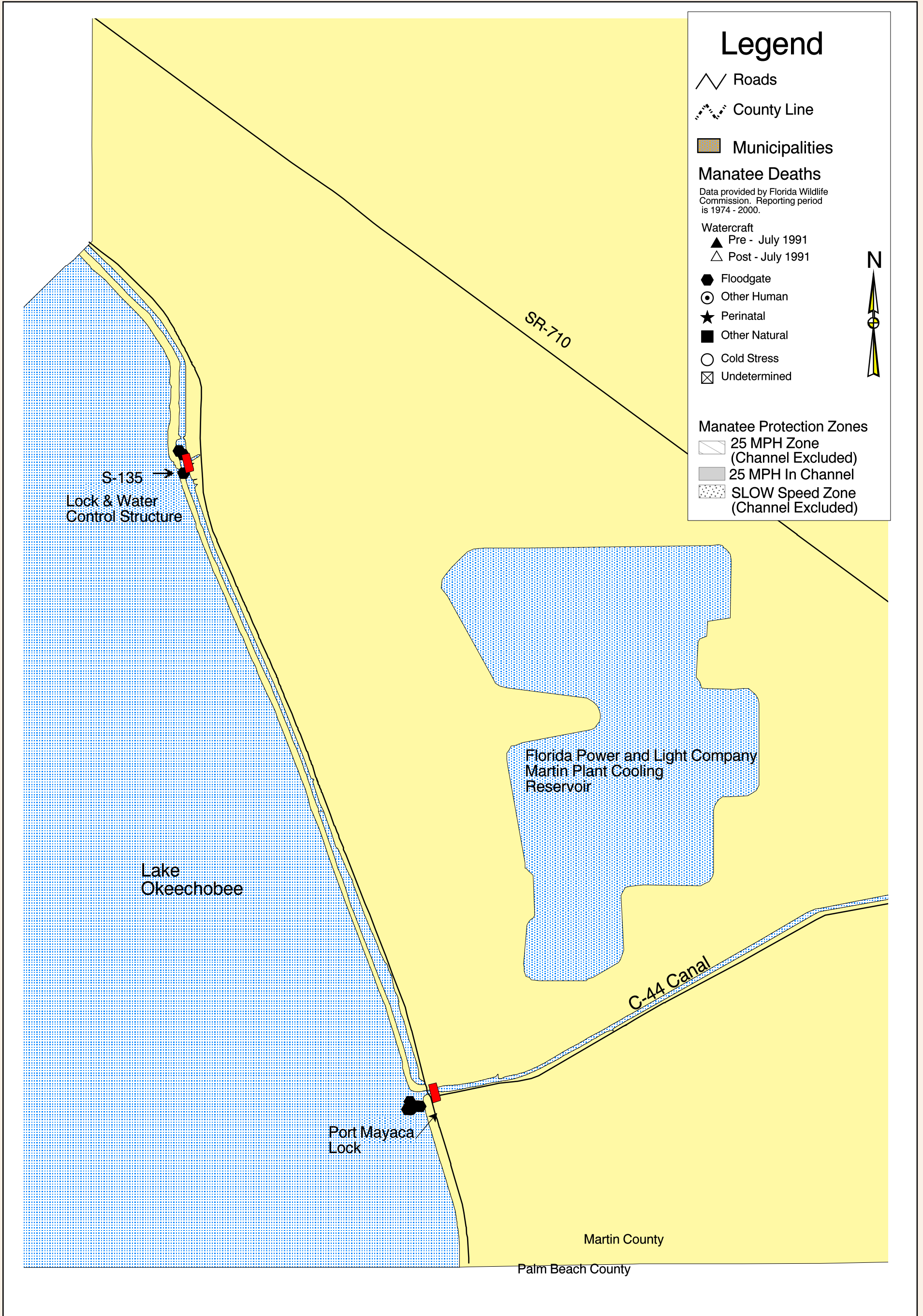
Growth Management Department
 Environmental Division



Martin County, Florida

Figure 5

AV Project: /data/gis/projects/gmd/manatee/manatee_plan5bw.apr
 Plot Name: /data/gis/projects/plots/mpp_figure_5



Legend

- Roads
- County Line
- Municipalities

Manatee Deaths

Data provided by Florida Wildlife Commission. Reporting period is 1974 - 2000.

- Watercraft**
- Pre - July 1991
 - Post - July 1991
- Floodgate
 - Other Human
 - Perinatal
 - Other Natural
 - Cold Stress
 - Undetermined



Manatee Protection Zones

- 25 MPH Zone (Channel Excluded)
- 25 MPH In Channel
- SLOW Speed Zone (Channel Excluded)

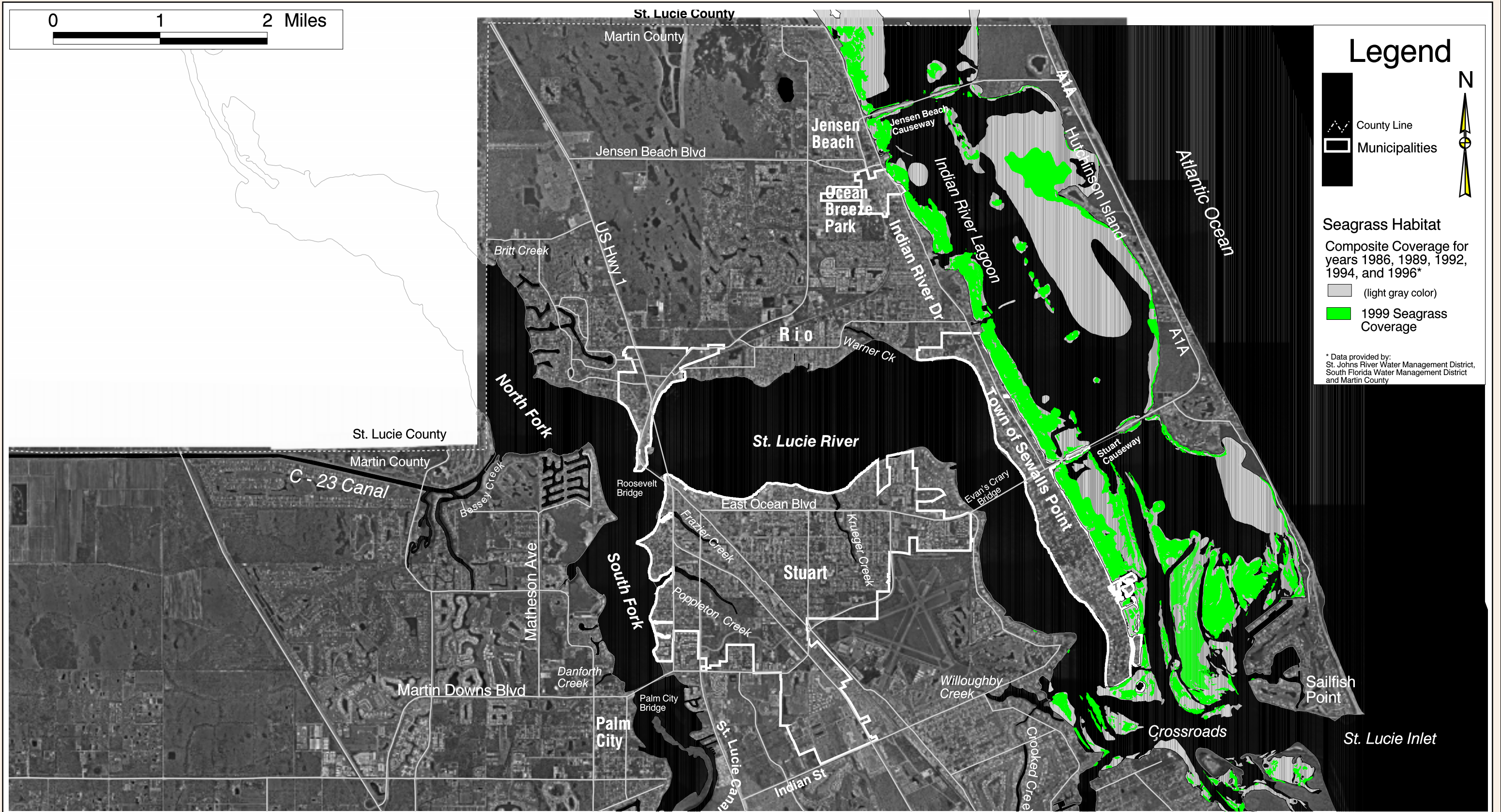
Disclaimer
 This Geographic Information System Map Product, received from Martin County ("COUNTY") in fulfillment of a public records request is provided "as is" without warranty of any kind, and the COUNTY expressly disclaims all express and implied warranties, including but not limited to the implied warranties of merchantability and fitness for a particular purpose. The COUNTY does not warrant, guarantee, or make any representations regarding the use, or the results of the use, of the information provided to you by the COUNTY in terms of correctness, accuracy, reliability, timeliness or otherwise. The entire risk as to the results and performance of any information obtained from the COUNTY is entirely assumed by the recipient.
 Please contact the responsible Martin County Department for specific determinations.

Growth Management Department
 Environmental Division



Martin County, Florida

Figure 6



Legend

- County Line
- Municipalities

Seagrass Habitat

Composite Coverage for years 1986, 1989, 1992, 1994, and 1996*

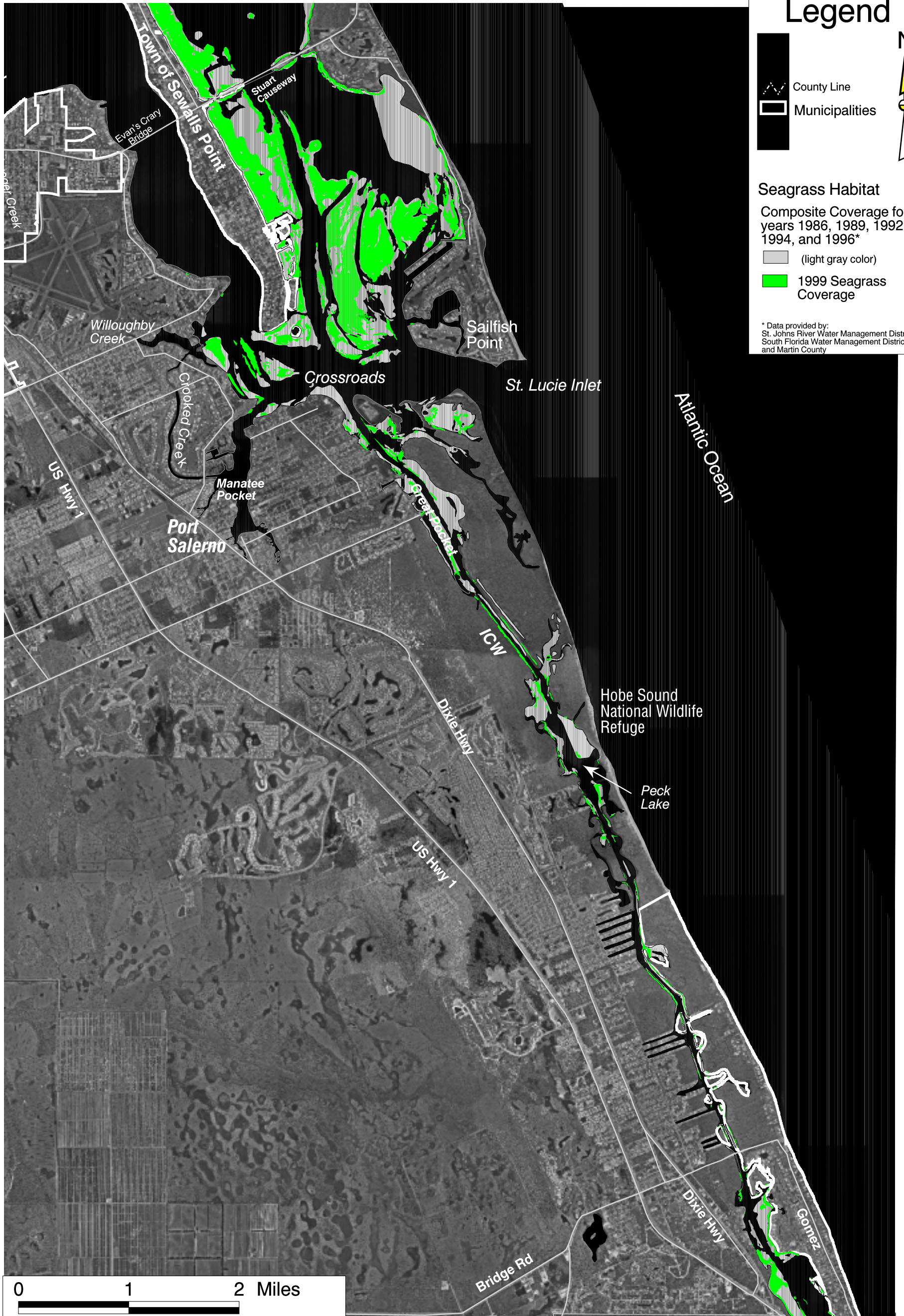
- (light gray color)
- 1999 Seagrass Coverage

* Data provided by: St. Johns River Water Management District, South Florida Water Management District and Martin County



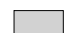

Martin County, Florida

Figure 7

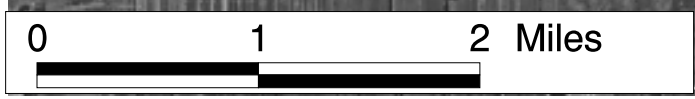


Legend

-  County Line
-  Municipalities

- #### Seagrass Habitat
- Composite Coverage for years 1986, 1989, 1992, 1994, and 1996*
-  (light gray color)
 -  1999 Seagrass Coverage

* Data provided by: St. Johns River Water Management District, South Florida Water Management District and Martin County



Disclaimer
This Geographic Information System Map Product, received from Martin County (COUNTY) in fulfillment of a public records request is provided "as is" without warranty of any kind, and the COUNTY expressly disclaims all express and implied warranties, including but not limited to the implied warranties of merchantability and fitness for a particular purpose. The COUNTY does not warrant, guarantee, or make any representations regarding the use, or the results of the use, of the information provided to you by the COUNTY in terms of correctness, accuracy, reliability, timeliness or otherwise. The entire risk as to the results and performance of any information obtained from the COUNTY is entirely assumed by the recipient.
Please contact the responsible Martin County Department for specific determinations.

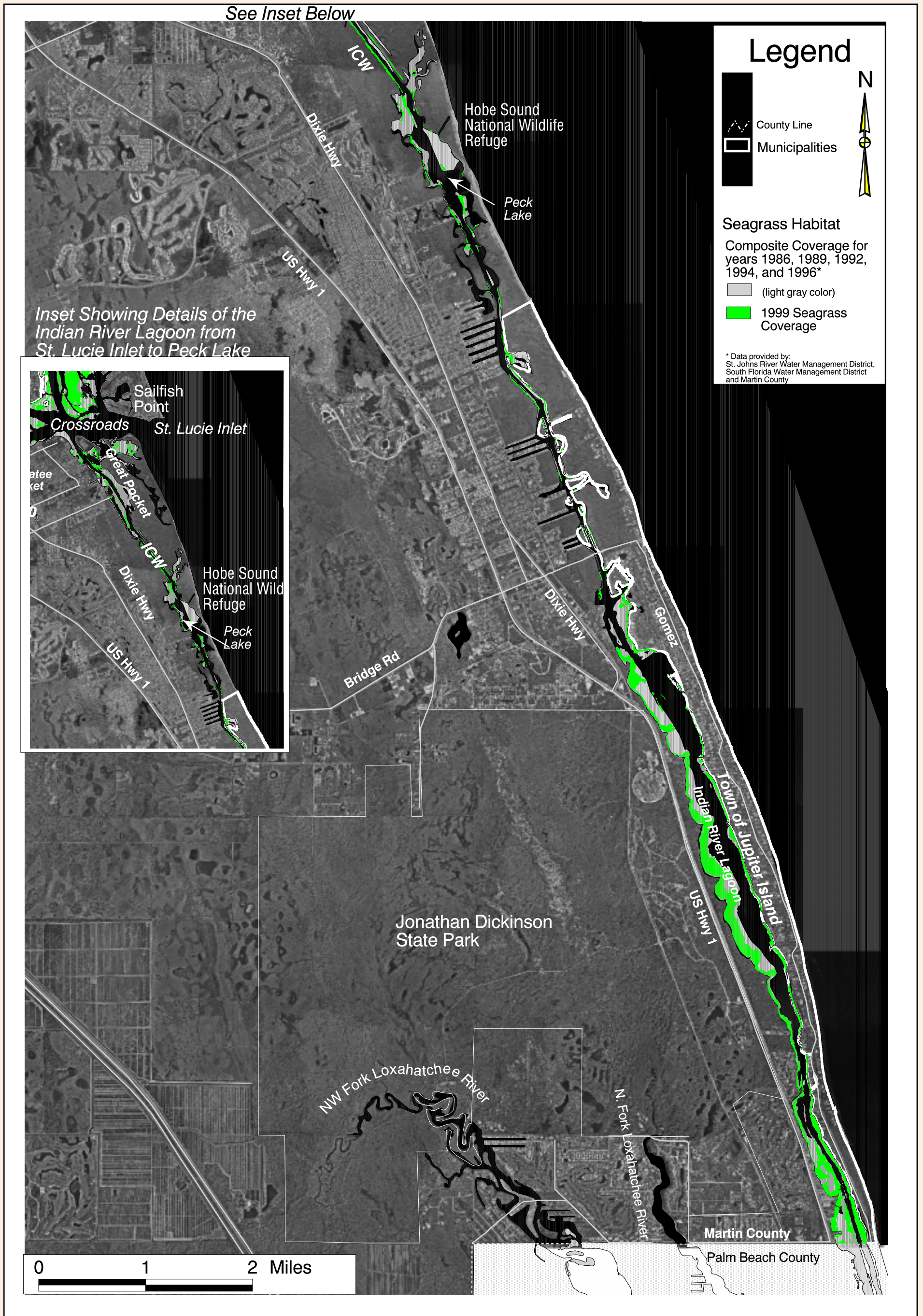


Study area image background from county wide 1995 orthophoto coverage.
AV Project: /data/gis/projects/gmd/manatee/manatee_plan5bw.apr
Plot Name: /data/gis/projects/plots/MPP/mpp_figure_7



Martin County, Florida

Figure 8



Disclaimer
This Geographic Information System Map Product, received from Martin County (COUNTY) in fulfillment of a public records request is provided "as is" without warranty of any kind, and the COUNTY expressly disclaims all express and implied warranties, including but not limited to the implied warranties of merchantability and fitness for a particular purpose. The COUNTY does not warrant, guarantee, or make any representations regarding the use, or the results of the use, of the information provided to you by the COUNTY in terms of correctness, accuracy, reliability, timeliness or otherwise. The entire risk as to the results and performance of any information obtained from the COUNTY is entirely assumed by the recipient.
Please contact the responsible Martin County Department for specific determinations.

GMD
Environmental
Division

Study area image background from county wide 1995 orthophoto coverage.

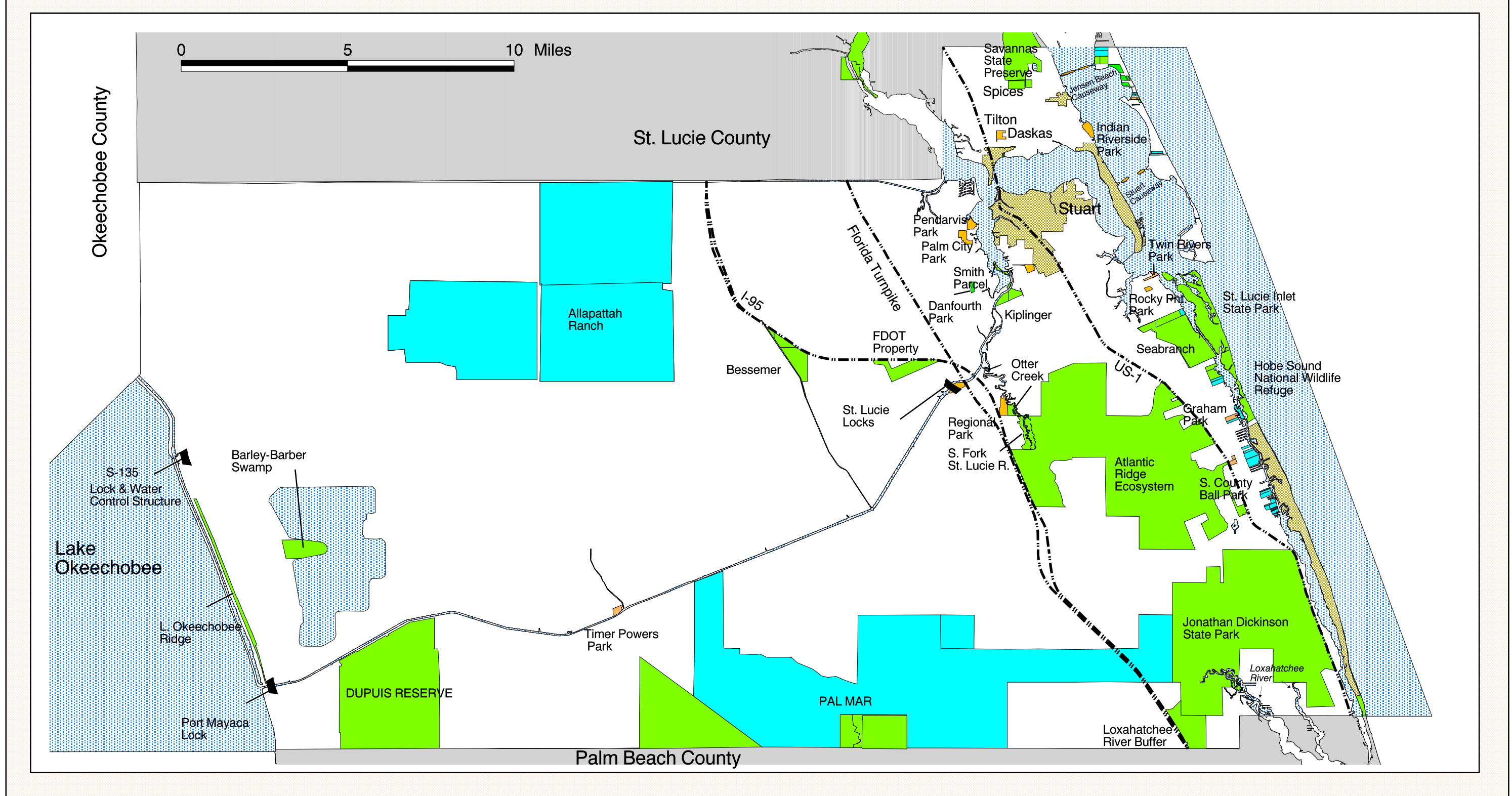
AV Project: /data/gis/projects/gmd/manatee/manatee_plan5bw.apr
Plot Name: /data/gis/projects/plots/mpp_figure_8



Martin County

Figure 15

AV Project: /data/gis/projects/gmd/manatee/manatee_plan5bw.apr
 Plot Name: /data/gis/projects/plots/mpp_figure_15



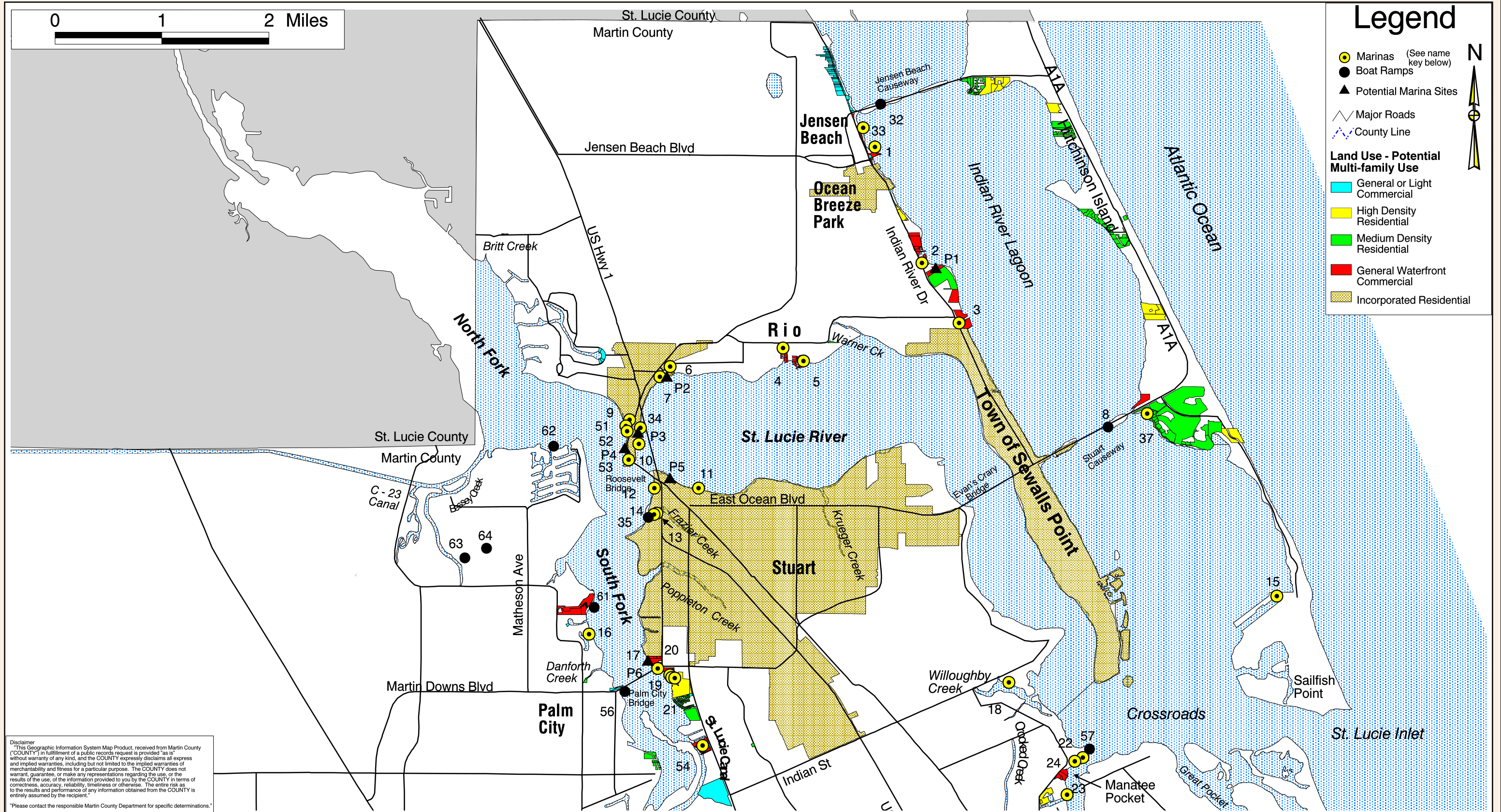
Disclaimer
 This Geographic Information System Map Product, received from Martin County ("COUNTY") in fulfillment of a public records request is provided "as is" without warranty of any kind, and the COUNTY expressly disclaims all express and implied warranties, including but not limited to the implied warranties of merchantability and fitness for a particular purpose. The COUNTY does not warrant, guarantee, or make any representations regarding the use, or the results of the use, of the information provided to you by the COUNTY in terms of correctness, accuracy, reliability, timeliness or otherwise. The entire risk as to the results and performance of any information obtained from the COUNTY is entirely assumed by the recipient.
 Please contact the responsible Martin County Department for specific determinations.

GMD
 Environmental
 Division

Major Roadways	Conservation Lands
Water Control Locks	Parks
Municipalities	Proposed Conservation Acquisitions

Martin County, Florida

Figure 16



Legend

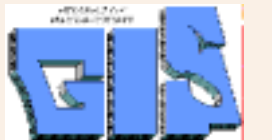
- Marinas (See name key below)
 - Boat Ramps
 - ▲ Potential Marina Sites
 - Major Roads
 - - - County Line
- Land Use - Potential Multi-family Use**
- General or Light Commercial
 - High Density Residential
 - Medium Density Residential
 - General Waterfront Commercial
 - Incorporated Residential

Disclaimer
 This Geographic Information System Map Product, received from Martin County ("COUNTY") in fulfillment of a public records request is provided "as is" without warranty of any kind, and the COUNTY expressly disclaims all express and implied warranties, including but not limited to the implied warranties of merchantability and fitness for a particular purpose. The COUNTY does not warrant, guarantee, or make any representations regarding the use, or the results of the use, of the information provided to you by the COUNTY in terms of correctness, accuracy, reliability, timeliness or otherwise. The entire risk as to the results and performance of any information obtained from the COUNTY is entirely assumed by the recipient.
 Please contact the responsible Martin County Department for specific determinations.

Marina / Boat Ramp Name

1 SUNDANCE MARINA	9 HARBOR INN DOCKS	17 BASSETT BOATS	25 CHAPMAN SCHOOL	33 NEW WAVE RUNNERS	40 BLOWING ROCKS MARINA	48 JUPITER ISLAND CLUB MARINA	55 BEACH WATER SPORTS	63 FOX RUN BOAT RAMP
2 ANCHOR'S AWEIGH MARINA	10 NORTHSIDE MARINE SERVICES	18 WHITICAR BOAT WORKS	26 HINCKLEY BOATYARD	34 OUTBOARD MARINE CORP	41 SEAGATE MARINA	49 JOHNNATHAN DICKINSON STATE PARK BOAT RAMP	56 LEIGHTON PARK RAMP	64 OAK RIDGE BOAT RAMP
3 OUTRIGGER HARBOR MARINA	11 WATERSIDE PLACE DOCKS	19 MONTEREY MOTEL AND MARINA	27 PIRATES COVE MARINA	35 SHEPARD PARK RAMP	42 STUART YACHT BUILDERS	50 STUART YACHT SALES	57 SANDSPRIT PARK RAMP	
4 STEVE LAZARUS YACHTS	12 SOUTHPORT ANCHORAGE	20 STELLA MARINE	28 A&J BOATWORKS	36 BROWARD STREET RAMP	43 LOST RIVER MARINE	51 STEVE LAZARUS YACHT SALES	58 PHIPPS PARK RAMP	
5 PELICAN'S NEST MARINA	13 TREASURE COAST BOATING	21 RIVERWATCH MARINA	29 MANATEE MARINA	37 MARRIOTT MARINA	44 AMERICAN CUSTOM YACHTS	52 THE ALLIED MARINE GROUP	59 INDIANTOWN MARINA	
6 ST LUCIE MARINE	14 FREEDOM MARINE	22 SAILFISH MARINA	30 MAR-TECH YACHT FITTERS	38 JUPITER HILLS LIGHTHOUSE MARINA	45 JIMMY GRAHAM PARK RAMP	53 STUART HARBOR DOCKAGE	60 TIMER POWER RAMP	
7 NORTHSIDE MARINA	15 SAILFISH POINT MARINA	23 FINEST KIND MARINA	31 LOBLOLLY BAY MARINA	39 PELICAN BAY YACHT CLUB	46 PILOTS COVE DOCKS	54 SEAGREEN MARINA	61 PENDARVIS COVE PARK	
8 STUART CAUSEWAY PARK RAMP	16 MARTIN COUNTY MARINE	24 MARINER CAY MARINA	32 JENSEN BEACH CAUSEWAY PARK RAMP				62 SEAGATE HARBOR/LIGHTHOUSE POINT	

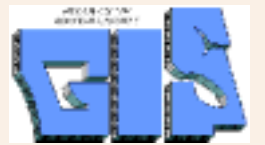
Locations preceded with a "P" indicate potential marina sites



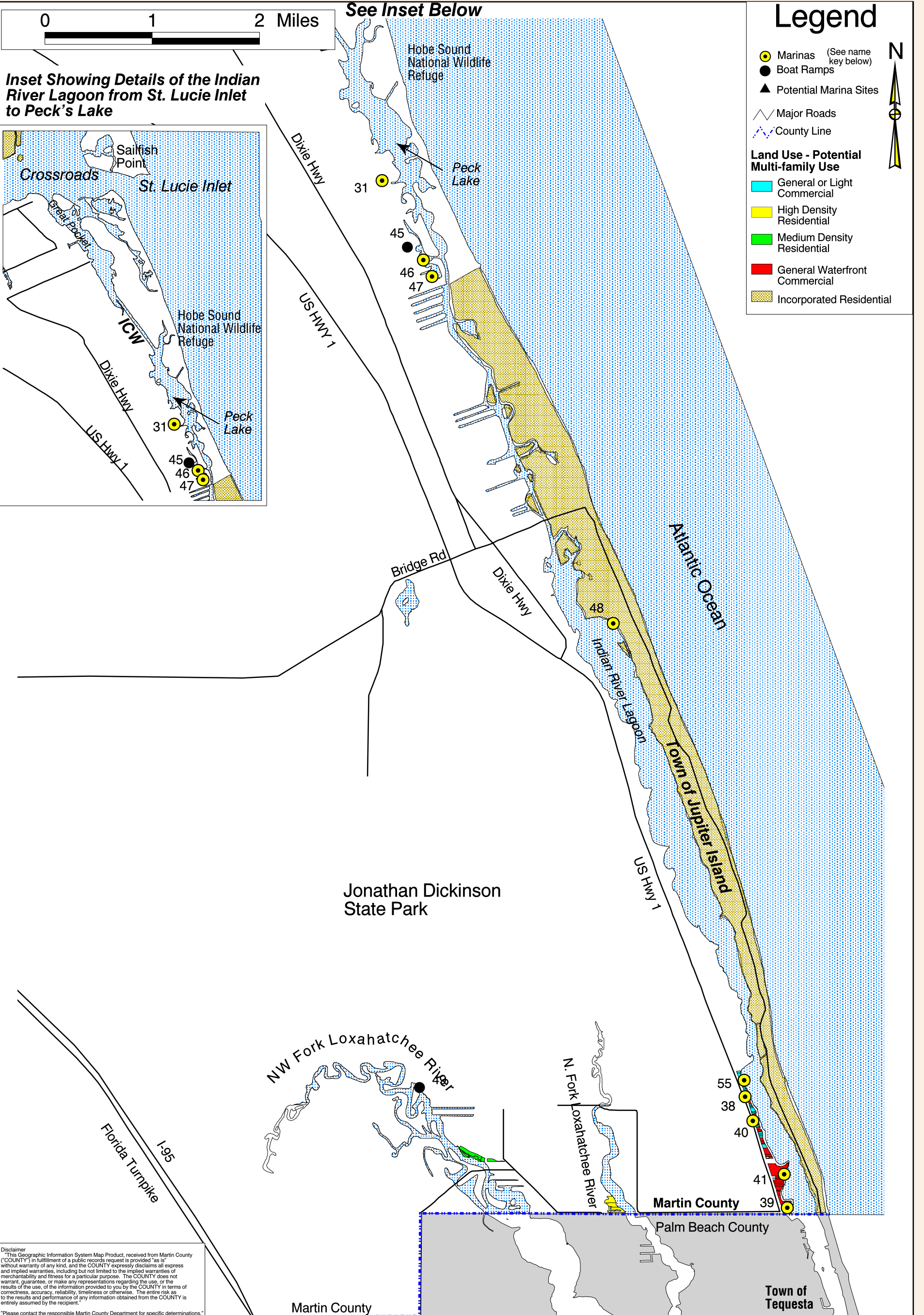


Martin County, Florida

Figure 17



AV Project: /data/gis/projects/gmd/manatee/manatee_plan5bw.apr
 Plot Name: /data/gis/projects/plots/mpp_figure_17



Disclaimer
 "This Geographic Information System Map Product, received from Martin County (COUNTY) in fulfillment of a public records request is provided 'as is' without warranty of any kind, and the COUNTY expressly disclaims all express and implied warranties, including but not limited to the implied warranties of merchantability and fitness for a particular purpose. The COUNTY does not warrant, guarantee, or make any representations regarding the use, or the results of the use, of the information provided to you by the COUNTY in terms of correctness, accuracy, reliability, timeliness or otherwise. The entire risk as to the results and performance of any information obtained from the COUNTY is entirely assumed by the recipient."
 Please contact the responsible Martin County Department for specific determinations.

Marina / Boat Ramp Name							
1 SUNDANCE MARINA	10 NORTHSIDE MARINE SERVICES	19 MONTEREY MOTEL AND MARINA	28 A&J BOATWORKS	36 BROWARD STREET RAMP	44 AMERICAN CUSTOM YACHTS	52 THE ALLIED MARINE GROUP	61 PENDARVIS COVE PARK
2 ANCHOR'S AWEIGH MARINA	11 WATERSIDE PLACE DOCKS	20 STELLA MARINE	29 MANATEE MARINA	37 MARRIOTT MARINA	45 JIMMY GRAHAM PARK RAMP	53 STUART HARBOR DOCKAGE	62 SEAGATE HARBOR/ LIGHHOUSE POINT
3 OUTRIGGER HARBOR MARINA	12 SOUTHPORT ANCHORAGE	21 RIVERWATCH MARINA	30 MAR-TECH YACHT FITTERS	38 JUPITER HILLS LIGHTHOUSE MARINA	46 PILOTS COVE DOCKS	54 SEAGREEN MARINA	63 FOX RUN BOAT RAMP
4 STEVE LAZARUS YACHTS	13 TREASURE COAST BOATING	22 SAILFISH MARINA	31 LOBLOLLY BAY MARINA	47 MARINA BAY DOCKS	48 JUPITER ISLAND CLUB MARINA	56 LEIGHTON PARK RAMP	64 OAK RIDGE BOAT RAMP
5 PELICAN'S NEST MARINA	14 FREEDOM MARINE	23 FINEST KIND MARINA	32 JENSEN BEACH CAUSEWAY PARK RAMP	39 PELICAN BAY YACHT CLUB	49 JOHNATHAN DICKINSON STATE PARK BOAT RAMP	57 SANDSPRIT PARK RAMP	
6 ST LUCIE MARINE	15 SAILFISH POINT MARINA	24 MARINER CAY MARINA	33 NEW WAVE RUNNERS	40 BLOWING ROCKS MARINA	50 STUART YACHT SALES	58 PHIPPS PARK RAMP	
7 NORTHSIDE MARINA	16 MARTIN COUNTY MARINE	25 CHAPMAN SCHOOL	34 OUTBOARD MARINE CORP	41 SEAGATE MARINA	51 STEVE LAZARUS YACHT SALES	59 INDIANTOWN MARINA	
8 STUART CAUSEWAY PARK RAMP	17 BASSETT BOATS	26 HINCKLEY BOATYARD	35 SHEPARD PARK RAMP	42 STUART YACHT BUILDERS		60 TIMER POWER RAMP	
9 HARBOR INN DOCKS	18 WHITTICAR BOAT WORKS	27 PIRATES COVE MARINA		43 LOST RIVER MARINE			

Locations preceded with a "P" indicate potential marina sites

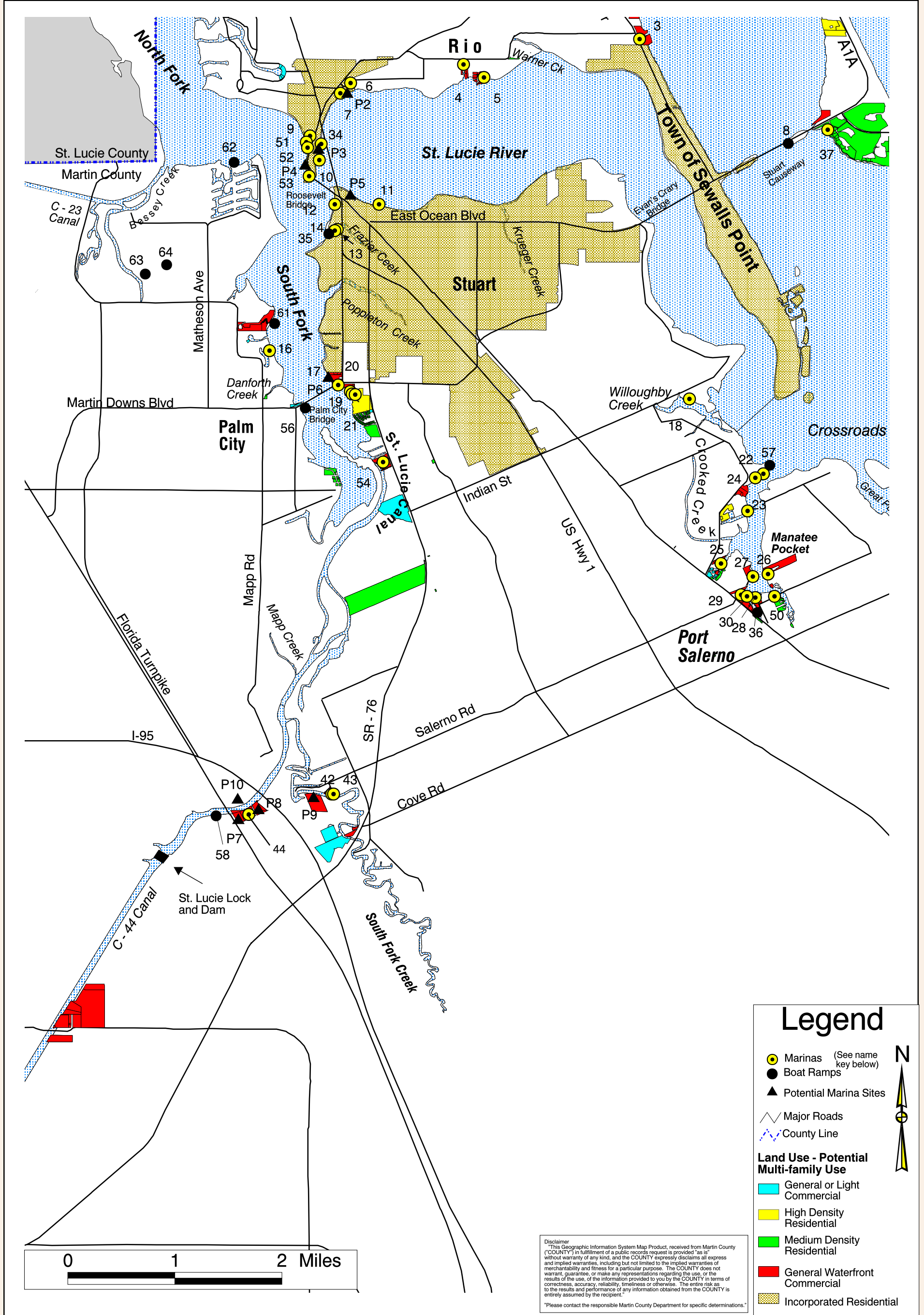


Martin County, Florida

Figure 18



AV Project: /data/gis/projects/gmd/manatee/manatee_plan5bw.apr
 Plot Name: /data/gis/projects/plots/mpp_figure_18



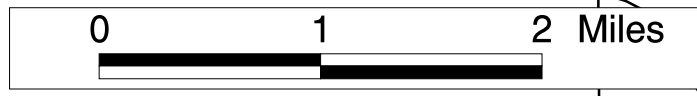
Legend

- Marinas (See name key below)
- Boat Ramps
- ▲ Potential Marina Sites
- Major Roads
- County Line

Land Use - Potential Multi-family Use

- General or Light Commercial
- High Density Residential
- Medium Density Residential
- General Waterfront Commercial
- Incorporated Residential

Disclaimer: "This Geographic Information System Map Product, received from Martin County ("COUNTY") in fulfillment of a public records request is provided "as is" without warranty of any kind, and the COUNTY expressly disclaims all express and implied warranties, including but not limited to the implied warranties of merchantability and fitness for a particular purpose. The COUNTY does not warrant, guarantee, or make any representations regarding the use, or the results of the use, of the information provided to you by the COUNTY in terms of correctness, accuracy, reliability, timeliness or otherwise. The entire risk as to the results and performance of any information obtained from the COUNTY is entirely assumed by the recipient."
 Please contact the responsible Martin County Department for specific determinations.

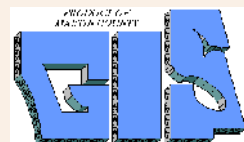


Marina / Boat Ramp Name							
1 SUNDANCE MARINA	10 NORTHSIDE MARINE SERVICES	19 MONTEREY MOTEL AND MARINA	28 A&J BOATWORKS	36 BROWARD STREET RAMP	44 AMERICAN CUSTOM YACHTS	52 THE ALLIED MARINE GROUP	61 PENDARVIS COVE PARK
2 ANCHOR'S AWEIGH MARINA	11 WATERSIDE PLACE DOCKS	20 STELLA MARINE	29 MANATEE MARINA	37 MARRIOTT MARINA	45 JIMMY GRAHAM PARK RAMP	53 STUART HARBOR DOCKAGE	62 SEAGATE HARBOR/
3 OUTRIGGER HARBOR MARINA	12 SOUTHPORT ANCHORAGE	21 RIVERWATCH MARINA	30 MAR-TECH YACHT FITTERS	38 JUPITER HILLS LIGHTHOUSE MARINA	46 PILOTS COVE DOCKS	54 SEAGREEN MARINA	LIGHTHOUSE POINT
4 STEVE LAZARUS YACHTS	13 TREASURE COAST BOATING	22 SAILFISH MARINA	31 LOBLOLLY BAY MARINA	39 PELICAN BAY YACHT CLUB	47 MARINA BAY DOCKS	55 BEACH WATER SPORTS	63 FOX RUN BOAT RAMP
5 PELICAN'S NEST MARINA	14 FREEDOM MARINE	23 FINEST KIND MARINA	32 JENSEN BEACH CAUSEWAY PARK RAMP	40 BLOWING ROCKS MARINA	48 JUPITER ISLAND CLUB MARINA	56 LEIGHTON PARK RAMP	64 OAK RIDGE BOAT RAMP
6 ST LUCIE MARINE	15 SAILFISH POINT MARINA	24 MARINER CAY MARINA	33 NEW WAVE RUNNERS	41 SEAGATE MARINA	49 JOHNATHAN DICKINSON STATE PARK BOAT RAMP	57 SANDSPRIT PARK RAMP	
7 NORTHSIDE MARINA	16 MARTIN COUNTY MARINE	25 CHAPMAN SCHOOL	34 OUTBOARD MARINE CORP	42 STUART YACHT BUILDERS	50 STUART YACHT SALES	58 PHIPPS PARK RAMP	
8 STUART CAUSEWAY PARK RAMP	17 BASSETT BOATS	26 HINCKLEY BOATYARD	35 SHEPARD PARK RAMP	43 LOST RIVER MARINE	51 STEVE LAZARUS YACHT SALES	59 INDIANTOWN MARINA	Locations preceded with a "P"
9 HARBOR INN DOCKS	18 WHITTICAR BOAT WORKS	27 PIRATES COVE MARINA				60 TIMER POWER RAMP	indicate potential marina sites



Martin County, Florida

Figure 19



AV Project: /data/gis/projects/gmd/manatee/manatee_plan5bw.apr
 Plot Name: /data/gis/projects/plots/mpp_figure_19

Legend

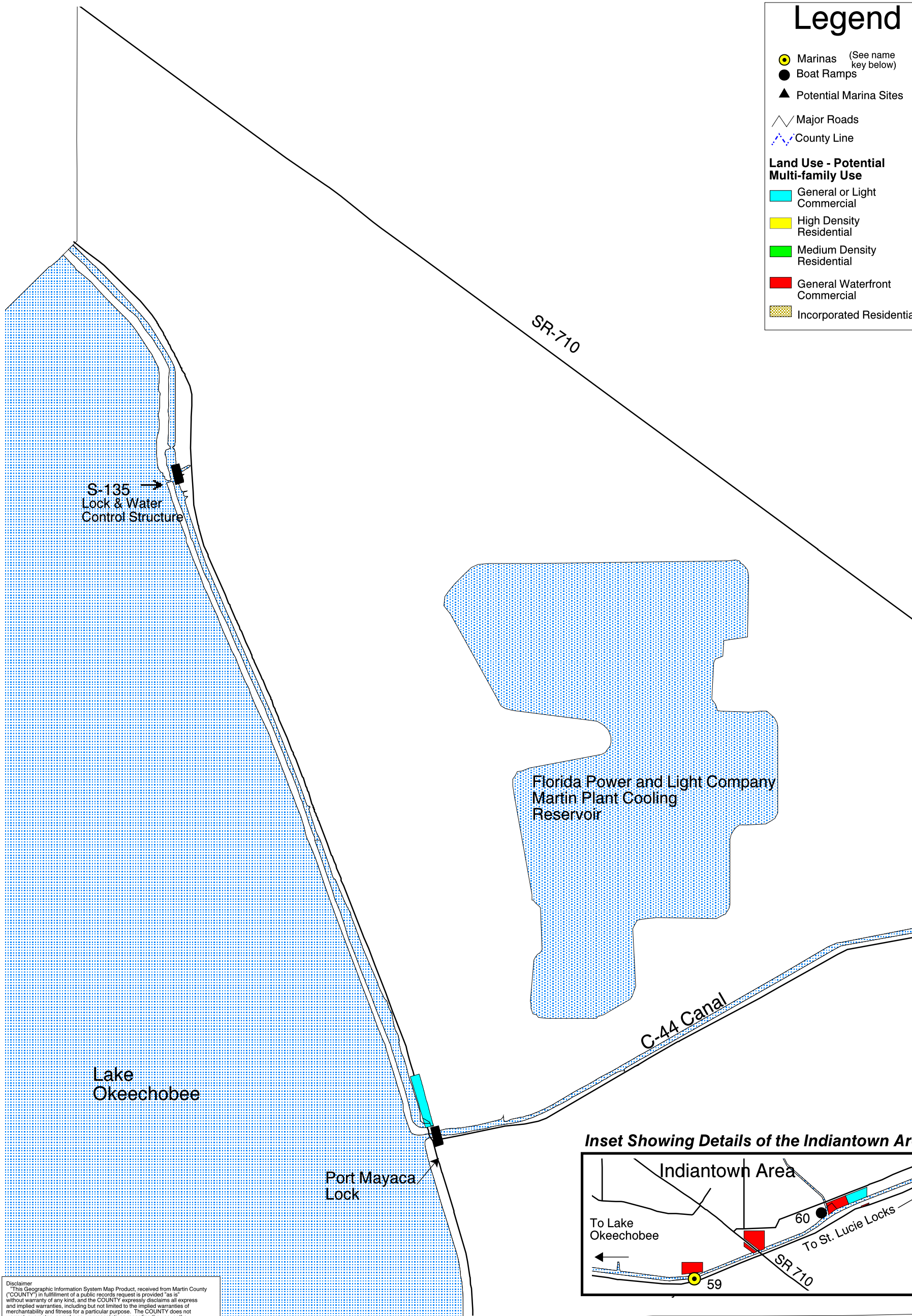
- Marinas (See name key below)
- Boat Ramps
- ▲ Potential Marina Sites

- Major Roads
- County Line

Land Use - Potential Multi-family Use

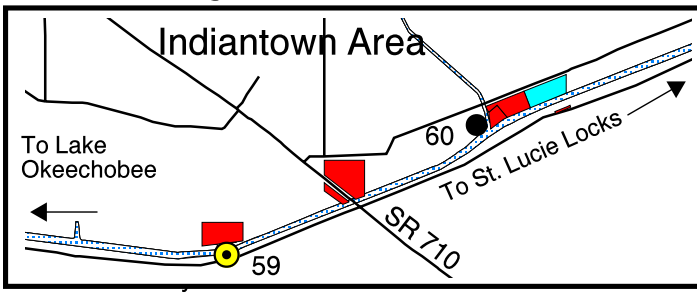
- General or Light Commercial
- High Density Residential
- Medium Density Residential
- General Waterfront Commercial
- Incorporated Residential

N



See Inset

Inset Showing Details of the Indiantown Area



Disclaimer
 "This Geographic Information System Map Product, received from Martin County ("COUNTY") in fulfillment of a public records request is provided "as is" without warranty of any kind, and the COUNTY expressly disclaims all express and implied warranties, including but not limited to the implied warranties of merchantability and fitness for a particular purpose. The COUNTY does not warrant, guarantee, or make any representations regarding the use, or the results of the use, of the information provided to you by the COUNTY in terms of correctness, accuracy, reliability, timeliness or otherwise. The entire risk as to the results and performance of any information obtained from the COUNTY is entirely assumed by the recipient."
 "Please contact the responsible Martin County Department for specific determinations."

Palm Beach County

Marina / Boat Ramp Name							
1 SUNDANCE MARINA	10 NORTHSIDE MARINE SERVICES	19 MONTEREY MOTEL AND MARINA	28 A&J BOATWORKS	36 BROWARD STREET RAMP	44 AMERICAN CUSTOM YACHTS	52 THE ALLIED MARINE GROUP	61 PENDARVIS COVE PARK
2 ANCHOR'S AWEIGH MARINA	11 WATERSIDE PLACE DOCKS	20 STELLA MARINE	29 MANATEE MARINA	37 MARRIOTT MARINA	45 JIMMY GRAHAM PARK RAMP	53 STUART HARBOR DOCKAGE	62 SEAGATE HARBOR/ LIGHHOUSE POINT
3 OUTRIGGER HARBOR MARINA	12 SOUTHPORT ANCHORAGE	21 RIVERWATCH MARINA	30 MAR-TECH YACHT FITTERS	38 JUPITER HILLS LIGHTHOUSE MARINA	46 PILOTS COVE DOCKS	54 SEAGREEN MARINA	63 FOX RUN BOAT RAMP
4 STEVE LAZARUS YACHTS	13 TREASURE COAST BOATING	22 SAILFISH MARINA	31 LOBLOLLY BAY MARINA	39 PELICAN BAY YACHT CLUB	47 MARINA BAY DOCKS	55 BEACH WATER SPORTS	64 OAK RIDGE BOAT RAMP
5 PELICAN'S NEST MARINA	14 FREEDOM MARINE	23 FINEST KIND MARINA	32 JENSEN BEACH CAUSEWAY PARK RAMP	40 BLOWING ROCKS MARINA	48 JUPITER ISLAND CLUB MARINA	56 LEIGHTON PARK RAMP	
6 ST LUCIE MARINE	15 SAILFISH POINT MARINA	24 MARINER CAY MARINA	33 NEW WAVE RUNNERS	41 SEAGATE MARINA	49 JOHNATHAN DICKINSON STATE PARK BOAT RAMP	57 SANDSPRIT PARK RAMP	
7 NORTHSIDE MARINA	16 MARTIN COUNTY MARINE	25 CHAPMAN SCHOOL	34 OUTBOARD MARINE CORP	42 STUART YACHT BUILDERS	50 STUART YACHT SALES	58 PHIPPS PARK RAMP	
8 STUART CAUSEWAY PARK RAMP	17 BASSETT BOATS	26 HINCKLEY BOATYARD	35 SHEPARD PARK RAMP	43 LOST RIVER MARINE	51 STEVE LAZARUS YACHT SALES	59 INDIANTOWN MARINA	Locations preceded with a "P" indicate potential marina sites
9 HARBOR INN DOCKS	18 WHITTICAR BOAT WORKS	27 PIRATES COVE MARINA				60 TIMER POWER RAMP	