

Generalized Inundation

R1911 Resiliency Planning Grant

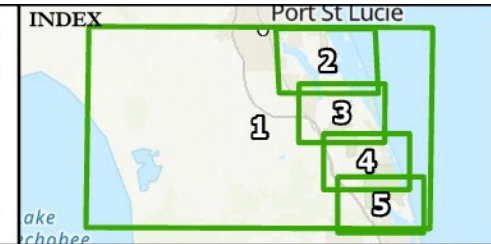
Martin County, Florida



AClark 06/09/2020 Z:/1836B



Projection: NOAA High
Year: 2100
Water Rise (Inches): Approx. 103 + Surge
Scenario: 100 Year Surge
Page: 1 of 5



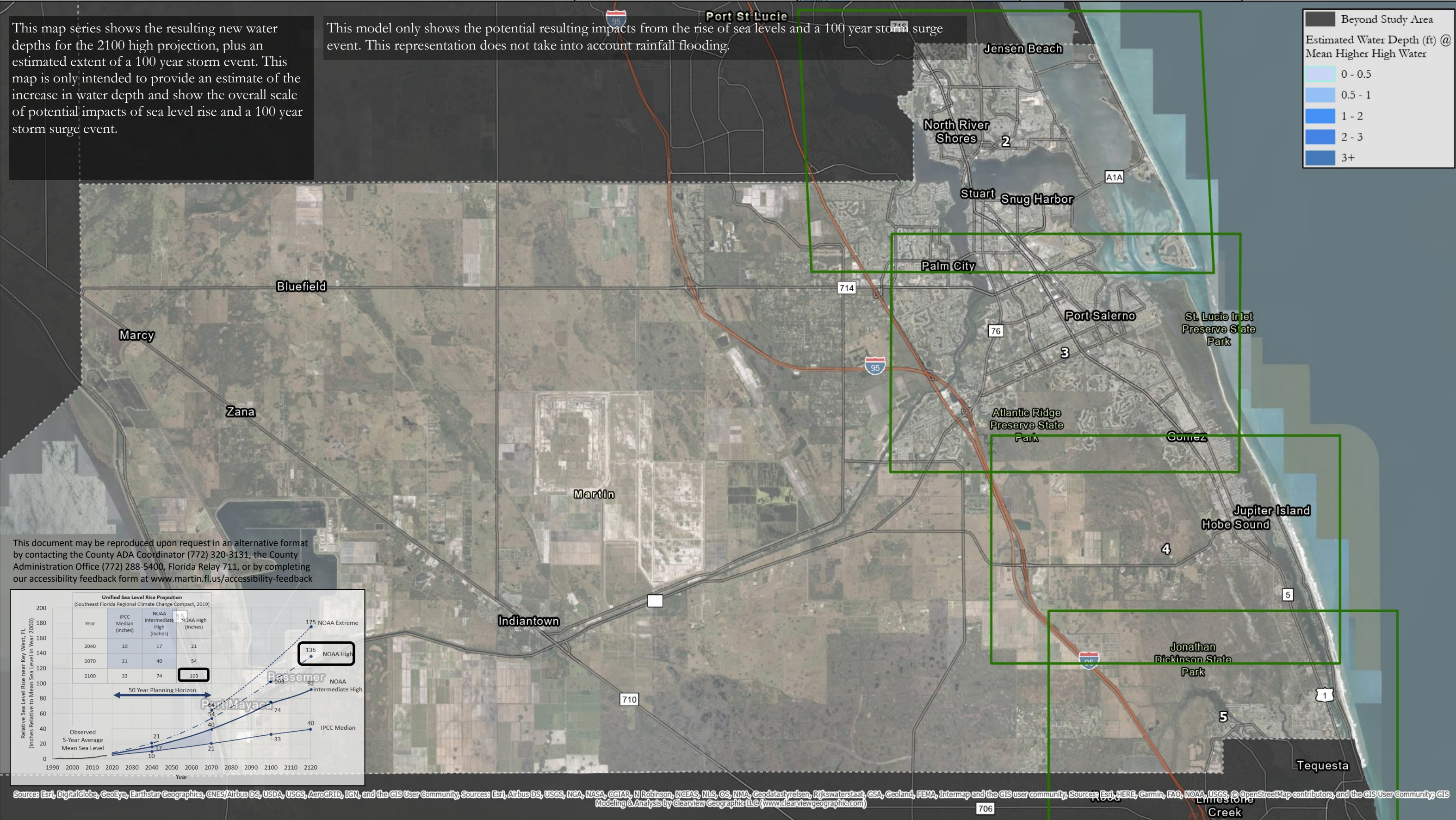
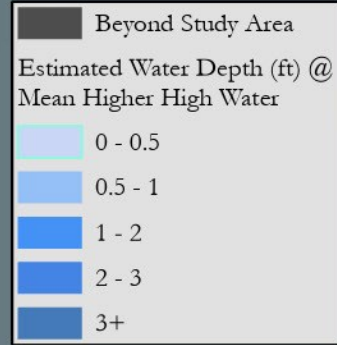
PROJECT PARTNERS



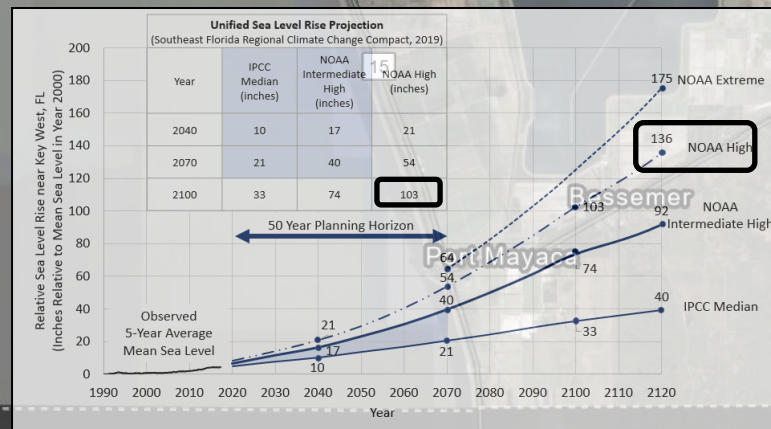
Environmental & Technical Systems
 344 S. Woodland Blvd.
 DeLand, Florida 32720
 (386) 957-2314
 www.clearviewgeographic.com

This map series shows the resulting new water depths for the 2100 high projection, plus an estimated extent of a 100 year storm event. This map is only intended to provide an estimate of the increase in water depth and show the overall scale of potential impacts of sea level rise and a 100 year storm surge event.

This model only shows the potential resulting impacts from the rise of sea levels and a 100 year storm surge event. This representation does not take into account rainfall flooding.



This document may be reproduced upon request in an alternative format by contacting the County ADA Coordinator (772) 320-3131, the County Administration Office (772) 288-5400, Florida Relay 711, or by completing our accessibility feedback form at www.martin.fl.us/accessibility-feedback



Source: Esri, DigitalGlobe, GeoEye, Earthstar Geographics, CNES/Airbus DS, USDA, USGS, AeroGRID, IGN, and the GIS User Community, Sources: Esri, HERE, Garmin, FAO, NOAA, USGS, © OpenStreetMap contributors, and the GIS User Community, GIS Modeling & Analysis by Clearview Geographic LLC (www.clearviewgeographic.com)

Generalized Inundation

R1911 Resiliency Planning Grant

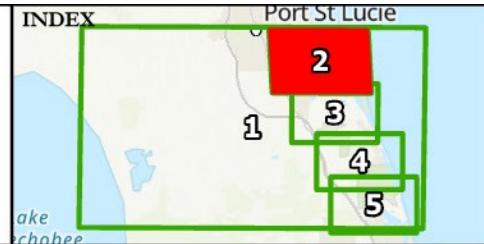
Martin County, Florida



AClark 06/09/2020 Z:/1836B



Projection: NOAA High
 Year: 2100
 Water Rise (Inches): Approx. 103 + Surge
 Scenario: 100 Year Surge
 Page: 2 of 5



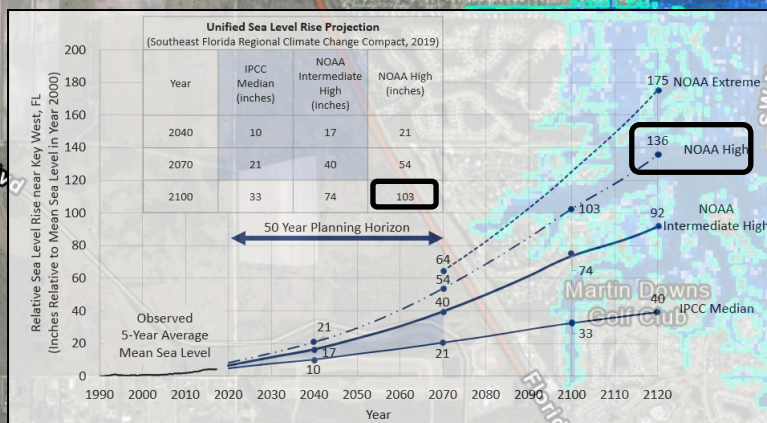
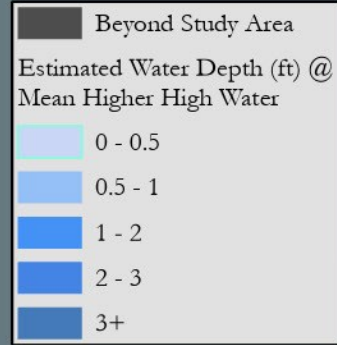
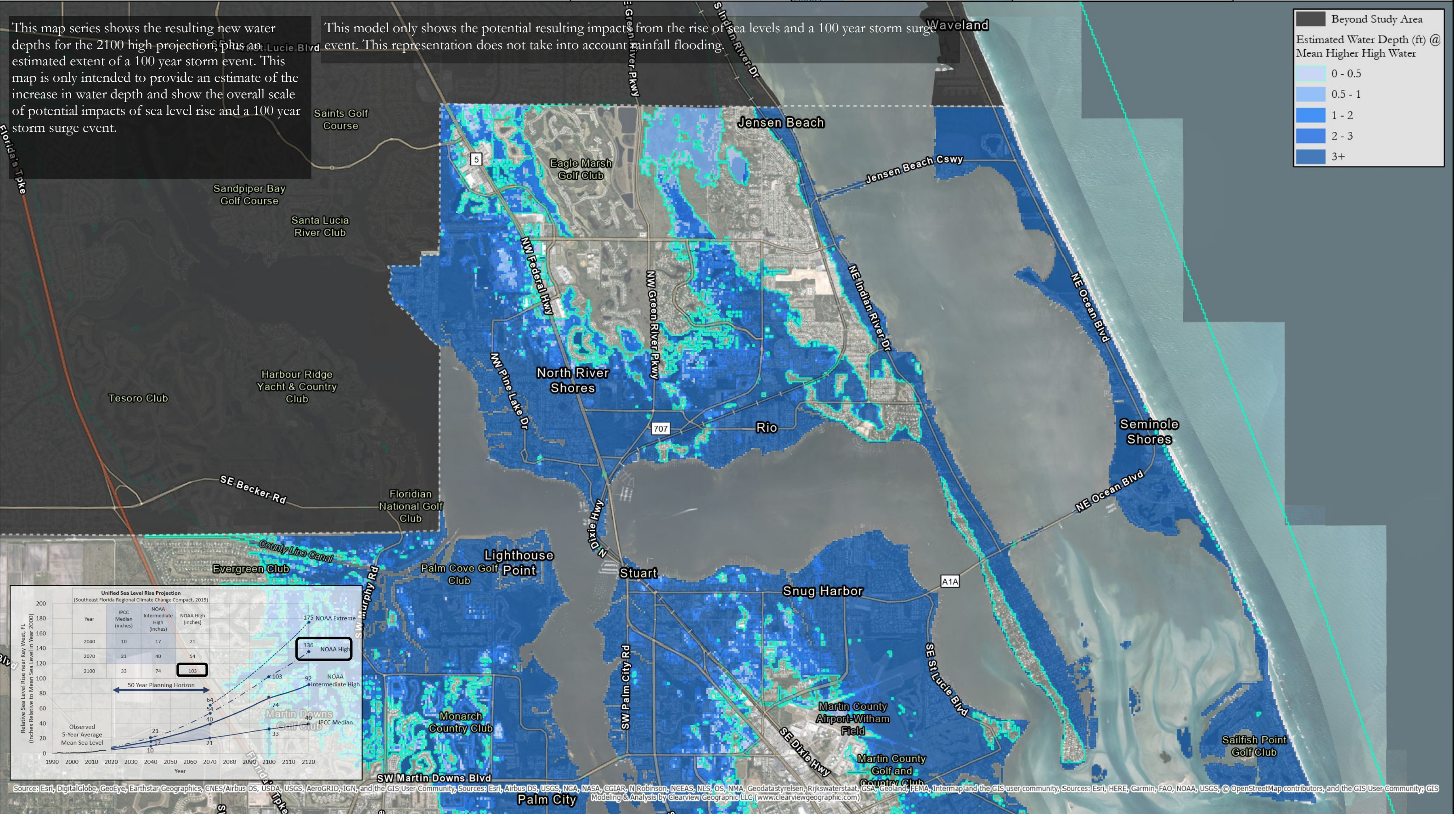
PROJECT PARTNERS



Environmental & Technical Systems
 344 S. Woodland Blvd.
 DeLand, Florida 32720
 (386) 957-2314
 www.clearviewgeographic.com

This map series shows the resulting new water depths for the 2100 high projection, plus an estimated extent of a 100 year storm event. This map is only intended to provide an estimate of the increase in water depth and show the overall scale of potential impacts of sea level rise and a 100 year storm surge event.

This model only shows the potential resulting impact from the rise of sea levels and a 100 year storm surge event. This representation does not take into account rainfall flooding.



This map series was designed for a 11 (h) x 17 (w) paper. Pages or page areas with minimal elements in the legend may have gaps in available GIS data. Additional data collection and verification is recommended. GIS data and its associated representation is provided as-is.

Generalized Inundation

R1911 Resiliency Planning Grant

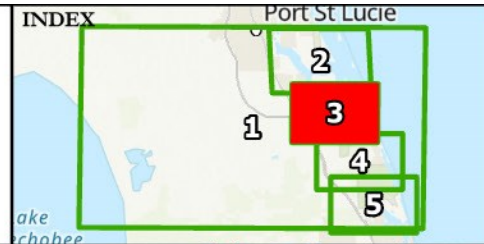
Martin County, Florida



AClark 06/09/2020 Z:/1836B



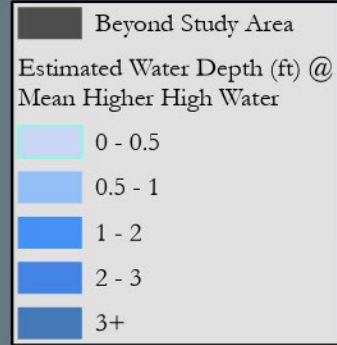
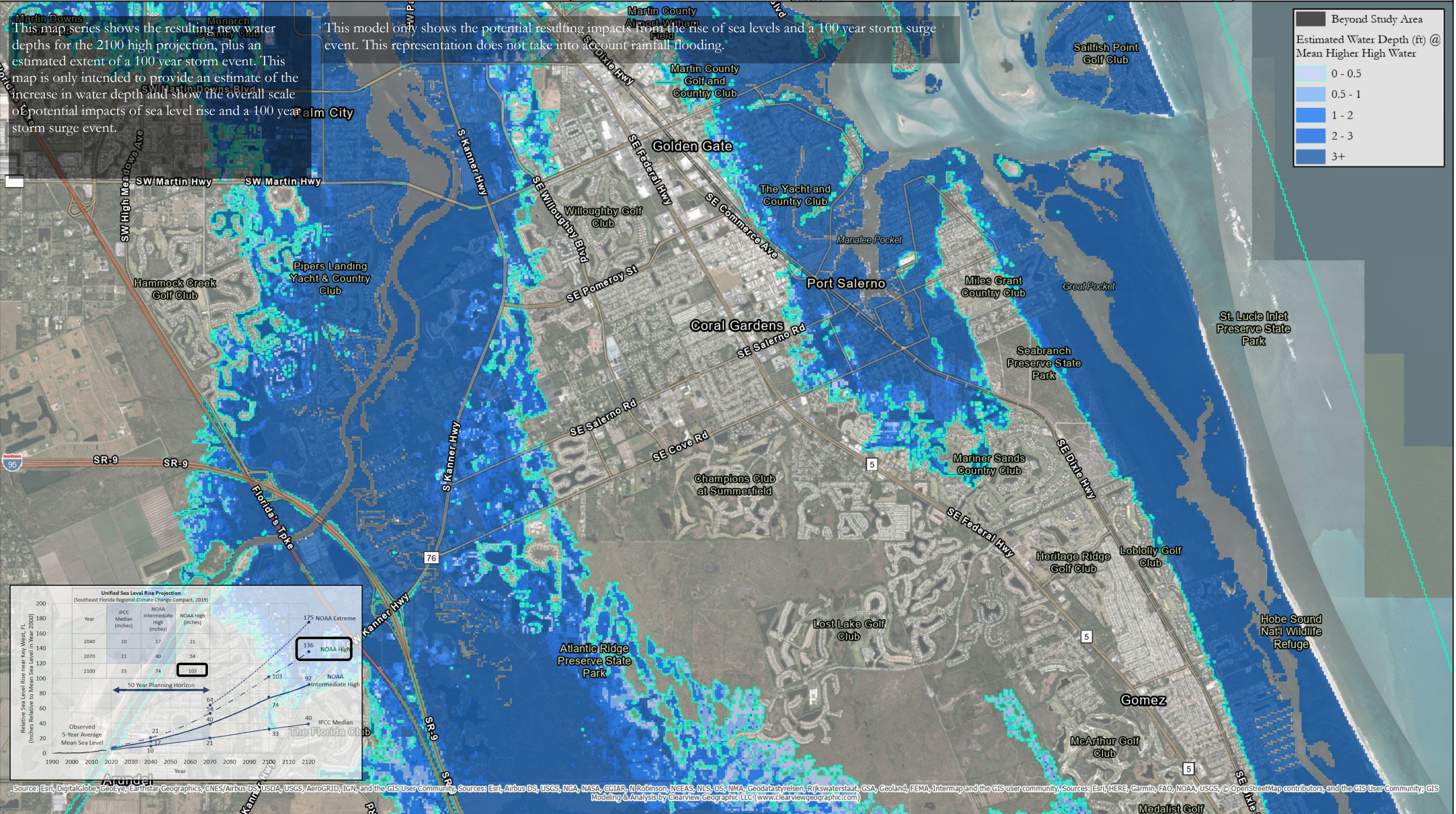
Projection: NOAA High
 Year: 2100
 Water Rise (Inches): Approx. 103 + Surge
 Scenario: 100 Year Surge
 Page: 3 of 5



PROJECT PARTNERS

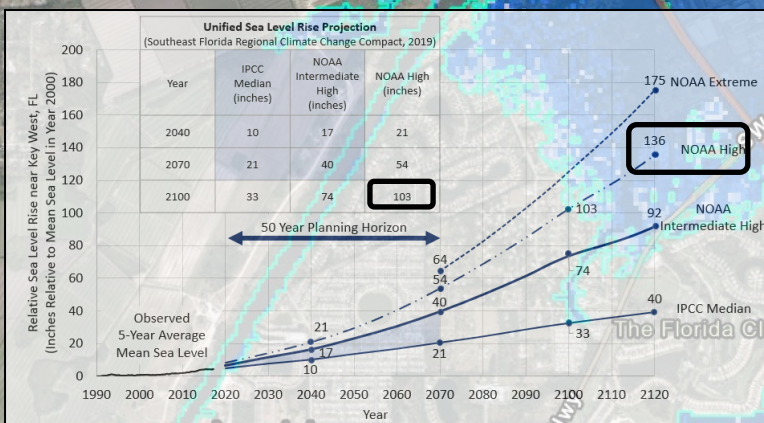


Environmental & Technical Systems
 344 S. Woodland Blvd.
 DeLand, Florida 32720
 (386) 957-2314
 www.clearviewgeographic.com



This map series shows the resulting new water depths for the 2100 high projection, plus an estimated extent of a 100 year storm event. This map is only intended to provide an estimate of the increase in water depth and show the overall scale of potential impacts of sea level rise and a 100 year storm surge event.

This model only shows the potential resulting impacts from the rise of sea levels and a 100 year storm surge event. This representation does not take into account rainfall flooding.



Source: Esri, DigitalGlobe, GeoEye, Earthstar Geographics, CNES/Airbus DS, USDA, USGS, AeroGRID, IGN, and the GIS User Community. Sources: Esri, Airbus DS, USGS, NGA, NASA, CGIAR, N Robinson, NGEAS, NLS, OS, NMA, Geodatastyrelsen, Rijkswaterstaat, GSA, Geoland, FEMA, Intermap and the GIS user community. Sources: Esri, HERE, Garmin, FAO, NOAA, USGS, © OpenStreetMap contributors, and the GIS User Community; GIS Modeling & Analysis by Clearview Geographic LLC (www.clearviewgeographic.com)

Generalized Inundation

R1911 Resiliency Planning Grant

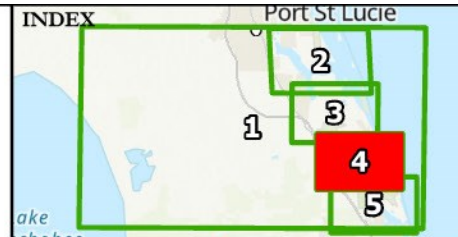
Martin County, Florida



AClark 06/09/2020 Z:/1836B



Projection: NOAA High
 Year: 2100
 Water Rise (Inches): Approx. 103 + Surge
 Scenario: 100 Year Surge
 Page: 4 of 5



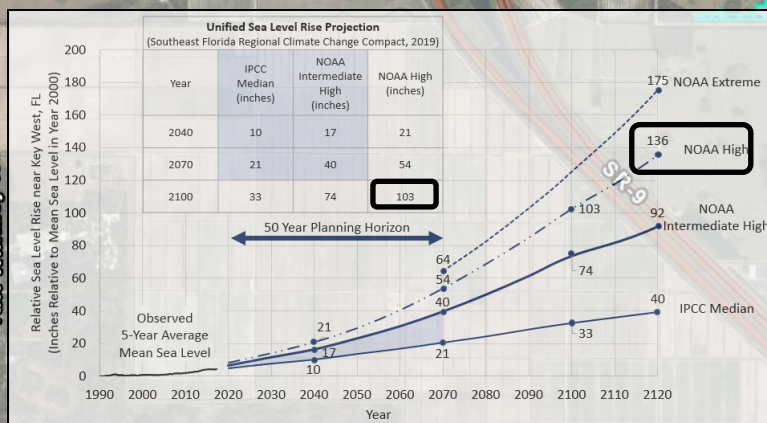
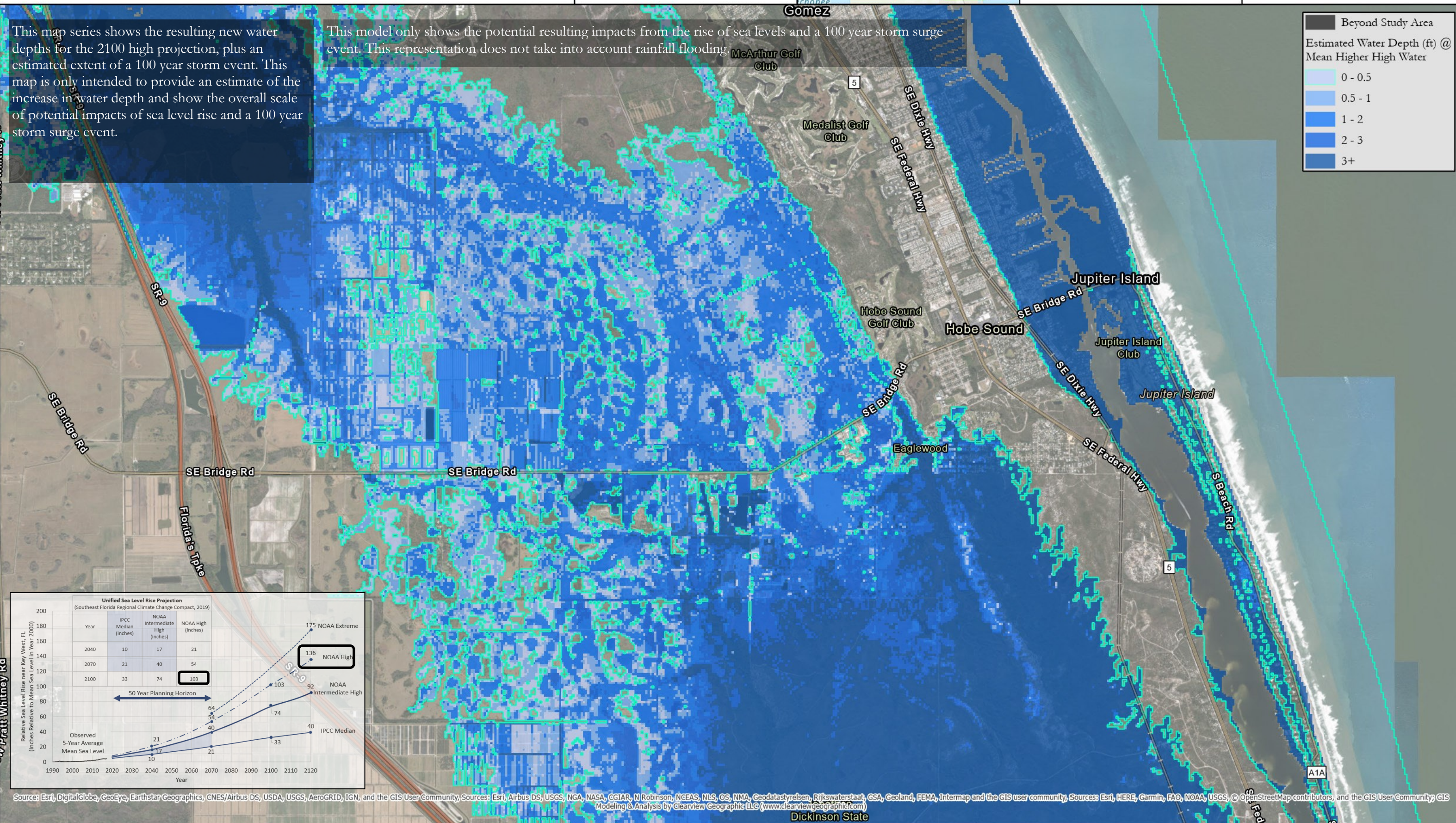
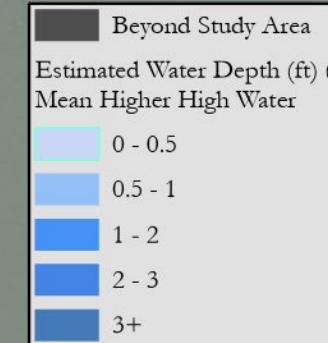
PROJECT PARTNERS



Environmental & Technical Systems
 344 S. Woodland Blvd.
 DeLand, Florida 32720
 (386) 957-2314
 www.clearviewgeographic.com

This map series shows the resulting new water depths for the 2100 high projection, plus an estimated extent of a 100 year storm event. This map is only intended to provide an estimate of the increase in water depth and show the overall scale of potential impacts of sea level rise and a 100 year storm surge event.

This model only shows the potential resulting impacts from the rise of sea levels and a 100 year storm surge event. This representation does not take into account rainfall flooding.



Source: Esri, DigitalGlobe, GeoEye, Earthstar Geographics, CNES/Airbus DS, USDA, USGS, AeroGRID, IGN, and the GIS User Community, Sources: Esri, Airbus DS, USGS, NGA, NASA, CGIAR, N Robinson, NGEAS, NLS, OS, NMA, Geodatastyrelsen, Rijkswaterstaat, GSA, Geoland, FEMA, Intermap and the GIS user community, Sources: Esri, HERE, Garmin, FAO, NOAA, USGS, © OpenStreetMap contributors, and the GIS User Community; GIS Modeling & Analysis by Clearview Geographic LLC (www.clearviewgeographic.com)

Generalized Inundation

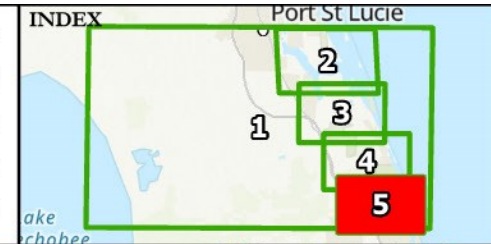
R1911 Resiliency Planning Grant Martin County, Florida



Clark 06/09/2020 Z:/1836B



Projection: NOAA High
Year: 2100
Water Rise (Inches): Approx. 103 + Surge
Scenario: 100 Year Surge
Page: 5 of 5



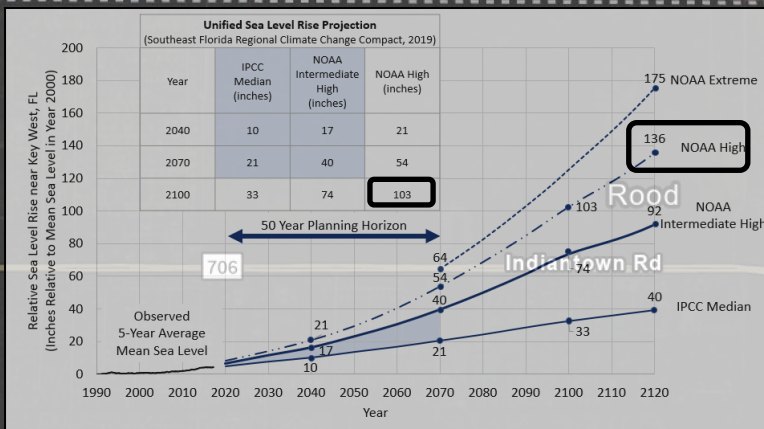
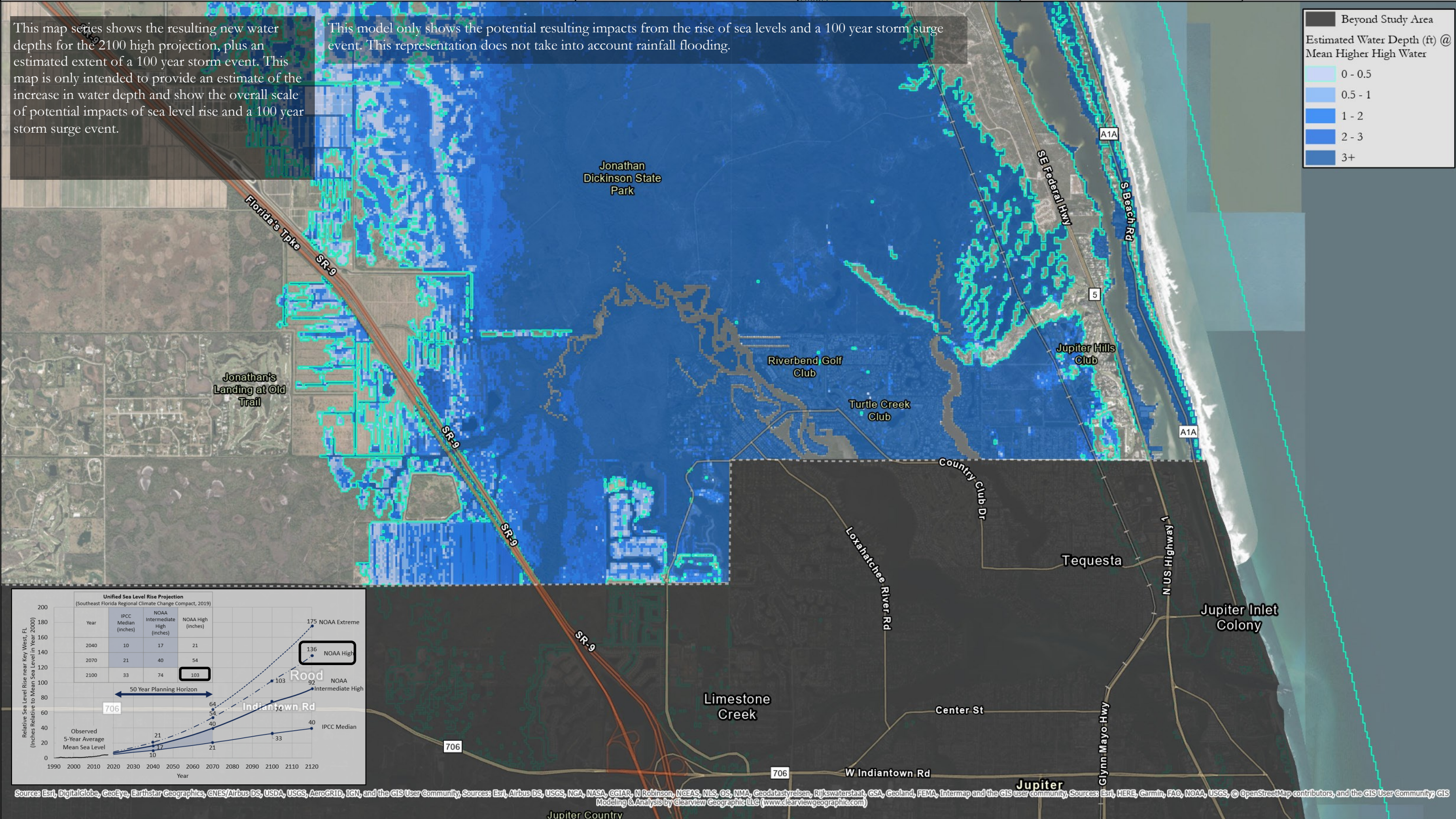
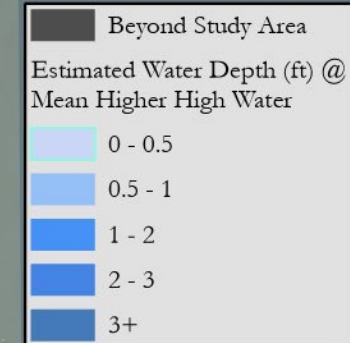
PROJECT PARTNERS



Environmental & Technical Systems
344 S. Woodland Blvd.
DeLand, Florida 32720
(386) 957-2314
www.clearviewgeographic.com

This map series shows the resulting new water depths for the 2100 high projection, plus an estimated extent of a 100 year storm event. This map is only intended to provide an estimate of the increase in water depth and show the overall scale of potential impacts of sea level rise and a 100 year storm surge event.

This model only shows the potential resulting impacts from the rise of sea levels and a 100 year storm surge event. This representation does not take into account rainfall flooding.



Source: Esri, DigitalGlobe, GeoEye, Earthstar Geographics, CNES/Airbus DS, USDA, USGS, AeroGRID, IGN, and the GIS User Community, Sources: Esri, Airbus DS, USGS, NGA, NASA, CGIAR, N Robinson, NCEAS, NLS, OS, NMA, Geodatastyrelsen, Rijkswaterstaat, GSA, Geoland, FEMA, Intermap and the GIS user community, Sources: Esri, HERE, Garmin, FAO, NOAA, USGS, © OpenStreetMap contributors, and the GIS User Community; GIS Modeling & Analysis by Clearview Geographic LLC (www.clearviewgeographic.com)

Sea Level Rise Projection & FEMA Flood Plain

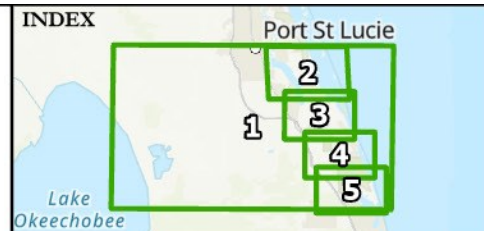
R1911 Resiliency Planning Grant
Martin County, Florida



AClark 06/09/2020 Z:/1836B



Projection: NOAA High
Year: 2100
Water Rise (Inches): Approx. 103 + Surge
Scenario: 100 Year Storm Surge
Page: 1 of 5



PROJECT PARTNERS

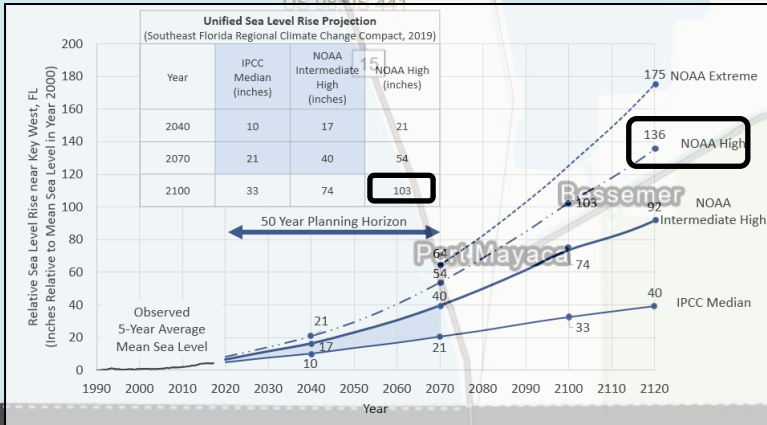
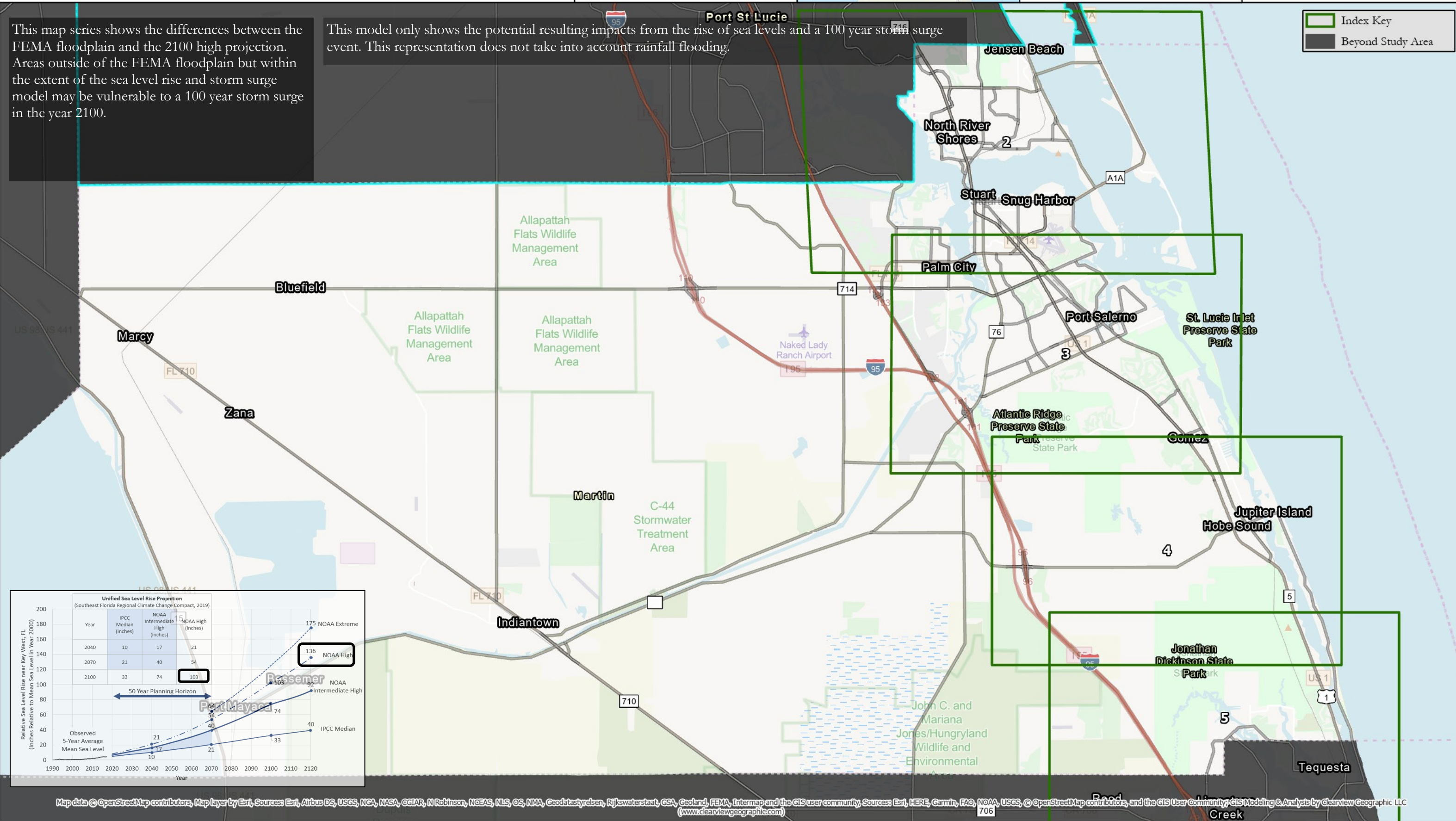


Environmental & Technical Systems
344 S. Woodland Blvd.
DeLand, Florida 32720
(386) 957-2314
www.clearviewgeographic.com

This map series shows the differences between the FEMA floodplain and the 2100 high projection. Areas outside of the FEMA floodplain but within the extent of the sea level rise and storm surge model may be vulnerable to a 100 year storm surge in the year 2100.

This model only shows the potential resulting impacts from the rise of sea levels and a 100 year storm surge event. This representation does not take into account rainfall flooding.

Index Key
Beyond Study Area



Sea Level Rise Projection & FEMA Flood Plain

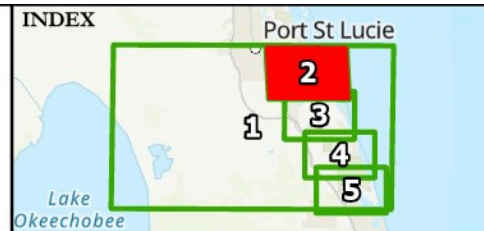
R1911 Resiliency Planning Grant
Martin County, Florida



AClark 06/09/2020 Z:/1836B



Projection: NOAA High
Year: 2100
Water Rise (Inches): Approx. 103 + Surge
Scenario: 100 Year Storm Surge
Page: 2 of 5



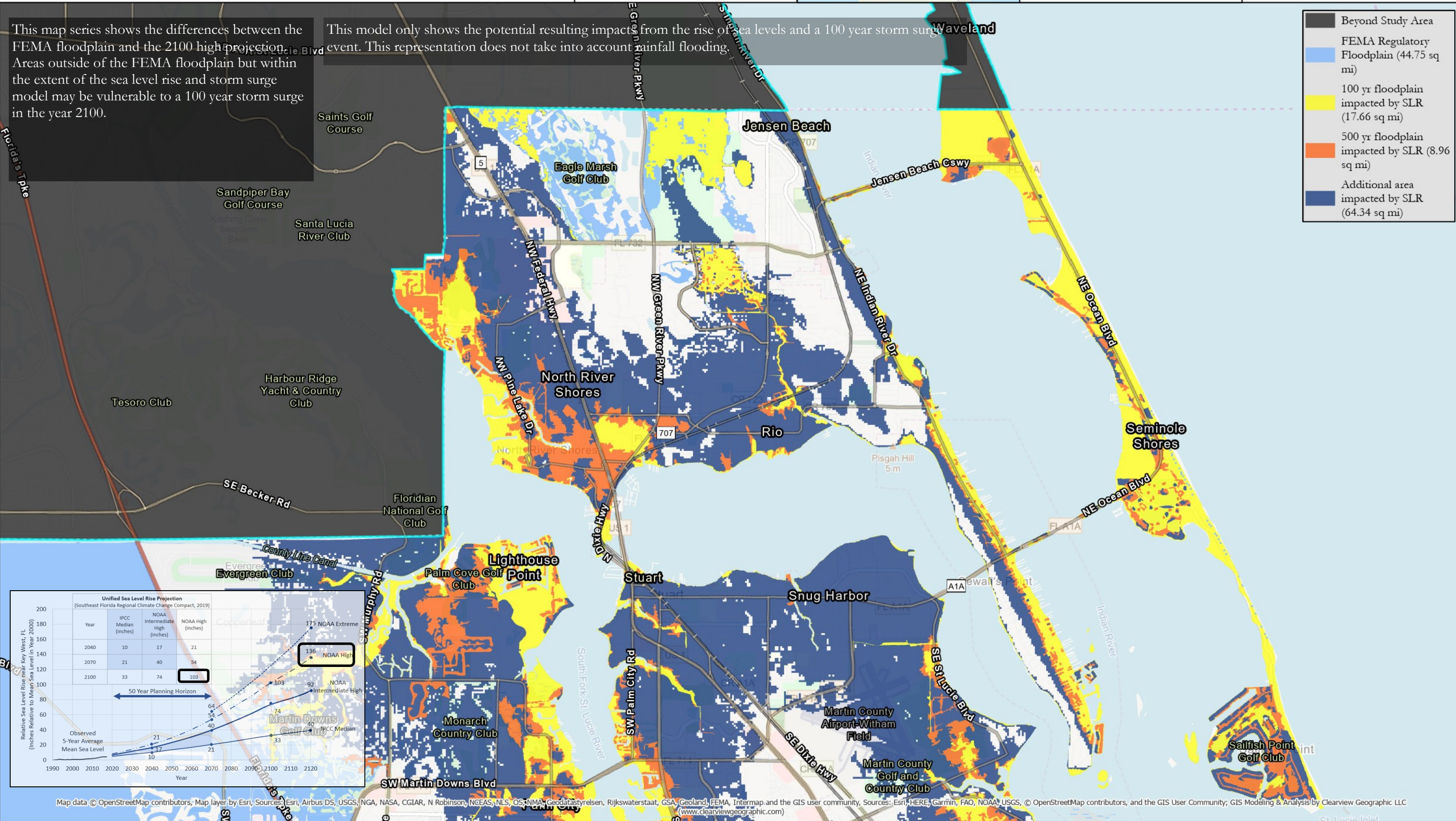
PROJECT PARTNERS



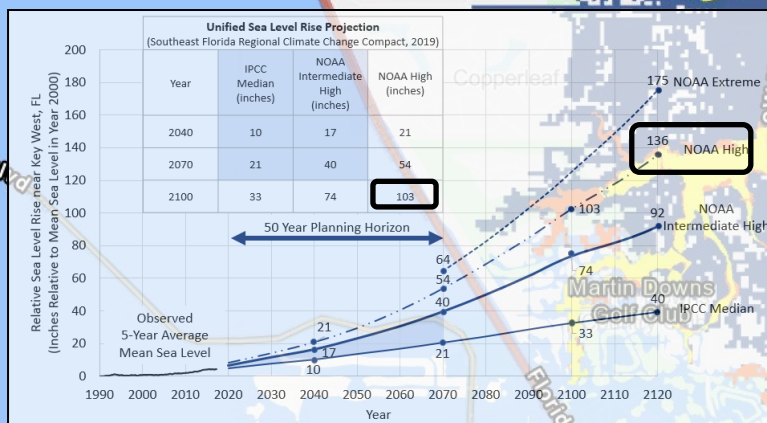
Environmental & Technical Systems
344 S. Woodland Blvd.
DeLand, Florida 32720
(386) 957-2314
www.clearviewgeographic.com

This map series shows the differences between the FEMA floodplain and the 2100 high projection. Areas outside of the FEMA floodplain but within the extent of the sea level rise and storm surge model may be vulnerable to a 100 year storm surge in the year 2100.

This model only shows the potential resulting impacts from the rise of sea levels and a 100 year storm surge event. This representation does not take into account rainfall flooding.



- Beyond Study Area
- FEMA Regulatory Floodplain (44.75 sq mi)
- 100 yr floodplain impacted by SLR (17.66 sq mi)
- 500 yr floodplain impacted by SLR (8.96 sq mi)
- Additional area impacted by SLR (64.34 sq mi)



Sea Level Rise Projection & FEMA Flood Plain

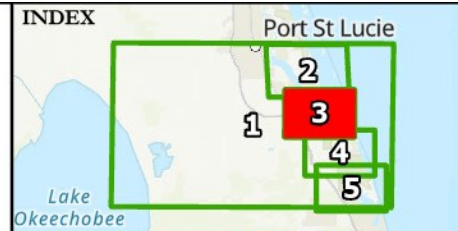
R1911 Resiliency Planning Grant
Martin County, Florida



AClark 06/09/2020 Z:/1836B



Projection: NOAA High
Year: 2100
Water Rise (Inches): Approx. 103 + Surge
Scenario: 100 Year Storm Surge
Page: 3 of 5



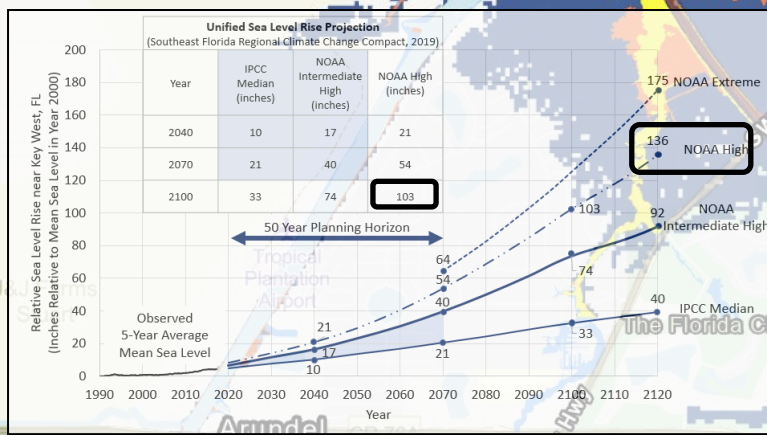
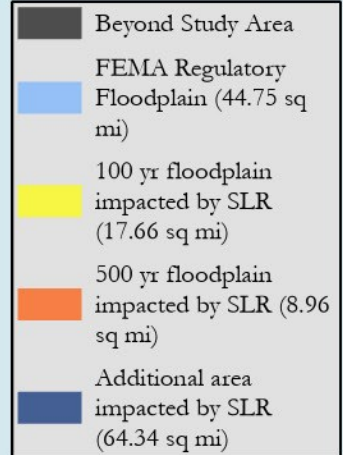
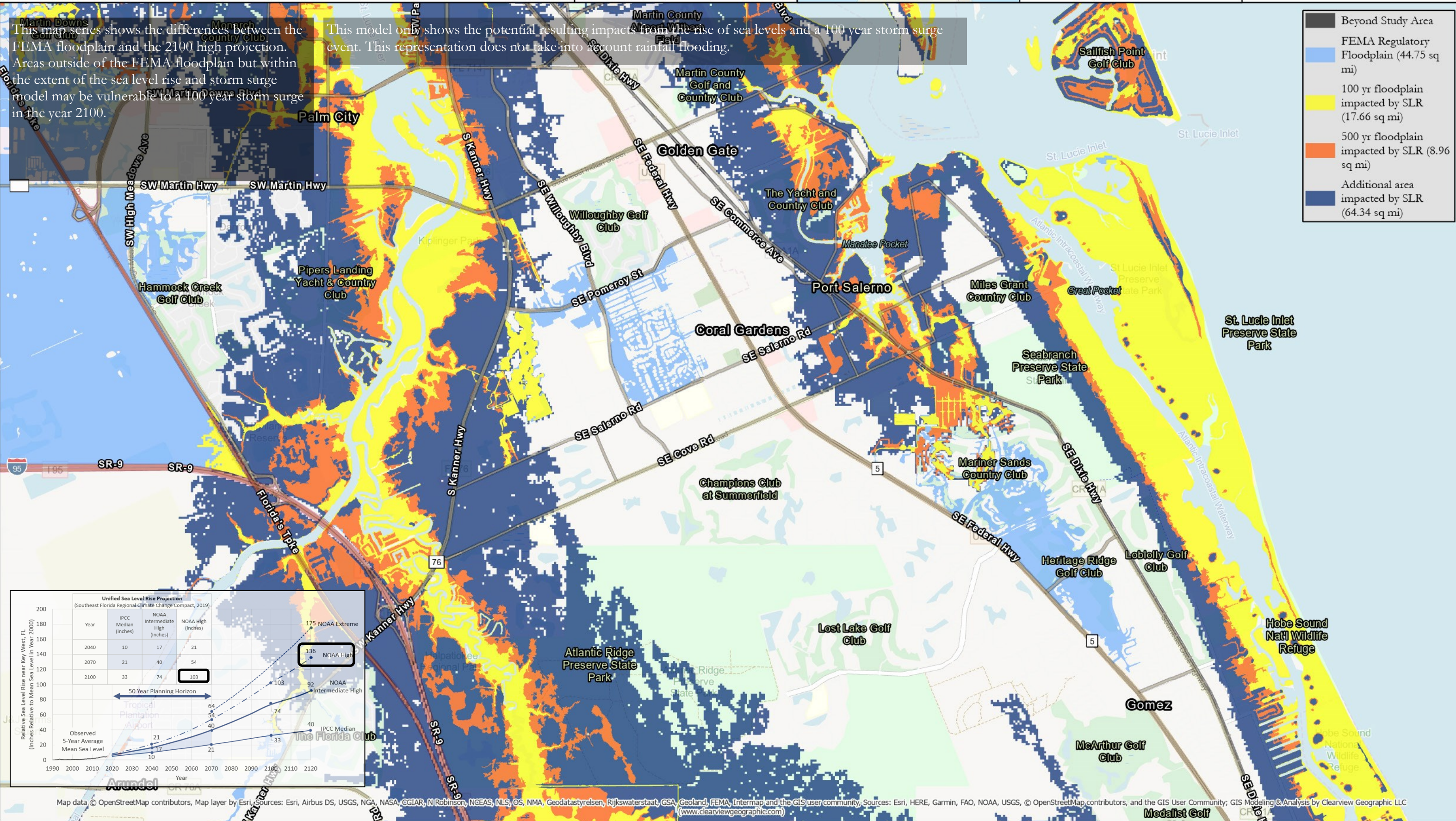
PROJECT PARTNERS



Environmental & Technical Systems
344 S. Woodland Blvd.
DeLand, Florida 32720
(386) 957-2314
www.clearviewgeographic.com

This map series shows the differences between the FEMA floodplain and the 2100 high projection. Areas outside of the FEMA floodplain but within the extent of the sea level rise and storm surge model may be vulnerable to a 100 year storm surge in the year 2100.

This model only shows the potential resulting impacts from the rise of sea levels and a 100 year storm surge event. This representation does not take into account rainfall flooding.



Sea Level Rise Projection & FEMA Flood Plain

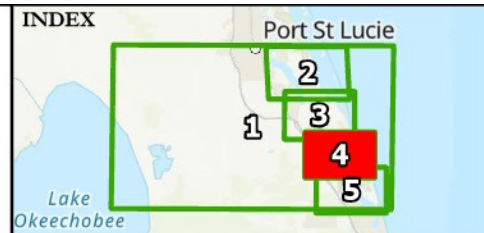
R1911 Resiliency Planning Grant
Martin County, Florida



AClark 06/09/2020 Z:/1836B



Projection: NOAA High
Year: 2100
Water Rise (Inches): Approx. 103 + Surge
Scenario: 100 Year Storm Surge
Page: 4 of 5



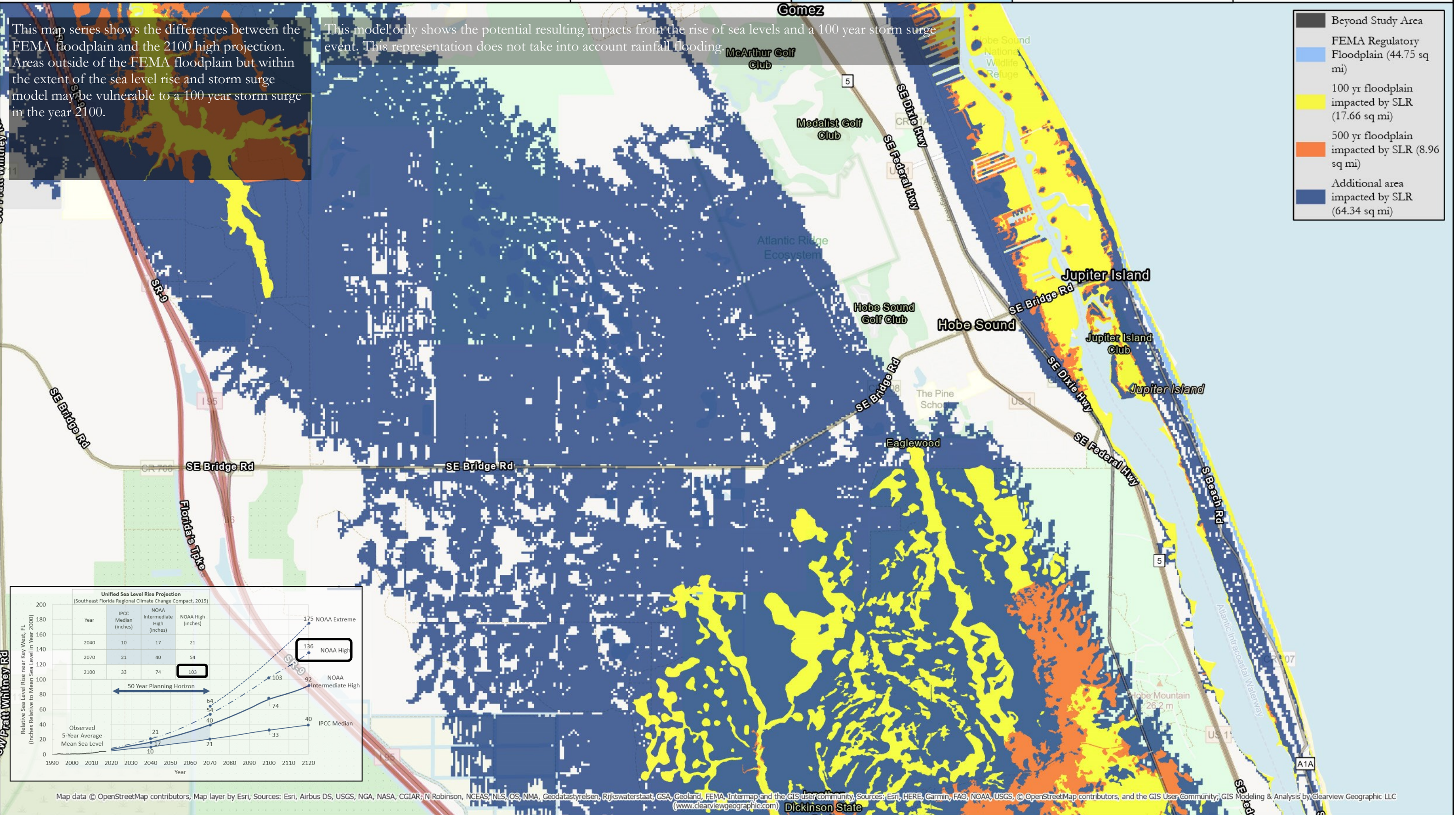
PROJECT PARTNERS



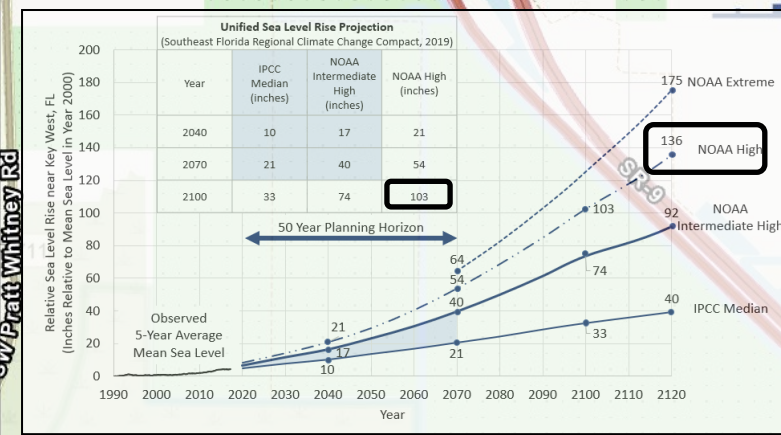
Environmental & Technical Systems
344 S. Woodland Blvd.
DeLand, Florida 32720
(386) 957-2314
www.clearviewgeographic.com

This map series shows the differences between the FEMA floodplain and the 2100 high projection. Areas outside of the FEMA floodplain but within the extent of the sea level rise and storm surge model may be vulnerable to a 100 year storm surge in the year 2100.

This model only shows the potential resulting impacts from the rise of sea levels and a 100 year storm surge event. This representation does not take into account rainfall flooding.



- Beyond Study Area
- FEMA Regulatory Floodplain (44.75 sq mi)
- 100 yr floodplain impacted by SLR (17.66 sq mi)
- 500 yr floodplain impacted by SLR (8.96 sq mi)
- Additional area impacted by SLR (64.34 sq mi)



Map data © OpenStreetMap contributors, Map layer by Esri, Sources: Esri, Airbus DS, USGS, NGA, NASA, CGIAR, N Robinson, NCEAS, NLS, OS, NMA, Geodatastyrelsen, Rijkswaterstaat, GSA, Geoland, FEMA, Intermap and the GIS User community, Sources: Esri, HERE, Garmin, FAO, NOAA, USGS, © OpenStreetMap contributors, and the GIS User Community; GIS Modeling & Analysis by Clearview Geographic LLC
Dickinson State

Sea Level Rise Projection & FEMA Flood Plain

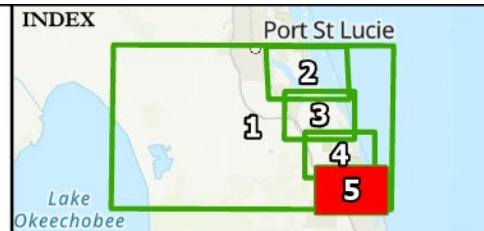
R1911 Resiliency Planning Grant
Martin County, Florida



Clark 06/09/2020 Z:/1836B



Projection: NOAA High
Year: 2100
Water Rise (Inches): Approx. 103 + Surge
Scenario: 100 Year Storm Surge
Page: 5 of 5



PROJECT PARTNERS

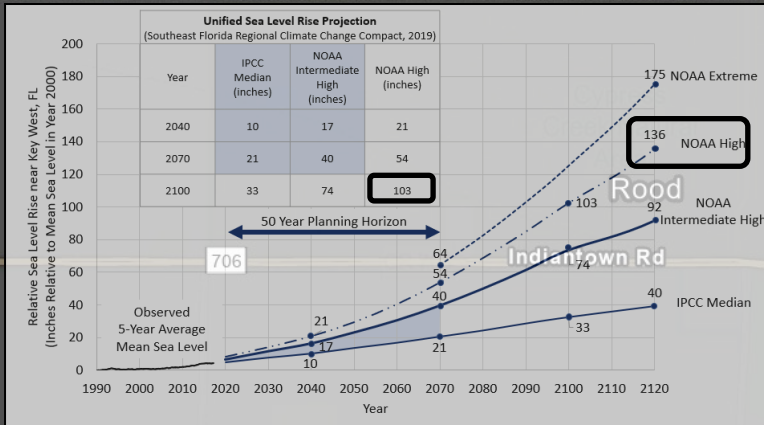
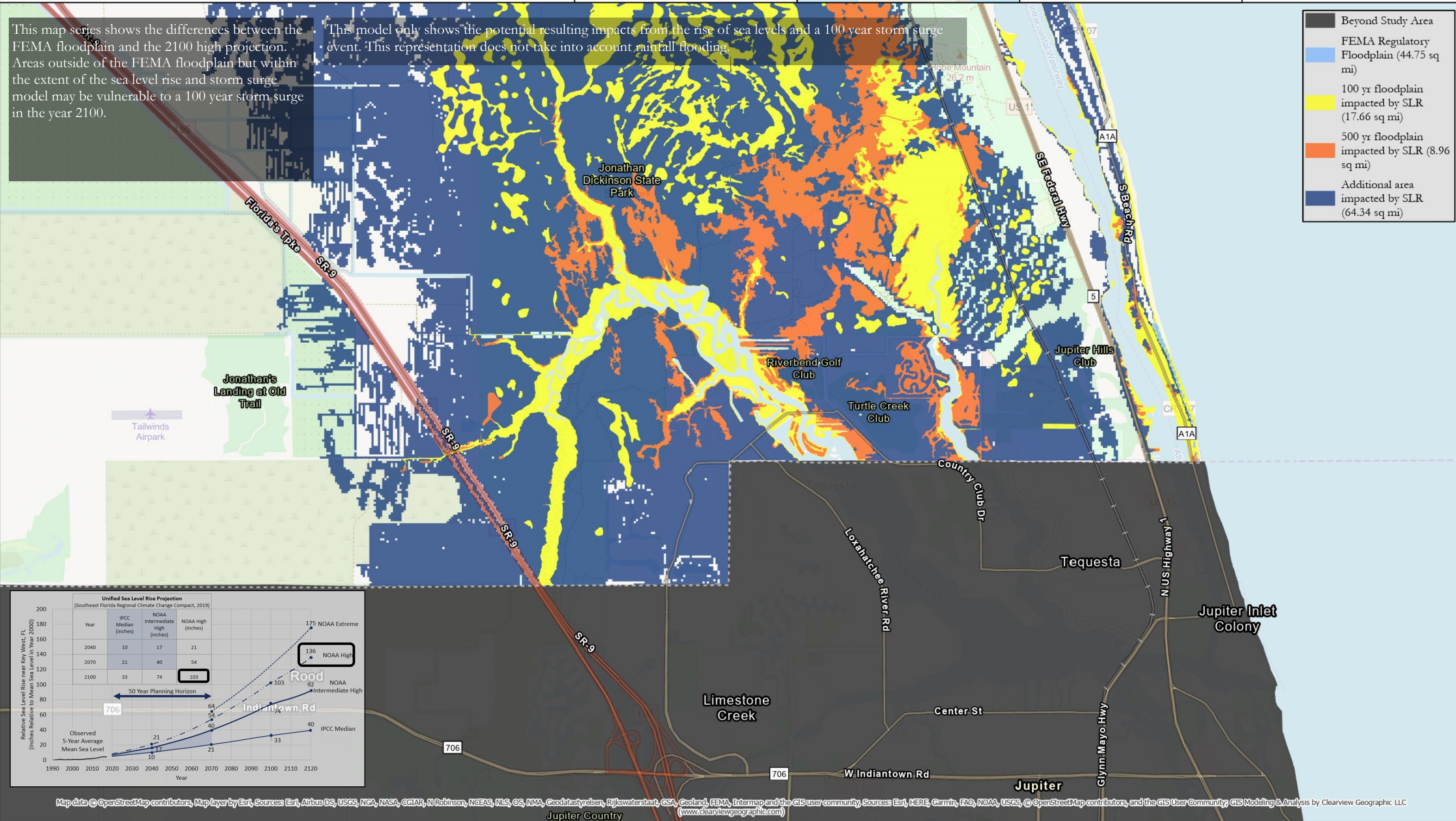


Environmental & Technical Systems
344 S. Woodland Blvd.
DeLand, Florida 32720
(386) 957-2314
www.clearviewgeographic.com

This map series shows the differences between the FEMA floodplain and the 2100 high projection. Areas outside of the FEMA floodplain but within the extent of the sea level rise and storm surge model may be vulnerable to a 100 year storm surge in the year 2100.

This model only shows the potential resulting impacts from the rise of sea levels and a 100 year storm surge event. This representation does not take into account rainfall flooding.

- Beyond Study Area
- FEMA Regulatory Floodplain (44.75 sq mi)
- 100 yr floodplain impacted by SLR (17.66 sq mi)
- 500 yr floodplain impacted by SLR (8.96 sq mi)
- Additional area impacted by SLR (64.34 sq mi)



Map data © OpenStreetMap contributors, Map layer by Esri, Sources: Esri, Airbus DS, USGS, NGA, NASA, CGIAR, N Robinson, NCEAS, NLS, OS, NMA, Geodatastyrelsen, Rijkswaterstaat, CSA, Geoland, FEMA, Intermap and the GIS user community, Sources: Esri, HERE, Garmin, FAO, NOAA, USGS, © OpenStreetMap contributors, and the GIS User Community; GIS Modeling & Analysis by Clearview Geographic LLC