

Public Facilities Analysis

Martin County Board of County Commissioners



Approved February 13, 2018

The Martin County Comprehensive Growth Management Plan (CGMP) requires an analysis of public facilities in the consideration of any plan amendment proposal to amend either the primary or secondary urban service district boundaries. Policy 4.7A.6 of the Future Land Use Element states:

Policy 4.7A.6. Any proposed amendment to either the Primary Urban Service District or the Secondary Urban Service District boundaries shall be considered only after the regular update to the Residential Capacity Analysis and an analysis that public facilities are available to fully serve land in the two existing urban service districts as well as any potential expansion of an urban service district. The Board of County Commissioners must adopt both studies before applications for amendments to the Primary or Secondary Urban Service Districts can be determined complete.

This analysis describes the public facilities available to serve the County's urban service districts. It is based on source data from the Engineering, Fire Rescue, Libraries, Parks, and Utilities Departments. Source data from the Martin County School District is also included. The report covers roads, potable water services, sanitary sewer services, solid waste management, stormwater management, parks, fire rescue, schools, beaches and libraries. Some facilities are analyzed using the levels of service in the Capital Improvements Element (CIE) of the CGMP in Policies 14.1A.2 and Policy 14.1A.4. The annual Level of Service Analyses used in the Capital Improvement Plan (CIP) are provided. Others, such as potable water and sanitary sewer services, use projected demand and supply calculations from the respective Master Plans.

The analysis described above is not the same as a generalized facility analysis done as part of any amendment to the Future Land Use Map (FLUM). The CGMP requires a generalized facility analysis of public facilities as part of any amendment to the FLUM. That is a separate analysis from the public facility analysis that is required for the expansion of Urban Service Districts. Policy 4.1B.2, cited below, requires the generalized analysis as part of the FLUM amendment process.

Policy 4.1B.2. Analysis of availability of public facilities. All requests for amendments to the FLUMs shall include a general analysis of (1) the availability and adequacy of public facilities and (2) the level of services required for public facilities in the proposed land uses. This analysis shall address, at a minimum, the availability of category A and category C service facilities as defined in the Capital Improvements Element. No amendment shall be approved unless present or planned public facilities and services will be capable of meeting the adopted LOS standards of this Plan for the proposed land uses. The Capital Improvements Element or other relevant plan provisions and the FLUMs may be amended concurrently to satisfy this criterion. The intent of this provision is to ensure that the elements of the CGMP remain internally consistent.

Compliance with this provision is in addition to, not in lieu of, compliance with the provisions of Martin County's Concurrency Management System. When a map amendment is granted under this provision, it does not confer any vested rights and will not stop the County from denying subsequent requests for development orders

based on the application of a concurrency review at the time such orders are sought.

Martin County may adopt sub-area development restrictions for a particular site where public facilities and services, such as arterial and collector roads, regional water supply, regional wastewater treatment/disposal, surface water management, solid waste collection/disposal, parks and recreational facilities, and schools, are constrained and incapable of meeting the needs of the site if developed to the fullest capacity allowed under Goal 4.13 of this Growth Management Plan. The master or final site plan for a site that is subject to such sub-area development restrictions shall specify the maximum amount and type of development allowed.

The concurrency analysis used for site development is different than the two analyses described above. The CGMP goals, objectives and policies that require concurrency between the adopted LOS for public facilities and services and the development that places demand on those facilities and services, at the time a Development Order is requested, are separate and distinct from those requiring consistency between all elements of the CGMP, including those between the Future Land Use Map and the adopted LOS for public facilities and services, at the time a request to amend the FLUM is being considered.

In summary, there are three distinct types of facility analyses:

1. Analysis of public facilities for the consideration of an expansion of the USDs
2. A generalized analysis for any FLUM amendment
3. Analysis of public facilities for concurrency during site development review

This analysis is for the consideration of an expansion to the USDs as required by the CGMP. This analysis will be evaluated along with all other CGMP policies.

1. *Roads.*

According to the Capital Improvements Element (CIE) of the CGMP, Policy 14.1A.2(1) and Policy 14.1A.4(1), the adopted roadway levels of service (LOS) are as follows:

Martin County	LOS D
City of Stuart	LOS E
FDOT (SIS Facilities: SR-710, Turnpike, I-95)	LOS C
FDOT (TRIP funded rural roadways)	LOS C

Please see Appendix 1, *2016 Annual Roadway Needs Assessment Memo*, dated May 1, 2017 and Appendix 2, *2016 Roadway LOS Inventory*, dated March 15, 2017.

The first report indicates when failure of LOS will occur. The second report provides an LOS inventory of roadways, their generalized service capacity and type of road.

In summary, the following roadway sections are predicted to have peak hour directional volumes that exceed its generalized service capacity in the next five years.

Roadway	From	To	LOS Exceeded
Cove Road	US-1 (Federal Hwy)	CR-A1A	2017
SR-714 (Palm City Bridge)	Mapp Road	SR-76	2017
CR-714 (Veteran's Mem. Bridge)	Mapp Road	SR-76	2018
CR-A1A (Dixie Hwy)	St Lucie Blvd	Jefferson St	2018
Murphy Road	Mapp Road	High Meadow Ave	2018
US-1 (Federal Hwy)	SR-76	Palm City Rd	2018
Green River Parkway	Dixie Hwy	Baker Rd	2019
CR-707 (Indian River Dr)	CR-707 (Dixie Hwy)	Jensen Beach Blvd	2020
CR-714 (Martin Hwy)	Berry Ave	Mapp Rd	2020
CR-723 (Savannah Rd)	CR-707 (Dixie Hwy)	NE 24 th St	2020
Indian Street	SR-76	US-1 (Federal Hwy)	2020
SR-76	CR-711/CR76A	Locks Rd	2020
Cove Road	Willoughby Blvd	US-1 (Federal Hwy)	2021
Green River Parkway	Baker Rd	SR-732	2021
Indian Street	US-1 (Federal Hwy)	Commerce Ave	2021
SR-710 (Warfield Blvd) *SIS*	CR-609	CR-726 (Citrus)	2021

The following roadway segments are predicted to have peak hour directional volumes that exceed its generalized service capacity after the next five year period.

Roadway	From	To	LOS Exceeded
CR-714 (Martin Hwy)	Florida's Turnpike	CR-713	2022
Cove Road	SR-76	Willoughby Blvd	2023
Pomeroy Street	SR-76	Willoughby Blvd	2023
Pomeroy Street	Willoughby Blvd	US-1 (Federal Hwy)	2024
SR-A1A (Ocean Blvd)	SR-732	St. Lucie County	2024
Green River Parkway	SR-732	St. Lucie County	2025
Indian River Drive	Palmer St	CR-707	2025
Cove Road	CR-A1A	End	2026
CR-711 (Pratt Whitney Rd)	Palm Beach County	CR-708	2026
CR-714 (Martin Hwy)	CR-713	Berry Ave	2026
Pineapple Way	CR-707A	SR-732	2026
Willoughby Blvd	Salerno Rd	Pomeroy St	2026

2. *Potable water services.*

Martin County Utilities (MCU) currently owns and operates two (2) regional water treatment plants: Tropical Farms (TF) and the North Water Treatment Plants (WTPs). The MCU Water System Master Plan was updated in 2015 to provide information regarding development and water flow projections, water demands associated with septic to sewer conversions, infrastructure improvements, and water plant improvements and operations, as well as fire protection demand.

Based on the rate of population growth rate as established in MCU's most recent water use permit application, the build-out demand is expected to be reached by 2045. The projections do not assume an expansion of either the Primary or Secondary Urban Service Districts. See Appendix 3, Figure 3 -1 of the Water System Master Plan, *Past Total Water Production & Projected Total Water Demand for MCCWS Service Area*. The Water System Master Plan is available by request through the Martin County Utilities Department.

3. *Sanitary sewer services.*

MCU's wastewater system is comprised of collection, transmission, treatment, reclaimed water distribution, and disposal (effluent and residuals) systems which provide service to approximately 22,175 retail accounts and 28,896 corresponding equivalent residential connections (ERCs) within the Wastewater System service area. The Wastewater System consists of two (2) wastewater treatment facilities, with primary wastewater effluent

disposal by water reclamation and reuse and excess wastewater effluent disposal by deep well injection.

The 2014 Wastewater and Reclaimed Water Master Plan identified required wastewater transmission system and wastewater treatment plant improvements required to serve future developments and the conversion of existing developments currently on septic tanks to the MCU wastewater system. The master plan also evaluated future reclaimed water distribution system improvements required to beneficially reuse treated effluent within the South Consolidated Reclaim System.

According to the Master Plan, the MCU North Waste Water Treatment Plant (WWTP) has a build-out capacity at the year 2074. The MCU Tropical Farms WWTP has a build-out capacity at the year 2050. See Appendix 4, Figure 2-6 of the Master Plan, *Historical and Projected Wastewater Flow to the MCU North WWTP*. See also Appendix 5, Figure 2-7, *Historical and Projected Wastewater Flow to the MCU Tropical Farms WWTP*.

4. Waste Management services.

As of November 19, 2010 Waste Management increased the capacity at the Okeechobee Landfill and at today’s current volumes it has 150 years of capacity.

The level of service for solid waste in Policy 14.1A.2(5) in the CIE in the CGMP is below:

- (5) *County solid waste facilities:*
 - (a) *Provide annual municipal solid waste facility capacity of 1.06 tons per weighted population.*
 - (b) *When the municipal solid waste facility(ies) falls below the capacity levels stated in subsection (a) above or when the remaining life of the facility(ies) reaches two years, Martin County shall immediately commence with a process to ensure no interruption in disposal activities will occur. This process may include new construction or contracted services.*

The annual Capital Improvement Plan (CIP) Level of Service Analysis for Solid Waste for FY18 is provided below.

FISCAL YEAR	WEIGHTED AVERAGE POPULATION	CAPACITY TONS AVAILABLE 1 OCT OF FY	REQUIRED LOS	CURRENT LOS	TONS Surplus or Deficit (-)
FY18	162,423	243,635	1.06	1.50	0
FY19	164,145	246,218	1.06	1.50	0
FY20	165,878	248,817	1.06	1.50	0
FY21	167,258	250,887	1.06	1.50	0
FY22	168,638	252,957	1.06	1.50	0

FY23	170,018	255,027	1.06	1.50	0
FY24	171,398	257,097	1.06	1.50	0
FY25	172,778	259,167	1.06	1.50	0
FY26	173,938	260,907	1.06	1.50	0
FY27	175,098	262,647	1.06	1.50	0

5. Stormwater Management

Policy 14.1A.2(2) provides for the following LOS for water management, however this LOS is evaluated during the development review process:

(2) *County water management systems:*

Level of Service

Major Drainage Ways (over one square mile) - 8.5" in a 24-hour period (25 year/24-hour design storm)

Underground Facilities Utilizing Storm Sewers - 6" in a 24-hour period (5 year/24-hour design storm)

All Other Facilities - 7" in a 24-hour period (10-year/24-hour design storm)

Finished Floor Elevation - 100-year/3-day storm

(a) *Building floors shall be at or above the 100-year flood elevations, as determined from the most appropriate information, including Federal Flood Insurance Rate Maps. Both tidal flooding and the 100-year, 3-day storm event shall be considered in determining elevations. Lower floor elevations will be considered for agricultural buildings and boat storage facilities that are nonresidential and not routinely accessed by the public.*

(b) *All project sites shall control the timing of discharges to preclude any off-site impact for any storm event. The peak discharge rate shall not exceed the predevelopment discharge rate for the 25-year frequency, 3-day duration storm event.*

The minimum roadway flood protection design storm shall be the 10-year frequency, 24-hour duration storm event unless the roadway is classified as a scenic corridor, in which case the flood protection design storm will consider maintaining the character of the roadway.

6. **Parks.**

Policy 14.1A.2(6) provides for the following LOS parks:

(6) *County parks and recreation facilities: Developed active parkland is three acres per 1,000 population as applied by the recreation planning district specified in the Recreation Element.*

The level of service for Active Parks is currently (FY18) at 7.07 acres per 1,000 County-wide population. The projected level of service in FY27 is 6.53 acres. See the attached Appendix 6 Level of Service Analysis – Active Parkland for FY18 that was provided during the CIP process.

7. Fire Rescue.

Policy 14.1A.2(7) provides for the following LOS:

- (7) *Fire/rescue:*
 - (a) 1) *Advanced Life Support 8 minutes 90% of the time in Urban areas*
 - 2) *Advanced Life Support 20 minutes 90% of the time in Rural areas*
 - 3) *Basic Life Support 6 minutes 90% of the time in Urban areas*
 - 4) *Basic Life Support 15 minutes 90% of the time in Rural areas*
 - 5) *Fire Response 6 minutes 90% of the time in Urban areas*
 - 6) *Fire Response 15 minutes 90% of the time in Rural areas*

In FY18, Fire Rescue exceeds the level of service for urban and rural areas. However, by FY24, there will be a deficit as shown in the FY18 annual CIP Level of Service Analysis:

FISCAL YEAR	UNINC POP 1 Apr of FY	REQ'D RESPONSE TIME-ALS/U	REQ'D RESPONSE TIME-ALS/R	REQ'D RESPONSE TIME-BLS/U	REQ'D RESPONSE TIME-BLS/R	REQ'D RESPONSE TIME-FIRE/U	REQ'D RESPONSE TIME-FIRE/R	REQ'D LOS	CURRENT LOS
FY18	140,879	8	20	6	15	6	15	0.9	0.94
FY19	142,419	8	20	6	15	6	15	0.9	0.93
FY20	143,854	8	20	6	15	6	15	0.9	0.92
FY21	145,084	8	20	6	15	6	15	0.9	0.91
FY22	146,314	8	20	6	15	6	15	0.9	0.91
FY23	147,543	8	20	6	15	6	15	0.9	0.90
FY24	148,773	8	20	6	15	6	15	0.9	0.89
FY25	150,003	8	20	6	15	6	15	0.9	0.89
FY26	151,037	8	20	6	15	6	15	0.9	0.88
FY27	152,070	8	20	6	15	6	15	0.9	0.88

8. Schools.

The following LOS is provided in Policy 14.1A.2.(8). The table provided in Appendix 7 calculates capacity for a five year range. The School District provides the Department of Education with its survey of enrollment counts by which the projections are calculated. Additionally it shows the Permanent Student Station Count along with Portable student stations to give the total capacity.

The table shows limited capacity for Elementary and Middle schools through years 2022-2023, while the high school projections are currently over capacity.

- (8) *Public educational facilities: The County, through its capital improvements element, shall ensure that the capacity of schools is sufficient to support residential development at the adopted level of service (LOS) standards. These standards shall be consistent with the Interlocal Agreement for School Facilities Planning and Siting agreed upon by the County, the School Board and the City of Stuart. The LOS standard to be used by the County, City and the School Board to implement school concurrency shall be as follows:*
- (a) *Elementary School LOS:*
100% of permanent FISH capacity, not to exceed a student capacity cap of 750 plus (450 a/b)
WHERE
a = Number of existing Elementary Schools in the CSA
b = Number of existing Elementary Schools in the District
 - (b) *Middle School LOS:*
100% of permanent FISH capacity, not to exceed a student capacity cap of 1,200 plus (720 a/b)
WHERE
a = Number of existing Middle Schools in the CSA
b = Number of existing Middle Schools in the District
 - (c) *High School LOS:*
100% of permanent FISH capacity, not to exceed a student capacity cap of 1,800 plus (1080 a/b)
WHERE
a = Number of existing High Schools in the CSA
b = Number of existing High Schools in the District
 - (d) *Title I Elementary School LOS:*
85% of permanent FISH capacity, not to exceed a student capacity cap of 750, plus (450 a/b)
WHERE
a = Number of existing Elementary Schools in the CSA
b = Number of existing Elementary Schools in the District
 - (e) *Title I Middle School LOS:*
85% of permanent FISH capacity, not to exceed a student capacity cap of 1,200 plus (720 a/b)
WHERE
a = Number of existing Middle Schools in the CSA
b = Number of existing Middle Schools in the District

9. **Beaches.**

Policy 14.1A.3(1) provides for a level of service for County ocean beaches and beach facilities:

- (1) *County ocean beaches and beach facilities:*

- (a) *Nine parking spaces per 1,000 population (defined, paved or unpaved parking).*

The FY18 LOS analysis for the CIP shows a deficit in beach facilities by the year FY21. See Appendix 8 for the LOS analysis.

10.Libraries.

Policy 14.1A.3(2) and (3) provide for a level of service for County Library facilities:

- (2) *County library buildings: 0.60 square feet per capita.*
- (3) *County library collection: 2.0 volumes per weighted residents.*

The FY18 LOS analysis for the CIP shows a LOS surplus in Library buildings of 4,967 by the year FY27. The same analysis shows a current (FY18) deficit for the Library collections. See Appendix 9 for the LOS analysis.

Appendix 1
2016 Annual Roadway Needs Assessment
Memorandum

**MARTIN COUNTY, FLORIDA
INTER-OFFICE MEMORANDUM**

TO: Honorable Board of County Commissioners

DATE: May 1, 2017

VIA: Taryn Kryzda, CPM
County Administrator



FROM: Terry B. Rauth, P.E.,
Acting Engineering Department Director



Lisa A. Wichser, P.E., CFM
Acting County Engineer



COPY: Don G. Donaldson, P.E., CFM
Deputy County Administrator

SUBJECT: 2016 Annual Roadway Needs Assessment

The Martin County Traffic Engineering Division is tasked with collecting traffic volumes along the County's major roadway network. Each year, the volumes are evaluated and an Annual Average Daily Traffic (AADT) volume and peak hour directional volume are determined. These volumes are then compared to the level of service thresholds published in the Florida Department of Transportation's 2012 Quality / Level of Service (LOS) Handbook and a letter score (A through F) for each road is identified. These volumes and levels of service are published in the annual Roadway Level of Service and Inventory Report (LOS Report). The 2016 LOS Report was published on the County's website on March 24, 2017. The average annual growth rate for each roadway is also identified in the LOS Report and is used to predict future volumes. This assessment provides a summary of the potential short-term needs for future roadway capacity, as required by the Martin County Comprehensive Growth Management Plan (Policy 5.1A.1).

Levels of service indicate the maximum acceptable volume of traffic on a roadway. The level of service thresholds are based on the 2012 FDOT Quality/Level of Service Handbook tables for the level of service adopted by the Comprehensive Growth Management Plan. As noted in the tables, generalized service capacities are thresholds and should only be used for general planning applications. The adopted levels of service are as follows:

Martin County	Level of Service D
City of Stuart	Level of Service E
FDOT (SIS Facilities: SR-710, Turnpike, I-95)	Level of Service C
FDOT (TRIP Funded rural roadways)	Level of Service C

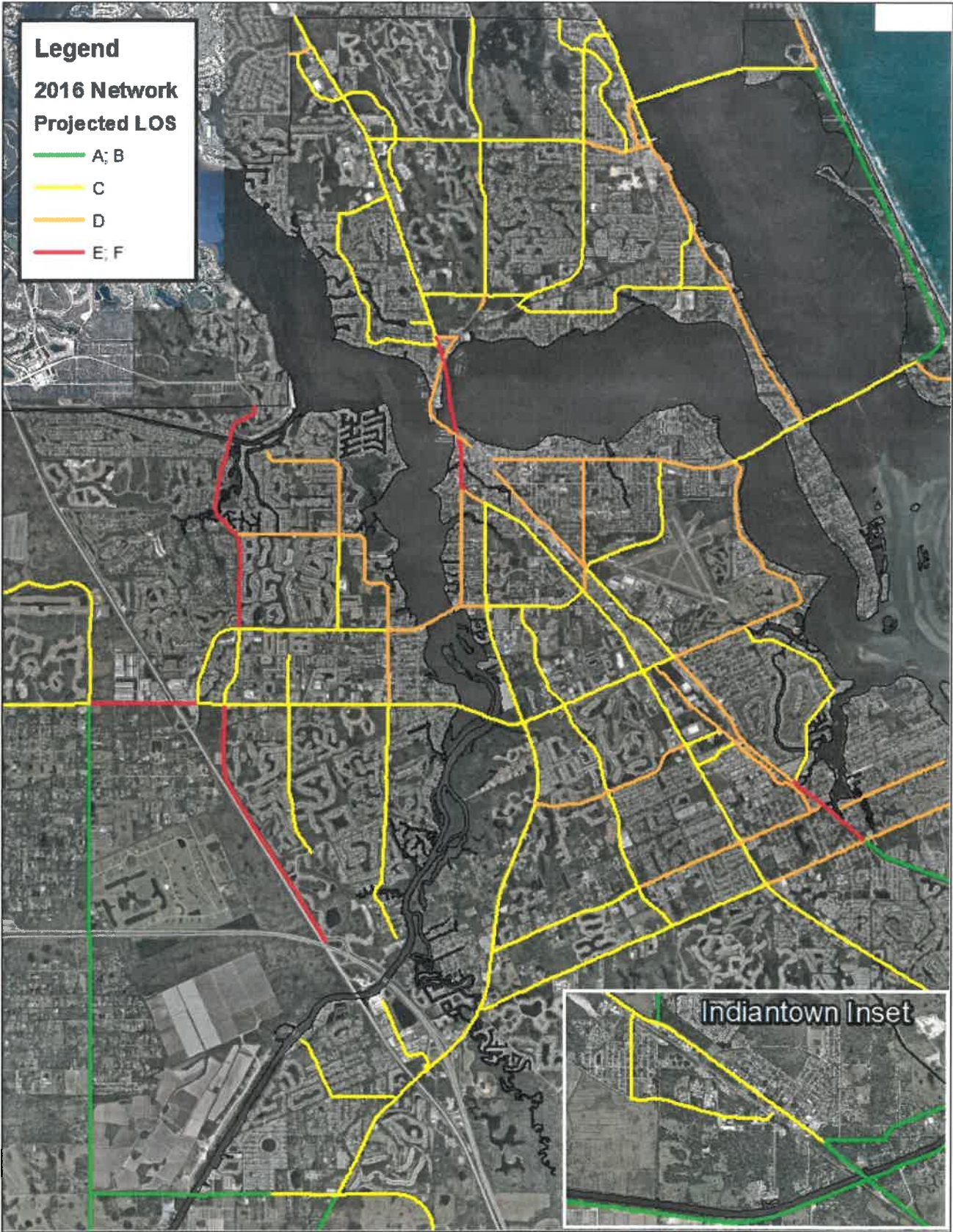
The following roadway segments had peak hour directional volumes in 2016 that exceeded its assigned generalized service capacity and warranted more detailed analysis:

Roadway	From	To
CR-713 (High Meadow Ave)	I-95	CR-714
CR-713 (High Meadow Ave)	SR-714	Murphy Rd
CR-A1A (Dixie Hwy)	Cove Rd	St. Lucie Blvd
Murphy Road	High Meadow Ave	St Lucie County
SR-714 (Martin Hwy)	CR-76A (Citrus)	Florida's Turnpike
US-1 (Federal Hwy)	Palm City Rd	Wright Blvd

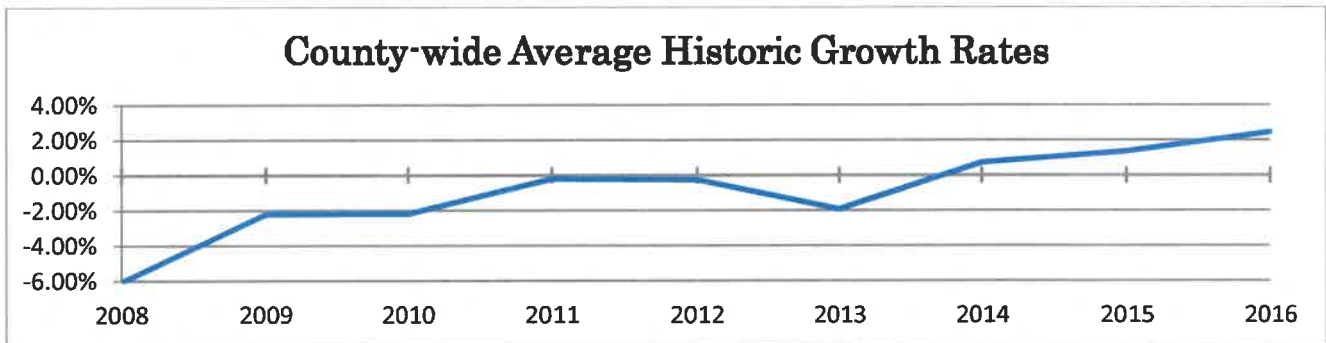
Although the 2016 peak hour directional volume on CR-A1A (Dixie Highway) from Salerno Road to St. Lucie Boulevard exceeds its generalized service capacity, a more refined analysis has determined that the roadway segment is still operating at an acceptable level of service. Since the Board of County Commissioners set the capacity of the roadway with its redesign and reconstruction that resulted in its current configuration, it may be necessary for the roadway to be formally constrained.

The 2016 peak hour directional volume on CR-713 (High Meadow Avenue) from SR-714 (Martin Downs Boulevard) to Murphy Road and Murphy Road from High Meadow Avenue to St. Lucie County exceeds their general service capacities. These roadways will benefit from roundabout improvements that will be designed and constructed in the next two to three years under the *Intersection Improvements* Capital Improvement Project sheet.

Figure 1 - 2016 Level of Service



Historic growth rates are developed using the past four years of data, where available. Although each roadway is evaluated independently, it is interesting to note that the average growth rate of all the roads is steadily rebounding since the recession in 2008. The County-wide rate just below 2.5%.

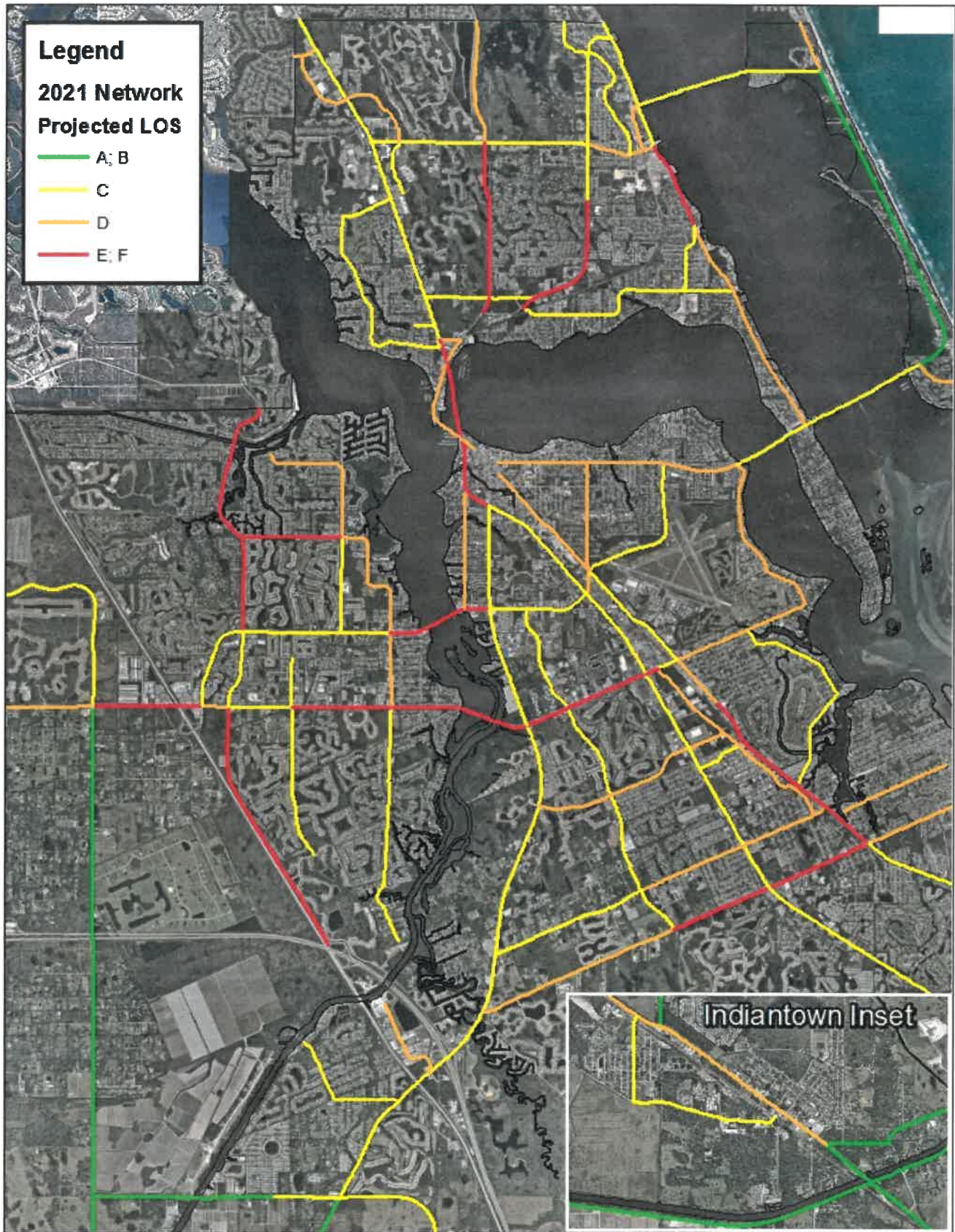


In order to conservatively assess the roadway network, a minimum and a maximum growth rate is applied to the 2016 peak hour directional volumes to predict future volumes for the next ten years. This methodology is used to identify when the predicted volume will exceed a roadway's existing or programmed (funded) service capacity.

The following roadway segments are predicted to have peak hour directional volumes that exceed its generalized service capacity in the first five years:

Roadway	From	To	LOS Exceeded
Cove Road	US-1 (Federal Hwy)	CR-A1A	2017
SR-714 (Palm City Bridge)	Mapp Road	SR-76	2017
CR-714 (Veteran's Mem. Bridge)	Mapp Road	SR-76	2018
CR-A1A (Dixie Hwy)	St Lucie Blvd	Jefferson St	2018
Murphy Road	Mapp Road	High Meadow Ave	2018
US-1 (Federal Hwy)	SR-76	Palm City Rd	2018
Green River Parkway	Dixie Hwy	Baker Rd	2019
CR-707 (Indian River Dr)	CR-707 (Dixie Hwy)	Jensen Beach Blvd	2020
CR-714 (Martin Hwy)	Berry Ave	Mapp Rd	2020
CR-723 (Savannah Rd)	CR-707 (Dixie Hwy)	NE 24 th St	2020
Indian Street	SR-76	US-1 (Federal Hwy)	2020
SR-76	CR-711/CR76A	Locks Rd	2020
Cove Road	Willoughby Blvd	US-1 (Federal Hwy)	2021
Green River Parkway	Baker Rd	SR-732	2021
Indian Street	US-1 (Federal Hwy)	Commerce Ave	2021
SR-710 (Warfield Blvd) *SIS*	CR-609	CR-726 (Citrus)	2021

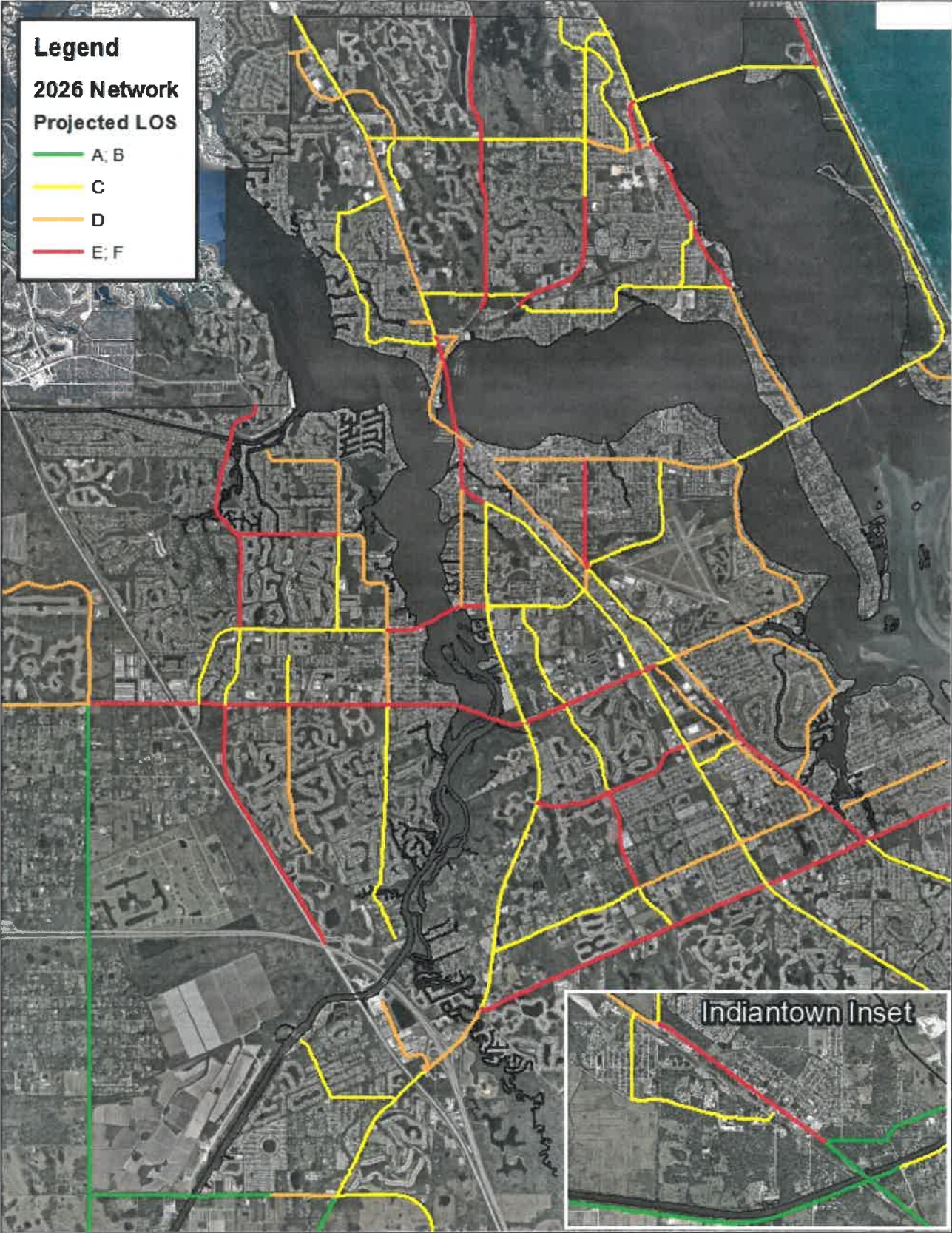
Figure 2 - 2021 Projected Level of Service



The following roadway segments are predicted to have peak hour directional volumes that exceed its generalized service capacity in the second five years:

Roadway	From	To	LOS Exceeded
CR-714 (Martin Hwy)	Florida's Turnpike	CR-713	2022
Cove Road	SR-76	Willoughby Blvd	2023
Pomeroy Street	SR-76	Willoughby Blvd	2023
Pomeroy Street	Willoughby Blvd	US-1 (Federal Hwy)	2024
SR-A1A (Ocean Blvd)	SR-732	St. Lucie County	2024
Green River Parkway	SR-732	St. Lucie County	2025
Indian River Drive	Palmer St	CR-707	2025
Cove Road	CR-A1A	End	2026
CR-711 (Pratt Whitney Rd)	Palm Beach County	CR-708	2026
CR-714 (Martin Hwy)	CR-713	Berry Ave	2026
Pineapple Way	CR-707A	SR-732	2026
Willoughby Blvd	Salerno Rd	Pomeroy St	2026

Figure 3 - Projected 2026 Level of Service

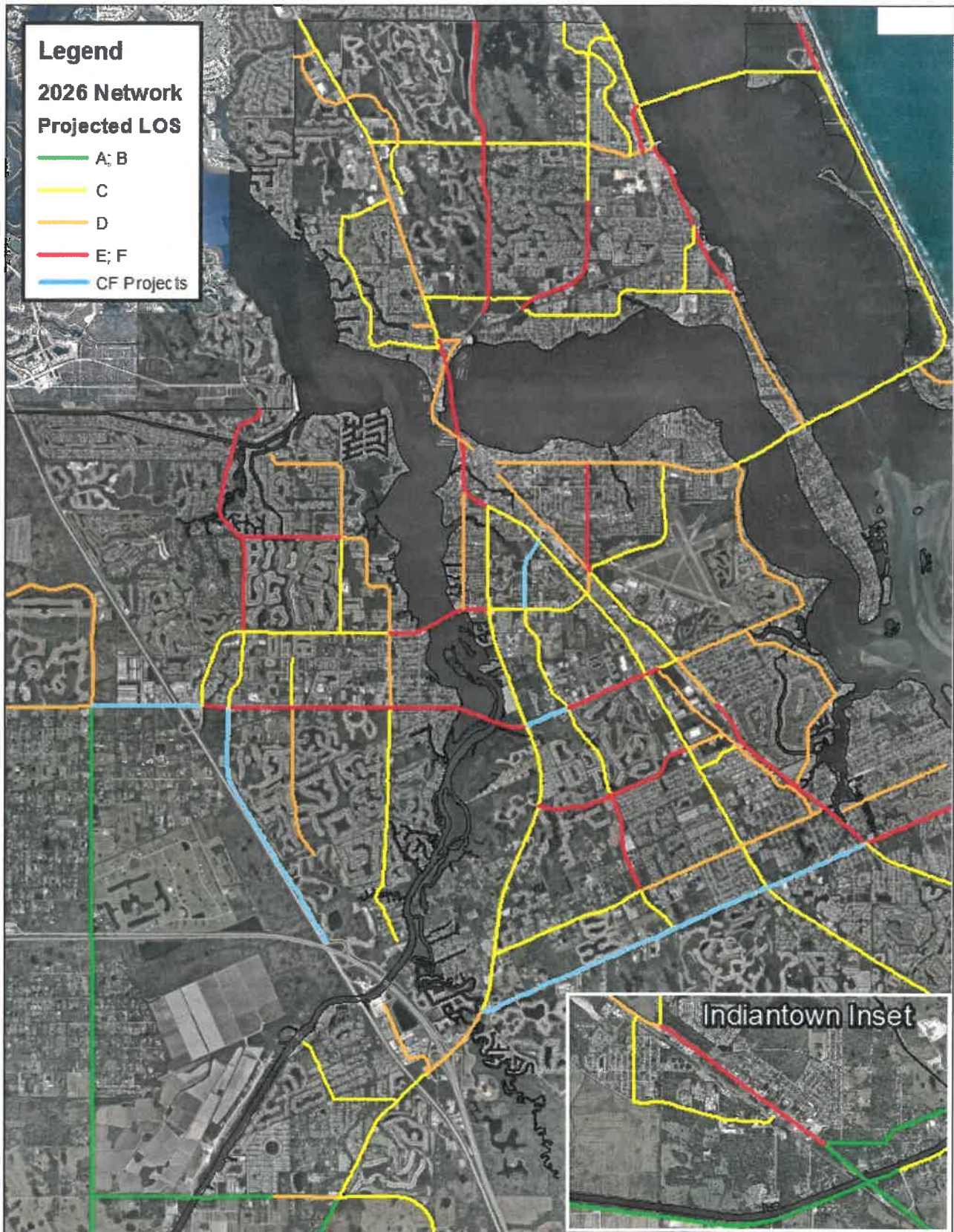


The Martin Metropolitan Planning Organization's last update to the Long Range Transportation Plan (LRTP) includes the following projects in its cost feasible plan to be implemented by 2040:

Roadway	From	To	Planned Improvement
US-1 (Federal Hwy)	Cove Rd	St. Lucie County	Retrofit
SR-714 (Martin Hwy)	CR-76A (Citrus Blvd)	Martin Downs Blvd	2 lanes to 4
CR-713 (High Meadow Ave)	I-95	CR-714 (Martin Hwy)	2 lanes to 4
Indian St	SR-76 (Kanner Hwy)	Willoughby Blvd	4 lanes to 6
Willoughby Blvd	SR-714 (Monterey Blvd)	US-1 (Federal Hwy)	New 2 lane
Cove Rd	SR-76 (Kanner Hwy)	US-1 (Federal Hwy)	2 lanes to 4
Cove Rd	US-1 (Federal Hwy)	CR-A1A (Dixie Hwy)	2 lanes to 4

These planned LRTP improvements will provide additional capacity needed for some of the existing and predicted failing roadways on the County's network. It should be mentioned that some growth rates are very high due to the recent construction of the Veteran's Memorial Bridge, the widening of CR-714 (Martin Highway) and bridge rehabilitation on SR-714 (Martin Downs Boulevard) at Danforth Creek. The application of these growth rates results in the predicted volumes exceeding acceptable capacities much sooner; Murphy Road between High Meadow Avenue and Mapp Road is a prime example. It is expected that the growth rates will fall to more sustainable rates in the next few years once construction is complete and traffic patterns stabilize. A roadway which appears in the LOS Report as failing should be monitored closely, but does not always necessitate action.

Figure 4 - MPO Cost Feasible Capacity Projects



Appendix 2
2016 Roadway LOS Inventory

Martin County 2016 Roadway Level of Service Inventory Report

Road Name	From	To	Type	Generalized Service Capacity	2016 AADT	Peak Hour Factor K ₃₀	Directional Distribution D ₁₀₀	2016 Peak Hour Directional Volume	2016 Generalized LOS	Avg. Annual Growth Rate
Baker Rd	SR-5	CR-723	Class II: 2-Ln Undivided	750	5,041	0.11	0.52	288	C	1.6%
Berry Ave	Golden Bear Wy	CR-714	Class II: 2-Ln Undivided	750	3,954	0.10	0.63	238	C	7.7%
Berry Ave	CR-714	Sunset Tr	Class II: 2-Ln Undivided	750	1,979	0.16	0.62	193	C	6.6%
Britt Rd	Pine Lake Dr	SR-5	Class II: 2-Ln Undivided	750	4,480	0.09	0.59	246	C	0.5%
Citrus Blvd.	CR-714 (Martin Hwy)	Port St. Lucie Blvd.	Transitional 2-Ln Uninter /Undivided Flow	1200	4,510	0.13	0.77	451	C	7.2%
Commerce Ave	Salerno Rd	Monroe St	Class II: 2-Ln Undivided	750	6,017	0.12	0.55	392	D	0.9%
Commerce Ave	Monroe St	Indian St	Class II: 2-Ln Undivided	750	6,338	0.12	0.55	403	D	1.4%
Country Club Dr	Palm Beach County	Island Way	Class II: 2-Ln Undivided	750	2,791	0.10	0.69	199	C	3.1%
Country Club Dr	Island Way	Little Club Dr	Class II: 2-Ln Undivided	750	3,272	0.11	0.57	207	C	1.3%
County Line Rd	Little Club Dr	SR-5	Class II: 2-Ln Undivided	750	2,561	0.12	0.51	153	C	0.5%
Cove Rd	SR-76	Willoughby Blvd	Class I: 2-Ln Undivided	880	14,178	0.10	0.52	766	C	2.6%
Cove Rd	Willoughby Blvd	SR-5	Class I: 2-Ln Undivided	880	15,789	0.09	0.52	761	C	3.0%
Cove Rd	SR-5	CR-A1A	Class II: 2-Ln Undivided	750	13,265	0.10	0.56	727	D	3.6%
Cove Rd	CR-A1A	End	2-Ln Undivided Non-State	675	5,836	0.10	0.83	478	D	3.9%
CR-609 (Allapattah Rd)	SR-710	CR-714	Uninterrupted Rural Hwy: 2-Ln Undivided	740	1,728	0.15	0.60	155	A/B	5.6%
CR-609 (Allapattah Rd)	CR-714	St Lucie County	Uninterrupted Rural Hwy: 2-Ln Undivided	740	1,743	0.14	0.64	157	A/B	6.3%
CR-707 (Beach Rd)	Palm Beach County	CR-708	2-Ln Undivided Non-State	675	1,587	0.13	0.65	131	C	0.5%
CR-707 (Dixie Hwy)	CR-723/CR-707	CR-707 (Indian River Dr)	Class II: 2-Ln Undivided	750	5,645	0.09	0.59	289	C	1.5%
CR-707 (Indian River Dr)	CR-707 (Dixie Hwy)	CR-707A (Jensen Beach Blvd.)	2-Ln Undivided Non-State	675	11,080	0.11	0.56	661	D	0.7%
CR-707 (Indian River Dr)	CR-707A	SR-732	2-Ln Undivided Non-State	675	4,168	0.10	0.63	269	C	0.5%
CR-707 (Indian River Dr)	SR-732	St. Lucie County	2-Ln Undivided Non-State	675	4,618	0.10	0.61	285	C	0.5%
CR-707A (Jensen Beach Blvd)	CR-723	Skyline Dr	Class II: 4-Ln Divided	1630	19,214	0.10	0.54	1,025	D	0.5%
CR-707A (Jensen Beach Blvd)	Skyline Dr	Pineapple Way	Class II: 4-Ln Divided	1630	20,773	0.10	0.56	1,126	D	0.5%

Segments with shaded LOS require additional analysis.

The peaks are: CR-713 I-95 to CR-714 (PM/NB); CR-713 CR-714 to Murphy (AM/SB); CR-A1A (PM/SB); Murphy Rd (PM/NB); SR-5 (PM/NB); and SR-714 (AM/WB).

Martin County 2016 Roadway Level of Service Inventory Report

Road Name	From	To	Type	Generalized Service Capacity	2016 AADT	Peak Hour Factor K ₃₀	Directional Distribution D ₁₀₀	2016 Peak Hour Directional Volume	2016 Generalized LOS	Avg. Annual Growth Rate
CR-707A (Jensen Beach Blvd)	Pineapple Wy	CR-707	2-Ln Undivided Non-State	675	9,367	0.10	0.54	489	D	0.5%
CR-708 (Bridge Rd)	SR-76	CR-711	Uninterrupted Rural Hwy: 2-Ln Undivided	740	737	0.12	0.59	52	A/B	5.2%
CR-708 (Bridge Rd)	CR-711	I-95	Uninterrupted Rural Hwy: 2-Ln Undivided	740	3,061	0.13	0.59	230	A/B	6.7%
CR-708 (Bridge Rd)	I-95	Powerline Ave	Transitional 2-Ln Uninter /Undivided Flow	1200	7,961	0.12	0.53	486	C	5.3%
CR-708 (Bridge Rd)	Powerline Ave	SR-5	Class I: 2-Ln Undivided	880	9,322	0.11	0.51	523	C	4.6%
CR-708 (Bridge Rd)	SR-5	CR-A1A	2-Ln Undivided Non-State	675	9,275	0.11	0.51	540	D	0.7%
CR-708 (Bridge Rd)	CR-A1A	Gomez Ave	2-Ln Undivided Non-State	675	8,215	0.10	0.54	431	D	0.5%
CR-708 (Bridge Rd)	Gomez Ave	CR-707	Class II: 2-Ln Undivided	750	5,216	0.13	0.51	341	C	2.4%
CR-711 (Pratt Whitney Rd)	Palm Beach County	CR-708	Uninterrupted Rural Hwy: 2-Ln Undivided	740	3,343	0.13	0.87	376	C	7.5%
CR-711 (Pratt Whitney Rd)	CR-708	South Fork High School	Class I: Transitional 2-Ln Undivided	800	4,436	0.12	0.65	347	C	6.5%
CR-711 (Pratt Whitney Rd)	South Fork High School	SR-76	Class I: Transitional 2-Ln Undivided	800	5,007	0.12	0.93	549	C	1.4%
CR-713 (High Meadow Ave)	I-95	CR-714	2-Ln Uninter /Undivided Flow	1190	12,789	0.13	0.70	1,201	E	0.5%
CR-713 (High Meadow Ave)	CR-714	SR-714	Class I: 2-Ln Undivided	880	9,722	0.11	0.53	583	C	0.8%
CR-713 (High Meadow Ave)	SR-714	Murphy Rd	Class I: 2-Ln Undivided	880	12,152	0.12	0.64	897	F	3.0%
CR-714 (Martin Hwy)	SR-710	Fox Brown Rd	Uninterrupted Rural Hwy: 2-Ln Undivided	740	3,018	0.12	0.61	217	A/B	5.9%
CR-714 (Martin Hwy)	Fox Brown Rd	CR-609	Uninterrupted Rural Hwy: 2-Ln Undivided	740	2,961	0.11	0.53	168	A/B	3.1%
CR-714 (Martin Hwy)	CR-609	I-95	Uninterrupted Rural Hwy: 2-Ln Undivided	740	4,976	0.10	0.58	296	C	6.7%
CR-714 (Martin Hwy)	Florida's Turnpike	CR-713	Class I: 4-Ln Divided	2000	21,287	0.12	0.54	1,343	C	8.0%
CR-714 (Martin Hwy)	CR-713	Berry Ave	Class I: 4-Ln Divided	2000	17,613	0.11	0.53	983	C	8.0%
CR-714 (Martin Hwy)	Berry Ave	Mapp Rd	Class I: 4-Ln Divided	2000	26,222	0.11	0.51	1,509	C	8.0%
CR-714 (Veteran's Memorial Bridge)	Mapp Rd	SR-76	Class I: 4-Ln Divided	2000	22,489	0.13	0.62	1,852	C	8.0%
CR-723 (Savanna Rd)	CR-707	NE 24th St	Class I: 2-Ln Undivided	880	10,705	0.12	0.55	734	C	6.1%
CR-723 (Savanna Rd)	NE 24th St	CR-707A (Jensen Beach Blvd.)	Class I: 2-Ln Undivided	880	9,285	0.10	0.53	476	C	0.5%

Segments with shaded LOS require additional analysis.

The peaks are: CR-713 I-95 to CR-714 (PM/NB); CR-713 CR-714 to Murphy (AM/SB); CR-A1A (PM/SB); Murphy Rd (PM/NB); SR-5 (PM/NB); and SR-714 (AM/WB).

Martin County 2016 Roadway Level of Service Inventory Report

Road Name	From	To	Type	Generalized Service Capacity	2016 AADT	Peak Hour Factor K ₃₀	Directional Distribution D ₁₀₀	2016 Peak Hour Directional Volume	2016 Generalized LOS	Avg. Annual Growth Rate
CR-726 (Citrus Blvd)	SR-710	Greenridge Ln	Uninterrupted Rural Hwy: 2-Ln Undivided	740	2,553	0.12	0.52	154	A/B	0.6%
CR-726 (Citrus Blvd)	Greenridge Ln	CR-76A	Uninterrupted Rural Hwy: 2-Ln Undivided	740	2,268	0.10	0.70	161	A/B	1.9%
CR-76A (Citrus Blvd.)	CR-726	SR-714	Transitional 2-Ln Uninter /Undivided Flow	1200	3,673	0.09	0.52	176	A/B	3.1%
CR-76A (SW 96th St)	CR-726	Pennsylvania Ave	Transitional 2-Ln Uninter /Undivided Flow	1200	3,661	0.10	0.52	194	A/B	4.5%
CR-76A (SW 96th St)	Pennsylvania Ave	SR-76	Class I: Transitional 2-Ln Undivided	800	7,992	0.09	0.68	494	C	4.2%
CR-A1A (Dixie Hwy)	SR-5	CR-708	Class II: 2-Ln Undivided	750	3,249	0.10	0.59	198	C	7.7%
CR-A1A (Dixie Hwy)	CR-708	Osprey St	Class I: 2-Ln Undivided	880	7,354	0.11	0.55	457	C	3.7%
CR-A1A (Dixie Hwy)	Osprey St	Heritage Blvd	2-Ln Uninter /Undivided Flow	1190	6,381	0.12	0.53	409	A/B	5.7%
CR-A1A (Dixie Hwy)	Heritage Blvd	Cove Rd	2-Ln Uninter /Undivided Flow	1190	6,842	0.09	0.58	369	A/B	3.9%
CR-A1A (Dixie Hwy)	Cove Rd	Salerno Rd	Class II: 2-Ln Divided	790	12,364	0.11	0.62	848	F	3.7%
CR-A1A (Dixie Hwy)	Salerno Rd	St. Lucie Blvd	Class II: 2-Ln Undivided	750	15,883	0.11	0.51	891	F	2.6%
CR-A1A (Dixie Hwy)	St Lucie Blvd	Jefferson St	Class II: 2-Ln Undivided	750	13,664	0.10	0.51	724	D	3.5%
CR-A1A (Dixie Hwy)	Jefferson St	Indian St	Class II: 4-Ln Divided	1630	17,526	0.10	0.53	929	D	2.3%
CR-A1A (Dixie Hwy)	Indian St	SR-714	Class I: 4-Ln Divided	2000	16,127	0.11	0.55	971	C	4.5%
CR-A1A (Dixie Hwy)	SR-714	SE Fifth St	2-Ln Undivided Non-State	675	6,483	0.11	0.53	385	D	4.7%
Crossrip St	CR-A1A	Gomez Ave	2-Ln Undivided Non-State	675	2,712	0.10	0.59	165	C	2.7%
Dixie Hwy	Joan Jefferson Wy	Wright Blvd	Class II: 2-Ln Undivided	750	8,118	0.12	0.64	601	D	0.7%
Dr Martin Luther King Jr Blvd	Farm Rd	SR-710	2-Ln Undivided Non-State	675	1,774	0.12	0.52	114	C	0.7%
Farm Rd	Dr Martin Luther King Jr Dr	Palm Wy	Class II: 2-Ln Undivided	750	2,448	0.13	0.57	186	C	2.3%
Fork Rd	Pine Lake Dr	SR-5	2-Ln Undivided Non-State	675	1,189	0.11	0.60	77	C	0.5%
Goldenrod Rd	Britt Rd	SR-732	Class II: 4-Ln Divided	1630	4,897	0.12	0.58	349	C	0.5%
Goldenrod Rd	SR-732	SR-5	Class II: 2-Ln Undivided	750	6,332	0.11	0.55	369	C	0.5%
Goldenrod Rd	SR-5	Westmoreland Blvd	Class II: 2-Ln Undivided	750	4,284	0.10	0.83	371	C	5.0%

Segments with shaded LOS require additional analysis.

The peaks are: CR-713 I-95 to CR-714 (PM/NB); CR-713 CR-714 to Murphy (AM/SB); CR-A1A (PM/SB); Murphy Rd (PM/NB); SR-5 (PM/NB); and SR-714 (AM/WB).

Martin County 2016 Roadway Level of Service Inventory Report

Road Name	From	To	Type	Generalized Service Capacity	2016 AADT	Peak Hour Factor K ₃₀	Directional Distribution D ₁₀₀	2016 Peak Hour Directional Volume	2016 Generalized LOS	Avg. Annual Growth Rate
Gomez Ave	CR-708	Crossrip St	Class II: 2-Ln Undivided	750	3,811	0.15	0.52	298	C	2.3%
Gomez Ave	Crossrip St	Osprey St	Class II: 2-Ln Undivided	750	1,122	0.13	0.62	92	C	0.5%
Green River Parkway	Dixie Hwy	Baker Rd	Class II: 2-Ln Undivided	750	6,689	0.13	0.71	606	D	8.0%
Green River Parkway	Baker Rd	SR-732	Class I: 2-Ln Undivided	880	7,669	0.13	0.64	616	C	8.0%
Green River Parkway	SR-732	St. Lucie County	2-Ln Uninter /Undivided Flow	1190	9,034	0.11	0.63	608	C	8.0%
Horseshoe Point Rd	CR-A1A	Kubin Ave	2-Ln Undivided Non-State	675	5,922	0.10	0.66	383	D	1.5%
Indian St	SR-76	Willoughby Blvd	Class I: 4-Ln Divided	2000	26,718	0.10	0.57	1,477	C	8.0%
Indian St	Willoughby Blvd	SR-5	Class I: 4-Ln Divided	2000	26,466	0.10	0.58	1,521	C	8.0%
Indian St	SR-5	Commerce Ave	Class I: 4-Ln Divided	2000	25,657	0.11	0.55	1,494	C	6.6%
Indian St	Commerce Ave	CR-A1A	Class I: 4-Ln Divided	2000	23,617	0.10	0.51	1,166	C	2.1%
Indian St	CR-A1A	St Lucie Blvd	2-Ln Undivided Non-State	675	6,789	0.10	0.52	364	D	0.5%
Indian River Dr	Palmer St	CR-707	Class II: 2-Ln Undivided	750	7,281	0.11	0.69	560	D	3.6%
Island Way	Palm Beach County	Jupiter Road	Transitional 2-Ln Uninter /Undivided Flow	1200	4,073	0.10	0.60	250	A/B	3.1%
Island Way	Jupiter Road	Country Club Dr	Class II: 2-Ln Undivided	750	2,025	0.14	0.55	161	C	0.5%
Jack James Rd	SR-76	Blue Water Wy	Class II: 2-Ln Undivided	750	3,407	0.13	0.63	285	C	8.0%
Lares St	CR-708	CR-A1A	2-Ln Undivided Non-State	675	3,386	0.10	0.57	199	C	4.5%
Little Club Wy	Country Club Dr	Wooden Bridge Wy	2-Ln Undivided Non-State	675	2,334	0.11	0.54	134	C	1.1%
Locks Rd	Canal St	SR-76	2-Ln Undivided Non-State	675	3,797	0.10	0.68	254	C	2.6%
MacArthur Blvd	Sailfish Point	SR-A1A	2-Ln Undivided Non-State	675	4,356	0.12	0.70	360	D	0.5%
Mapp Rd	South End	CR-714	Class II: 2-Ln Undivided	750	5,343	0.10	0.50	266	C	0.5%
Mapp Rd	CR-714	SR-714	Class II: 2-Ln Undivided	750	12,388	0.10	0.52	653	D	0.5%
Mapp Rd	SR-714	Matheson Ave	Class II: 2-Ln Undivided	750	5,436	0.12	0.67	437	D	2.3%
Mapp Rd	Matheson Ave	North End	Class II: 2-Ln Undivided	750	7,590	0.10	0.54	400	D	1.0%

Segments with shaded LOS require additional analysis.

The peaks are: CR-713 I-95 to CR-714 (PM/NB); CR-713 CR-714 to Murphy (AM/SB); CR-A1A (PM/SB); Murphy Rd (PM/NB); SR-5 (PM/NB); and SR-714 (AM/WB).

Martin County 2016 Roadway Level of Service Inventory Report

Road Name	From	To	Type	Generalized Service Capacity	2016 AADT	Peak Hour Factor K ₃₀	Directional Distribution D ₁₀₀	2016 Peak Hour Directional Volume	2016 Generalized LOS	Avg. Annual Growth Rate
Market Pl	SR-5	Commerce Ave	Class II: 2-Ln Divided	790	4,311	0.11	0.56	271	C	7.7%
Matheson Ave	SR-714	Mapp Rd	Class II: 2-Ln Undivided	750	5,987	0.10	0.57	336	C	0.5%
Monroe St	SR-5	Commerce Ave	Class II: 2-Ln Undivided	750	1,682	0.16	0.62	169	C	0.5%
Murphy Rd	Mapp Rd	High Meadow Ave	Class II: 2-Ln Undivided	750	8,842	0.14	0.56	692	D	8.0%
Murphy Rd	High Meadow Ave	St Lucie County	Class II: 2-Ln Undivided	750	9,481	0.13	0.76	907	F	6.2%
North River Shores Blvd	Spruce Ridge Dr	SR-5	2-Ln Undivided Non-State	675	2,807	0.10	0.65	181	C	8.0%
Ocean Blvd	Flagler Ave	Palm Beach Rd	Class II: 2-Ln Divided	790	10,045	0.10	0.58	583	D	1.8%
Ocean Blvd	Palm Beach Rd	SR-714	4-Ln Divided Non-State	1465	13,921	0.09	0.54	676	D	2.5%
Osprey St	SR-5	CR-A1A	Class II: 2-Ln Undivided	750	5,183	0.07	0.62	240	C	4.1%
Osprey St	CR-A1A	Gomez Ave	Class II: 2-Ln Undivided	750	2,074	0.12	0.57	141	C	1.3%
Palm Beach Rd	SR-714	Ocean Blvd	2-Ln Divided Non-State	710	9,437	0.10	0.57	520	D	3.6%
Palm City Rd	SR-714	SR-5	Class II: 2-Ln Undivided	750	7,231	0.09	0.73	493	D	1.5%
Palmer St	CR-707	Indian River Dr	Class II: 2-Ln Undivided	750	2,984	0.12	0.63	227	C	3.4%
Pine Lake Dr	Fork Rd	Britt Rd	2-Ln Undivided Non-State	675	1,190	0.11	0.52	66	C	0.5%
Pineapple Wy	CR-707A(Jensen Beach Blvd.)	SR-732	Class II: 2-Ln Undivided	750	11,139	0.10	0.56	605	D	2.6%
Pomeroy St	SR-76	Willoughby Blvd	Class II: 2-Ln Divided	790	9,278	0.10	0.64	589	D	5.0%
Pomeroy St	Willoughby Blvd	SR-5	Class II: 2-Ln Divided	790	8,354	0.10	0.59	510	D	6.4%
Salerno Rd	SR-76	Willoughby Blvd	Class I: 2-Ln Undivided	880	8,071	0.10	0.56	461	C	2.4%
Salerno Rd	Willoughby Blvd	SR-5	Class II: 2-Ln Divided	790	9,371	0.11	0.50	508	D	1.7%
Salerno Rd	SR-5	Commerce Ave	Class II: 2-Ln Undivided	750	10,175	0.10	0.57	584	D	1.9%
Salerno Rd	Commerce Ave	CR-A1A	Class II: 2-Ln Undivided	750	8,058	0.10	0.51	409	D	1.6%
Savanna Rd	CR-707A	County Line Rd	2-Ln Undivided Non-State	675	1,175	0.11	0.60	78	C	2.1%
Seabranh Blvd	Doubletree Dr	SR-5	Class I: 4-Ln Divided	2000	6,964	0.14	0.56	545	C	1.1%

Segments with shaded LOS require additional analysis.

The peaks are: CR-713 I-95 to CR-714 (PM/NB); CR-713 CR-714 to Murphy (AM/SB); CR-A1A (PM/SB); Murphy Rd (PM/NB); SR-5 (PM/NB); and SR-714 (AM/WB).

Martin County 2016 Roadway Level of Service Inventory Report

Road Name	From	To	Type	Generalized Service Capacity	2016 AADT	Peak Hour Factor K ₃₀	Directional Distribution D ₁₀₀	2016 Peak Hour Directional Volume	2016 Generalized LOS	Avg. Annual Growth Rate
Sewalls Pt Rd	SR-A1A	Palmer St	2-Ln Undivided Non-State	675	8,242	0.10	0.71	604	D	0.5%
Skyline Dr	CR-707A	CR-707	2-Ln Undivided Non-State	675	1,830	0.09	0.54	92	C	0.5%
SR-15 (Connors Hwy)	Palm Beach County	SR-76	Uninterrupted Rural Hwy: 2-Ln Undivided	740	4,673	0.09	0.64	280	C	2.7%
SR-15 (Connors Hwy)	SR-76	Okeechobee County	Uninterrupted Rural Hwy: 2-Ln Undivided	740	2,985	0.09	0.56	150	A/B	2.5%
SR-5 (US-1)	Palm Beach County	CR-A1A	Transitional 4-Ln Uninter /Divided Flow	3110	19,946	0.12	0.53	1,256	A/B	1.7%
SR-5 (US-1)	CR-A1A	CR-708	Class I: 4-Ln Divided	2000	16,965	0.12	0.58	1,152	C	4.8%
SR-5 (US-1)	CR-708	Osprey St	Class I: 4-Ln Divided	2000	23,736	0.10	0.67	1,664	C	2.1%
SR-5 (US-1)	Osprey St	Seabbranch Blvd	Class I: 4-Ln Divided	2000	23,330	0.09	0.58	1,283	C	2.3%
SR-5 (US-1)	Seabbranch Blvd	Cove Rd	Class I: 6-Ln Divided	3020	30,223	0.10	0.53	1,640	C	1.9%
SR-5 (US-1)	Cove Rd	Salerno Rd	Class I: 6-Ln Divided	3020	32,967	0.09	0.57	1,686	C	0.8%
SR-5 (US-1)	Salerno Rd	Monroe St	Class I: 6-Ln Divided	3020	38,993	0.10	0.56	2,112	C	0.7%
SR-5 (US-1)	Monroe St	Indian St	Class I: 6-Ln Divided	3020	43,590	0.09	0.54	2,233	C	2.2%
SR-5 (US-1)	Indian St	SR-714	Class I: 6-Ln Divided	3020	44,781	0.10	0.52	2,270	C	1.6%
SR-5 (US-1)	SR-714	SR-5A	Class I: 6-Ln Divided	3020	37,711	0.10	0.50	1,830	C	0.5%
SR-5 (US-1)	SR-5A(Cut-off Rd)	SR-76	Class I: 6-Ln Divided	3020	37,021	0.08	0.51	1,588	C	1.0%
SR-5 (US-1)	SR-76	Palm City Rd	Class II: 6-Ln Divided	2520	49,978	0.10	0.51	2,446	D	1.9%
SR-5 (US-1)	Palm City Rd	Joan Jefferson Wy	Class II: 6-Ln Divided	2520	56,619	0.09	0.58	3,004	F	1.4%
SR-5 (US-1)	Joan Jefferson Wy	Wright Blvd	Class I: 6-Ln Divided	3020	59,925	0.09	0.60	3,258	F	1.1%
SR-5 (US-1)	Wright Blvd	Baker Rd	Class I: 6-Ln Divided	3020	55,371	0.08	0.51	2,243	C	1.5%
SR-5 (US-1)	Baker Rd	Britt Rd	Class I: 6-Ln Divided	3020	53,828	0.10	0.55	2,816	C	0.5%
SR-5 (US-1)	Britt Rd	SR-732	Class I: 6-Ln Divided	3020	57,143	0.09	0.51	2,746	C	0.9%
SR-5 (US-1)	SR-732	Westmoreland Blvd	Class I: 8-Ln Divided	4040	63,736	0.09	0.52	3,044	C	0.5%
SR-5 (US-1)	Westmoreland Blvd	St Lucie County	Class I: 8-Ln Divided	4040	60,790	0.09	0.55	2,951	C	0.5%

Segments with shaded LOS require additional analysis.

The peaks are: CR-713 I-95 to CR-714 (PM/NB); CR-713 CR-714 to Murphy (AM/SB); CR-A1A (PM/SB); Murphy Rd (PM/NB); SR-5 (PM/NB); and SR-714 (AM/WB).

Martin County 2016 Roadway Level of Service Inventory Report

Road Name	From	To	Type	Generalized Service Capacity	2016 AADT	Peak Hour Factor K ₃₀	Directional Distribution D ₁₀₀	2016 Peak Hour Directional Volume	2016 Generalized LOS	Avg. Annual Growth Rate
SR-710 (Warfield Blvd)	Okeechobee County	Fox Brown Rd	Uninterrupted Rural Hwy: 2-Ln Undivided	670	6,007	0.10	0.56	334	C	4.0%
SR-710 (Warfield Blvd)	Fox Brown Rd	CR-609 (Allapattah)	Uninterrupted Rural Hwy: 2-Ln Undivided	670	7,108	0.09	0.59	395	C	3.0%
SR-710 (Warfield Blvd)	CR-609 (Allapattah)	Van Buren	Class I: Transitional 2-Ln Divided	745	11,284	0.10	0.57	620	C	4.1%
SR-710 (Warfield Blvd)	Van Buren	CR-726 (Citrus)	Class I: Transitional 2-Ln Divided	745	11,284	0.10	0.57	620	C	4.1%
SR-710 (Warfield Blvd)	CR-726	SR-76 (Kanner)	Transitional 4-Ln Uninter /Divided Flow	2450	10,106	0.09	0.51	483	A/B	3.5%
SR-710 (Warfield Blvd)	SR-76	Palm Beach County	Transitional 4-Ln Uninter /Divided Flow	2450	7,153	0.09	0.54	363	A/B	4.8%
SR-714 (Martin Hwy)	I-95	CR-76A (Citrus)	Transitional 2-Ln Uninter /Undivided Flow	1200	11,948	0.10	0.54	636	C	6.1%
SR-714 (Martin Hwy)	CR-76A (Citrus)	Florida's Turnpike	Class I: 2-Ln Divided	925	18,228	0.10	0.59	1,127	F	4.4%
SR-714 (Martin Downs Blvd)	Florida's Turnpike	CR-713	Class I: 4-Ln Divided	2000	20,894	0.10	0.55	1,178	C	2.0%
SR-714 (Martin Downs Blvd)	CR-713	Matheson Ave	Class I: 4-Ln Divided	2000	30,155	0.10	0.54	1,694	C	0.5%
SR-714 (Martin Downs Blvd)	Matheson Ave	Mapp Rd	Class I: 4-Ln Divided	2000	31,595	0.10	0.53	1,664	C	0.5%
SR-714 (Palm City Bridge)	Mapp Rd	SR-76	Class I: 4-Ln Divided	2000	34,768	0.10	0.59	1,993	D	0.5%
SR-714 (Monterey Rd)	SR-76	Willoughby Blvd	Class I: 4-Ln Divided	2000	25,038	0.08	0.63	1,271	C	0.5%
SR-714 (Monterey Rd)	Willoughby Blvd	Monterey Extension	Class I: 4-Ln Divided	2000	24,473	0.10	0.60	1,465	C	0.5%
SR-714 (Monterey Rd)	Monterey Extension	SR-5	Class I: 4-Ln Divided	2000	17,630	0.10	0.58	991	C	0.8%
SR-714 (Monterey Rd)	SR-5	CR-A1A	Class II: 4-Ln Divided	1630	22,223	0.10	0.54	1,243	D	0.5%
SR-714 (Monterey Rd)	CR-A1A	SR-A1A	Class I: 4-Ln Divided	1910	15,269	0.11	0.51	869	C	0.5%
SR-732 (Causeway Blvd)	CR-707	SR-A1A	2-Ln Uninter /Undivided Flow	1190	13,440	0.08	0.62	698	C	1.6%
SR-732 (Jensen Beach Blvd)	SR-5	Green River Pkwy	Class I: 4-Ln Divided	2000	26,487	0.09	0.53	1,310	C	0.9%
SR-732 (Jensen Beach Blvd)	Green River Pkwy	CR-723	Class I: 4-Ln Divided	2000	25,672	0.10	0.54	1,335	C	0.5%
SR-76 (Kanner Hwy)	SR-15	SR-710	Uninterrupted Rural Hwy: 2-Ln Undivided	740	2,012	0.12	0.54	127	A/B	3.9%
SR-76 (Kanner Hwy)	SR-710	CR-708	Uninterrupted Rural Hwy: 2-Ln Undivided	740	3,486	0.10	0.50	182	A/B	4.7%
SR-76 (Kanner Hwy)	CR-708	CR-711/CR-76A	Transitional 2-Ln Uninter /Undivided Flow	1200	3,103	0.10	0.54	170	A/B	4.0%

Segments with shaded LOS require additional analysis.

The peaks are: CR-713 I-95 to CR-714 (PM/NB); CR-713 CR-714 to Murphy (AM/SB); CR-A1A (PM/SB); Murphy Rd (PM/NB); SR-5 (PM/NB); and SR-714 (AM/WB).

Martin County 2016 Roadway Level of Service Inventory Report

Road Name	From	To	Type	Generalized Service Capacity	2016 AADT	Peak Hour Factor K ₃₀	Directional Distribution D ₁₀₀	2016 Peak Hour Directional Volume	2016 Generalized LOS	Avg. Annual Growth Rate
SR-76 (Kanner Hwy)	CR-711/CR76A	Locks Rd	Class I: 4-Ln Divided	2000	13,175	0.11	0.52	772	C	3.6%
SR-76 (Kanner Hwy)	Locks Rd	Jack James	Class I: 4-Ln Divided	2000	20,700	0.09	0.60	1,163	C	3.0%
SR-76 (Kanner Hwy)	Jack James	Cove Rd	Class I: 6-Ln Divided	3020	43,741	0.10	0.52	2,295	C	2.6%
SR-76 (Kanner Hwy)	Cove Rd	Salerno Rd	Class I: 6-Ln Divided	3020	32,494	0.10	0.53	1,721	C	2.0%
SR-76 (Kanner Hwy)	Salerno Rd	Indian St	Class I: 6-Ln Divided	3020	28,182	0.10	0.52	1,403	C	1.9%
SR-76 (Kanner Hwy)	Indian St	SR-714	Class I: 6-Ln Divided	3020	22,102	0.09	0.54	1,124	C	0.5%
SR-76 (Kanner Hwy)	SR-714	SR-5	Class I: 6-Ln Divided	3020	27,943	0.10	0.52	1,455	C	0.6%
SR-A1A (Ocean Blvd)	SR-714	St Lucie Blvd	Class II: 4-Ln Divided	1630	18,575	0.10	0.52	1,002	D	1.1%
SR-A1A (Ocean Blvd)	St Lucie Blvd	Sewalls Point Rd	Class I: 4-Ln Divided	2000	23,222	0.10	0.53	1,291	C	3.4%
SR-A1A (Ocean Blvd)	Sewalls Point Rd	MacArthur Blvd	Class I: 2-Ln Divided	925	12,326	0.10	0.54	642	C	1.7%
SR-A1A (Ocean Blvd)	MacArthur Blvd	SR-732	2-Ln Uninter /Undivided Flow	1190	7,756	0.09	0.53	371	A/B	1.5%
SR-A1A (Ocean Blvd)	SR-732	St Lucie County	2-Ln Uninter /Undivided Flow	1190	15,100	0.11	0.51	882	D	4.4%
St Lucie Blvd	CR-A1A	Indian St	2-Ln Undivided Non-State	675	3,397	0.12	0.54	217	C	4.4%
St Lucie Blvd	Indian St	SR-A1A	2-Ln Undivided Non-State	675	6,631	0.11	0.52	372	D	0.5%
Westmoreland Blvd	St Lucie County	SR-5	Class II: 2-Ln Divided	790	11,927	0.09	0.53	596	D	1.6%
Willoughby Blvd	Cove Rd	Salerno Rd	Class I: 2-Ln Undivided	880	3,898	0.11	0.67	286	C	7.5%
Willoughby Blvd	Salerno Rd	Pomeroy St	Class I: 2-Ln Undivided	880	8,838	0.12	0.55	563	C	5.2%
Willoughby Blvd	Pomeroy St	Indian St	Class I: 4-Ln Divided	2000	6,786	0.11	0.57	425	C	0.5%
Willoughby Blvd	Indian St	SR-714	Class I: 4-Ln Divided	2000	9,661	0.11	0.53	563	C	0.5%
Wright Blvd	SR-5	Dixie Highway	Class II: 2-Ln Undivided	750	8,944	0.10	0.56	495	D	0.5%

Segments with shaded LOS require additional analysis.

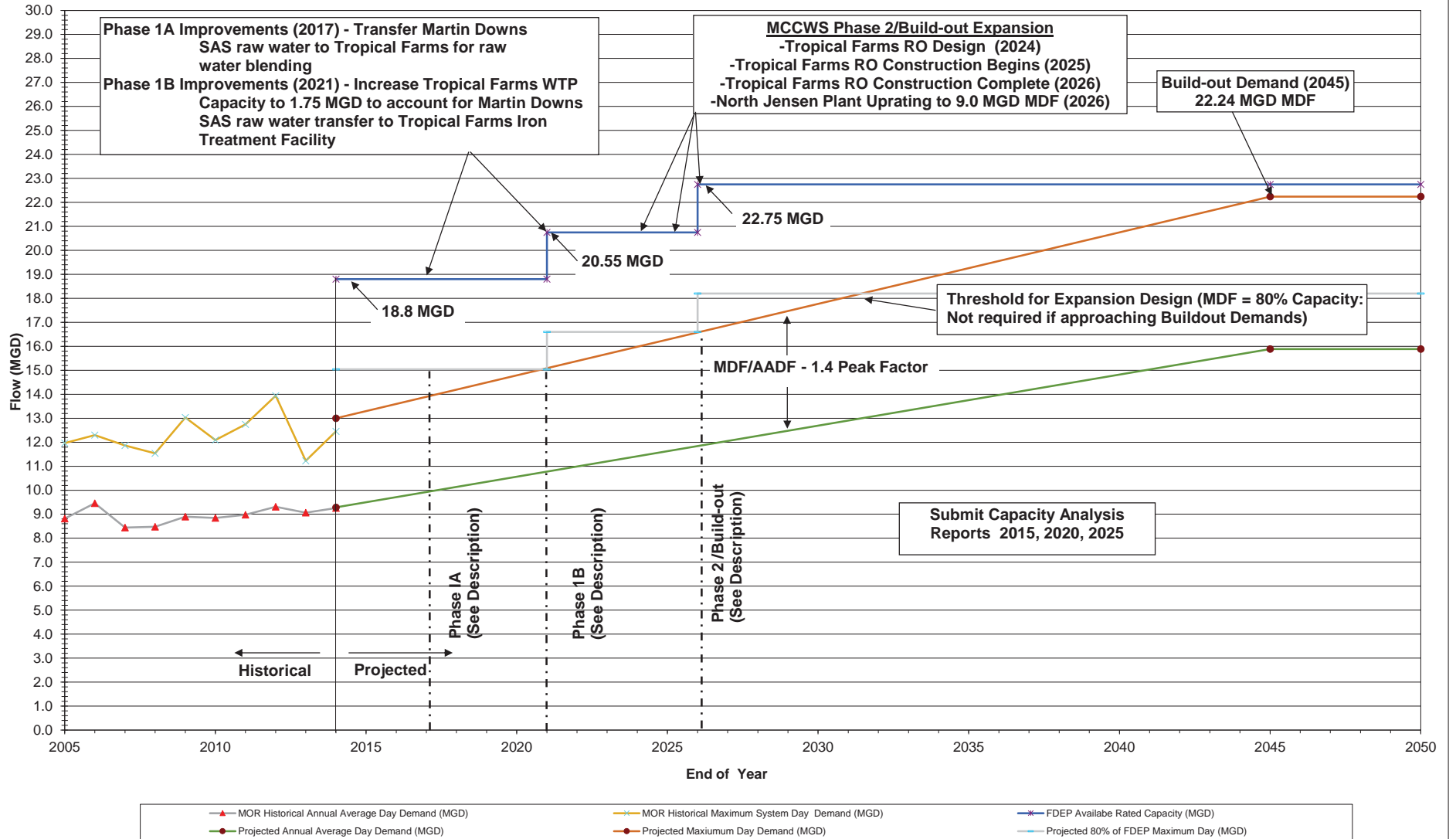
The peaks are: CR-713 I-95 to CR-714 (PM/NB); CR-713 CR-714 to Murphy (AM/SB); CR-A1A (PM/SB); Murphy Rd (PM/NB); SR-5 (PM/NB); and SR-714 (AM/WB).

Appendix 3

Figure 3 – 1 Water System Master Plan

Past Total Water Production & Projected Total Water
Demand for MCCWS Service Area

Figure 3-1 Past Total Water Production & Projected Total Water Demand for MCCWS Service Area



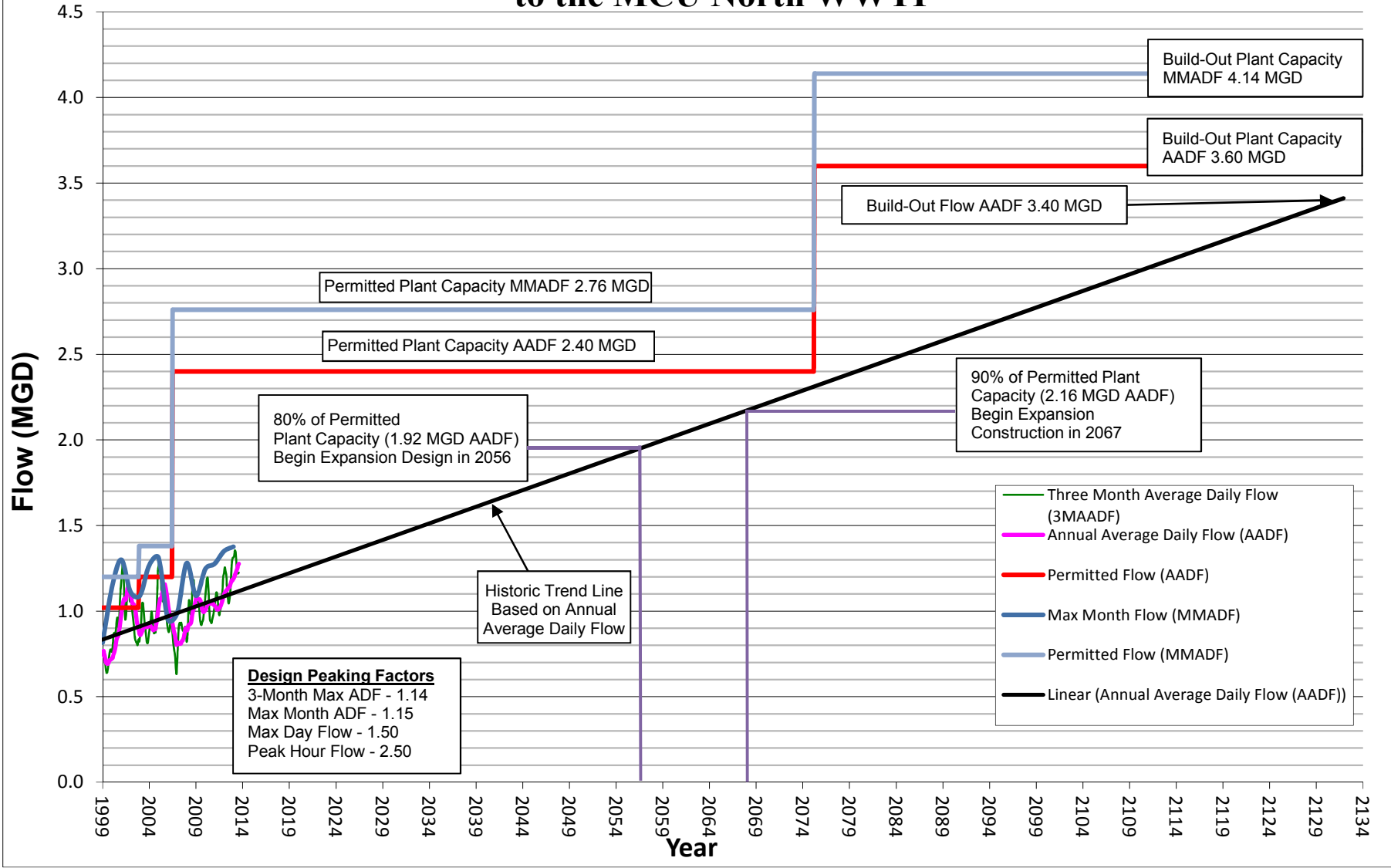
Appendix 4

Figure 2-6

Wastewater and Reclaimed Water Master Plan

Historical and Projected Wastewater Flow to the MCU
North WWTP

Figure 2-6: Historical and Projected Wastewater Flow to the MCU North WWTP



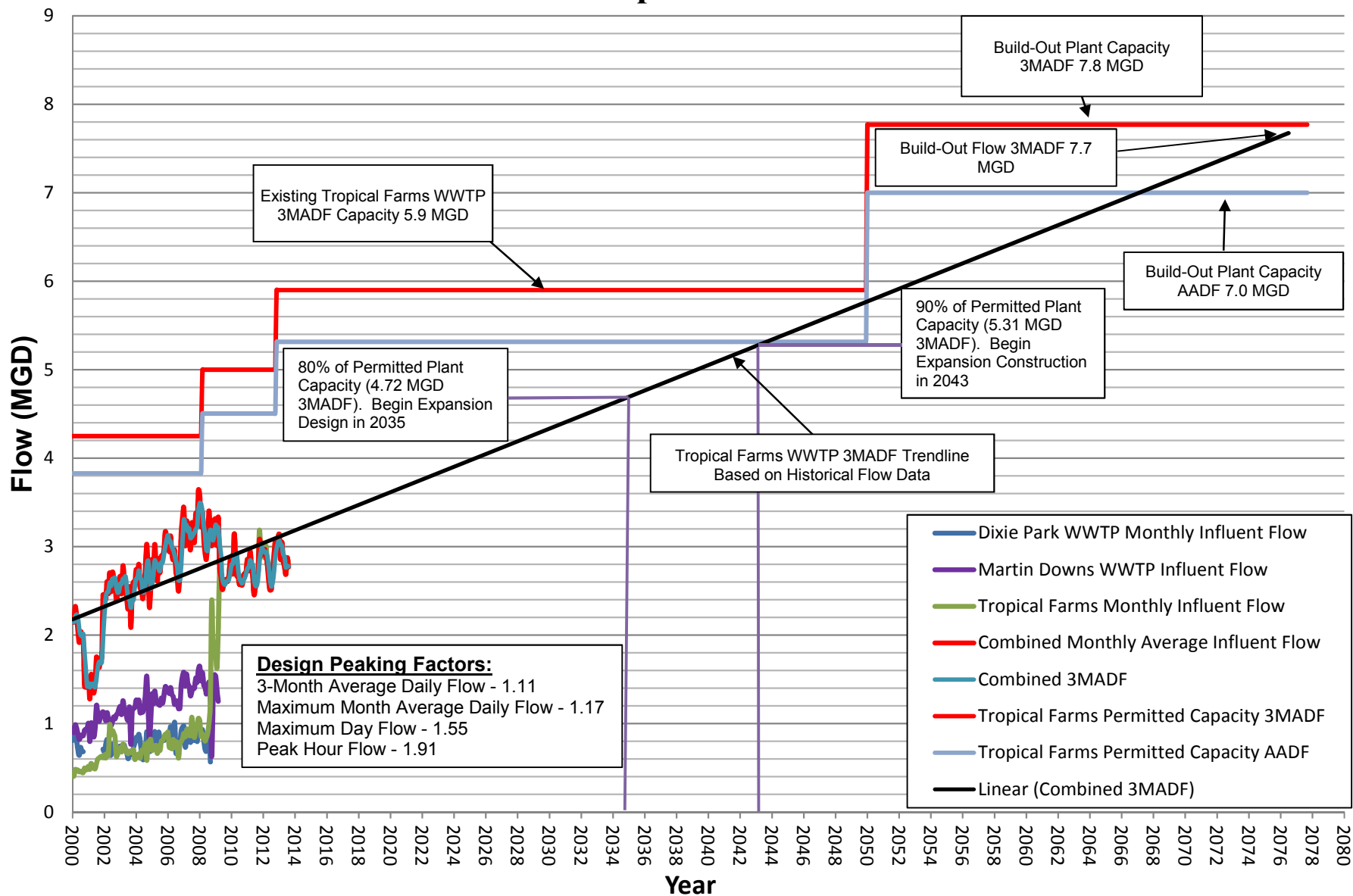
Appendix 5

Figure 2-7

Wastewater and Reclaimed Water Master Plan

Historical and Projected Wastewater Flow to the MCU
Tropical Farms WWTP

Figure 2-7: Historical and Projected Wastewater Flow to the MCU Tropical Farms WWTP



Appendix 6

Level of Service Analysis

FY18 Active Parkland

LEVEL OF SERVICE ANALYSIS - ACTIVE PARKLAND - FY18

CATEGORY A

LOS: 3 ACRES PER 1,000 POPULATION

LOS SERVICE AREA: COUNTY

FISCAL		ACRES	REQUIRED	CURRENT	ACRES CUM
YEAR	TOT POP	AVAIL.	LOS	LOS	SURPLUS OR
	1 Apr of FY	1 Oct of FY			DEFICIT (-)
FY18	155,245	1097	3	7.07	631
FY19	156,972	1097	3	6.99	626
FY20	158,700	1097	3	6.91	621
FY21	160,080	1097	3	6.85	617
FY22	161,460	1097	3	6.79	613
FY23	162,840	1097	3	6.74	608
FY24	164,220	1097	3	6.68	604
FY25	165,600	1097	3	6.62	600
FY26	166,760	1097	3	6.58	597
FY27	167920	1097	3	6.53	593

INVENTORY	ACRES
SSgt Justin Johnson Memorial Park at Bannockburn	4.0
Big Mound	21.6
Booker Park	5.76
Owen K. Murphy Memorial Boat Ramp	0.5
Citrus Grove	26
Cove Road	1.5
C-23 Park	3.08
County Line	3.2
David L. Anderson M. S.	5.49
Eastridge	4.0
Greenfield	0.6
Halpatiokee Regional	110
Hidden Oaks	10
Hobe Sound Comm. Ctr.	0.9
Hosford	5.25
Indian RiverSide Park	51.3
Indiantown Middle	8.13
J V Reed	11.5
Jensen Beach Boat Ramp	3.8
Jensen Causeway	20

Jensen Elementary	9
Jimmy Graham	17.3
Jock Leighton Park	13
Joe's River	1.6
Lamar Howard	3.60
Lance Corporal Justin Wilson Memorial Par	29.9
Langford	19.7
Leilani Heights	0.55
Leighton Park	5
Maggy's Hammock Park	2.00
Martin County Golf Course	304.14
Martin County High	28.30
Martin Grade	4.2
Mary Brogan	8.20
Murray Middle	6.00
New Monrovia	2.00
Palm City Elementary	3.5
Palm Lake Park	9
Peck Lake	7.2
Pendarvis Cove	6.6
Pettway	0.8
Phipps	54.0
Pineapple Park	29.7
Pinewood Track	1.80
Paul Larson Park	0.20
Post Family Park	8.3
Porter	0.5
Rio Nature Park	2.5
Rio/Jensen Beach Skate Park	3
Sailfish Splash Waterpark	19.70
Sandsprit	15.30
William G Doc Meyers Park	25
Fire Station 36 Park	0.4
South Fork High	16.2
Stuart Beach	23.8
Stuart Causeway	12.6
Timer Powers	38.2
Tropical Farms Park	4.3
Twin Rivers Park	16.35
Wojcieszak	12.20
YMCA	30
Zeus	5.0
Total	1,097

Concurrency Formulas per 2008 ILA

CSA		Step 1			Step 2		
<i>Stuart CSA</i>	Perm. Cap.		Title 1		Temp. Cap.	Conc.	

ELEM.

JDP	695	x	85%	=	591	+	37.5	628
PWE	750	x	85%	=	638	+	37.5	675
PSE	750	x	85%	=	638	+	37.5	675
	2195							1978

MIDDLE

None

HIGH

MCHS	1800	x		=	1800	+	360	2160
								2160

<i>Palm City CSA</i>	Perm. Cap.		Title 1		Temp. Cap.	Conc.
----------------------	------------	--	---------	--	------------	-------

ELEM.

BCE	599	x		=	599	+	37.5	637
CGE	750	x		=	750	+	37.5	787.5
PCE	678	x		=	678	+	37.5	716
	2027							2140

MIDDLE

HOMS	1200	x		=	1200	+	144	1344
								1344

HIGH

None

<i>South CSA</i>	Perm. Cap.		Title 1		Temp. Cap.	Conc.
------------------	------------	--	---------	--	------------	-------

ELEM.

CLE	611	x		=	611	+	37.5	649
HSE	750	x	85%	=	638	+	37.5	675
SWE	750	x	85%	=	638	+	37.5	675
	2111							1999

MIDDLE

AMS	1184	x	85%	=	1006	+	144	1150
MMS	842	x		=	842	+	144	986
								2136

HIGH

SFHS	1614	x		=	1614	+	360	1974
------	------	---	--	---	------	---	-----	-------------

<i>North CSA</i>	Perm. Cap.		Title 1		Temp. Cap.	Conc.
------------------	------------	--	---------	--	------------	-------

ELEM.

JBE	668	x		=	668	+	37.5	706
FAWE	635	x		=	635	+	37.5	672.5
								1378

MIDDLE

SMS 1179 x = 1179 + 144 **1323**

HIGH

JBHS 1554 x = 1554 + 360 **1914**

WEST	Perm. Cap.		Title 1		Temp. Cap.	Conc.
-------------	------------	--	---------	--	------------	-------

ELEM.

WES 750 x 85% = 638 + 37.5 675
675

MIDDLE

IMS 905 x 85% = 769 + 144 **913**

HIGH

None

MCS D School Sites
Utilization Rates / Seats Available

SCHOOLS	TOTAL PERMANENT S. STATIONS	TOTAL RELOCATABLE S. STATIONS	TOTAL FISH CAPACITY 16/17	UTILIZATION FACTOR	DATE CERTAIN ENROLLMENT 10/13/17	CURRENT SEATS AVAILABLE	# OF EXIST. PORTABLES	PROJECTED ENROLLMENT 18/19
Bessey Creek Elem	599	0	599	94%	566	33	0	582
Citrus Grove Elem	767	0	767	88%	675	92	0	695
Crystal Lake Elem	611	77	688	84%	575	113	5	585
Felix Williams Elem	635	36	671	95%	636	35	2	622
Hobe Sound Elem	776	0	776	81%	626	150	0	574
JD Parker Elem	695	0	695	95%	658	37	0	677
Jensen Beach Elem	668	54	722	84%	604	118	3	615
Palm City Elem	678	36	714	92%	657	57	2	655
Pinewood Elem	756	108	864	97%	834	30	6	848
Port Salerno Elem	877	54	931	91%	844	87	3	825
Sea Wind Elem	764	0	764	85%	648	116	0	654
Warfield Elem	886	0	886	85%	751	135	0	737
TOTAL	8712	365	9077		8074	1003	22	8069

Anderson Middle	1316	0	1184	86%	1022	162	0	1025
Hidden Oaks Middle	1345	132	1329	81%	1080	249	6	1057
Indiantown* Middle	949	0	854	72%	618	236	0	643
Murray Middle	935	176	999	76%	760	239	8	761
Stuart Middle	1330	0	1197	78%	937	260	0	968
TOTAL	5875	308	5563		4417	1146	14	4454

*Note: 90% factor applied in Total Fish Capacity for Middle School per DOE Requirements

Jensen Beach High	1636	0	1554	103%	1601	-47	0	1580
Martin County	1838	307	2037	110%	2249	-212	15	2259
South Fork High	1699	75	1685	115%	1935	-250	3	1988
TOTAL	5173	382	5276		5785	-509	18	5827

*Note: 95% factor applied in Total Fish Capacity for High School per DOE Requirements

Willoughby Learning Ctr.	171	0	171	41%	70	101	0	74
Spectrum Jr./Sr. High	130	88	218	20%	44	174	4	50
TOTAL	301	88	389		114	275	4	124
School Totals			20305		18390	1915	58	18474

Notes :**TOTAL FISH CAPACITY**

FISH is a computerized inventory system used by the Florida Department of Education (FLDOE) to account for parcel, buildings, and rooms in public educational facilities. FISH is a component of the Educational Facilities Information System (EFIS) database that is integrated with the programs for student enrollment and capacity analysis, educational plant surveys, the 5-year facility work plan, and school construction project tracking. The critical feature in FISH is the designation of classrooms and other instructional spaces that are automatically assigned student stations which become the basis for determining school capacity.

MCS D School Sites
5-Year Student Projections with Capacities

School \ Year	2016-2017 Actual (Oct)	2017-2018 Actual (Oct)	2018-2019 Projected	2019-2020 Projected	2020-2021 Projected	2021-2022 Projected	2022-2023 Projected	PERM STATIONS	PORT STATIONS	TOTAL STATIONS	TOTAL CAPACITY
Bessey Creek Elem	541	566	582	575	573	568	567	599	0	599	599
Citrus Grove	688	675	695	730	745	755	754	767	0	767	767
Crystal Lake	580	575	585	601	611	599	588	611	77	688	688
Felix Williams	645	636	622	621	608	606	599	635	36	671	671
Hobe Sound	626	572	574	557	546	527	523	776	0	776	776
JD Parker	686	658	677	660	679	671	663	695	0	695	695
Jensen Beach	609	604	615	600	584	590	587	668	54	722	722
Palm City	680	657	655	666	658	663	663	678	36	714	714
Pinewood	860	834	848	836	822	834	837	756	108	864	864
Port Salerno	844	803	825	849	848	878	884	877	54	931	931
Sea Wind	675	648	654	662	671	689	701	764	0	764	764
Warfield Elem*	751	750	737	723	723	695	693	886	0	886	886
Elementary Total	8185	7978	8069	8080	8068	8075	8059	8712	365	9077	9077
Anderson Middle	952	1022	1025	1009	974	983	995	1316	0	1316	1184
Hidden Oaks	1039	1080	1057	1070	1056	1068	1073	1345	132	1477	1329
Indiantown*	558	618	643	662	649	623	604	949	0	949	854
Murray Middle	725	760	761	763	745	737	727	935	176	1111	999
Stuart Middle	970	937	968	982	982	987	986	1330	0	1330	1197
Middle Total	4244	4417	4454	4486	4406	4398	4385	5875	308	6183	5564
Jensen Beach High	1601	1600	1580	1643	1666	1673	1674	1636	0	1636	1554
Martin County High	2281	2249	2259	2282	2268	2350	2369	1838	307	2145	2038
South Fork High	1913	1935	1988	1986	1977	1995	2000	1699	75	1774	1685
High School Total	5795	5784	5827	5911	5911	6018	6043	5173	382	5555	5277

* Warfield 5th Graders attend Indiantown Middle

ALL SCHOOLS	18,224	18,179	18,350	18,477	18,385	18,491	18,487	19,760	1,055	20,815	19,918
--------------------	---------------	---------------	---------------	---------------	---------------	---------------	---------------	---------------	--------------	---------------	---------------

Applied
Factor

Appendix 8

Level of Service Analysis

Beaches

LEVEL OF SERVICE ANALYSIS - BEACH FACILITIES - FY18

CATEGORY B

LOS: 9 PARKING SPACES PER 1000 RESIDENTS

LOS SERVICE AREA: COUNTY

FISCAL		SPACES	REQUIRED	CURRENT	CUM SPACES
YEAR	TOT POP	AVAIL.	LOS	LOS	SURPLUS OR
	1 Apr of FY	FY			DEFICIT (-)
FY18	155,245	1439	9	9.3	42
FY19	156,972	1439	9	9.2	26
FY20	158,700	1439	9	9.1	11
FY21	160,080	1439	9	9.0	-2
FY22	161,460	1439	9	8.9	-14
FY23	162,840	1439	9	8.8	-27
FY24	164,220	1439	9	8.8	-39
FY25	165,600	1439	9	8.7	-51
FY26	166,760	1439	9	8.6	-62
FY27	167,920	1439	9	8.6	-72

INVENTORY	SPACES
Bathtub Reef	106
Beach Walk Pasley	30
Bob Graham	69
Bryn Mawr	23
Chastain	30
Fletcher	5
Glasscock	28
Hobe Sound	90
House of Refuge	20
Jensen Beach	497
Santa Lucea	47
Stokes	10
Stuart	335
Tiger Shores	40
Virginia Beach	20
Wildlife Refuge	89
Total	1439

Appendix 9

Level of Service Analysis

Libraries

LEVEL OF SERVICE ANALYSIS - LIBRARIES - FY18

CATEGORY B

LOS: .60 GSF PER RESIDENT AND 2 VOLUMES PER WEIGHTED AVERAGE RESIDENT

LOS SERVICE AREA: COUNTY

FISCAL YEAR	TOT POP	GSF AVAIL.	REQUIRED LOS	CURRENT LOS	GSF CUM SURPLUS OR DEFICIT (-)
	1 Apr of FY	1 Oct of FY			
FY18	162,423	110,026	0.6	0.68	12,572
FY19	164,150	110,026	0.6	0.67	11,536
FY20	165,878	110,026	0.6	0.66	10,499
FY21	167,258	110,026	0.6	0.66	9,671
FY22	168,638	110,026	0.6	0.65	8,843
FY23	170,018	110,026	0.6	0.65	8,015
FY24	171,398	110,026	0.6	0.64	7,187
FY25	172,778	110,026	0.6	0.64	6,359
FY26	173,938	110,026	0.6	0.63	5,663
FY27	175,098	110,026	0.6	0.63	4,967

FISCAL YEAR	WT AVER TOT POP	VOLUMES AVAIL.	REQUIRED LOS	CURRENT LOS	VOL CUM SURPLUS OR DEFICIT (-)
	1 Apr of FY	1 Oct of FY			
FY18	162,423	289,913	2	1.78	-34,933
FY19	164,150	289,913	2	1.77	-38,387
FY20	165,878	289,913	2	1.75	-41,843
FY21	167,258	289,913	2	1.73	-44,603
FY22	168,638	289,913	2	1.72	-47,363
FY23	170,018	289,913	2	1.71	-50,123
FY24	171,398	289,913	2	1.69	-52,883
FY25	172,778	289,913	2	1.68	-55,643
FY26	173,938	289,913	2	1.67	-57,963
FY27	175,098	289,913	2	1.66	-60,283

BOOK INVENTORY	VOLUMES
Total	289,913

BLDG. INVENTORY	GSF
Blake	39,000
Cummings	20,000
Hobe Sound	10,900
Hoke	10,320
Indiantown	10,006
Robert Morgade	15,000
B&A Warehouse	4,800
Total	110,026

LEVEL OF SERVICE ANALYSIS - LIBRARIES - FY18

CATEGORY B

LOS: .60 GSF PER RESIDENT AND 2 VOLUMES PER WEIGHTED AVERAGE RESIDENT

LOS SERVICE AREA: COUNTY

FISCAL YEAR	TOT POP	GSF AVAIL.	REQUIRED LOS	CURRENT LOS	GSF CUM SURPLUS OR DEFICIT (-)
	1 Apr of FY	1 Oct of FY			
FY18	162,423	110,026	0.6	0.68	12,572
FY19	164,150	110,026	0.6	0.67	11,536
FY20	165,878	110,026	0.6	0.66	10,499
FY21	167,258	110,026	0.6	0.66	9,671
FY22	168,638	110,026	0.6	0.65	8,843
FY23	170,018	110,026	0.6	0.65	8,015
FY24	171,398	110,026	0.6	0.64	7,187
FY25	172,778	110,026	0.6	0.64	6,359
FY26	173,938	110,026	0.6	0.63	5,663
FY27	175,098	110,026	0.6	0.63	4,967

FISCAL YEAR	WT AVER TOT POP	VOLUMES AVAIL.	REQUIRED LOS	CURRENT LOS	VOL CUM SURPLUS OR DEFICIT (-)
	1 Apr of FY	1 Oct of FY			
FY18	162,423	289,913	2	1.78	-34,933
FY19	164,150	289,913	2	1.77	-38,387
FY20	165,878	289,913	2	1.75	-41,843
FY21	167,258	289,913	2	1.73	-44,603
FY22	168,638	289,913	2	1.72	-47,363
FY23	170,018	289,913	2	1.71	-50,123
FY24	171,398	289,913	2	1.69	-52,883
FY25	172,778	289,913	2	1.68	-55,643
FY26	173,938	289,913	2	1.67	-57,963
FY27	175,098	289,913	2	1.66	-60,283

BOOK INVENTORY	VOLUMES
Total	289,913

BLDG. INVENTORY	GSF
Blake	39,000
Cummings	20,000
Hobe Sound	10,900
Hoke	10,320
Indiantown	10,006
Robert Morgade	15,000
B&A Warehouse	4,800
Total	110,026