

# Investment Program

**Project Completion Report  
Applicant No. 010 – Jensen Beach CRA  
Property Improvement  
1930 NE Jensen Beach Boulevard  
ACJB LLC**



GOLDEN GATE

HOBE SOUND

JENSEN BEACH

OLD PALM CITY

PORT SALERNO

RIO





# ABOUT THE PROGRAM

Now that each CRA area has completed enhanced streetscapes, stormwater, water and sewer infrastructure and roadway improvements, the Agency has introduced an additional strategy to continue the CRA's successful redevelopment journey. The CRA Investment Program was presented and approved by the Board of County Commissioners on 11/22/2022. This program is a CRA-wide program available to commercial property owners and businesses within the six (6) CRA areas and is intended to facilitate successful redevelopment by addressing individual area needs through targeted programs like the **Property Improvement** and the **Fence/Landscape Program**.



GOLDEN GATE

HOBE SOUND

JENSEN BEACH

OLD PALM CITY

PORT SALERNO

RIO





# PROGRAM TYPES

## Property Improvement

**80% reimbursement of project cost, up to a maximum of \$20,000**

### **Qualifying Activities:**

- exterior painting
- installation of awnings
- new windows and/or doors
- exterior signage
- landscaping
- parking lot improvements
- repair or addition of exterior architectural elements (e.g., addition or improvement of balconies, porches, entryways or arcades)
- lighting
- decorative pavement
- dumpster enclosures
- fencing

## Fence/Landscape

**80% reimbursement of project cost, up to a maximum of \$10,000**

### **Qualifying Activities**

- Landscaping
- Fencing



# TARGET AREAS

- **Golden Gate:** Properties in the Core, Corridor, Industrial, and General Subdistricts
- **Hobe Sound:** Properties in the Core, Corridor, and Railroad Corridor Subdistricts
- **Jensen Beach:** **All properties** within the Jensen Beach CRA boundaries
- **Old Palm City:** All properties within the Old Palm City CRA boundaries
- **Port Salerno:** Properties in the Core Subdistrict and General and Corridor Subdistricts that front Salerno Road
- **Rio:** Properties in the Core or Corridor Subdistricts that also front NE Dixie

**Only properties in these target areas are eligible to apply**



GOLDEN GATE

HOBE SOUND

JENSEN BEACH

OLD PALM CITY

PORT SALERNO

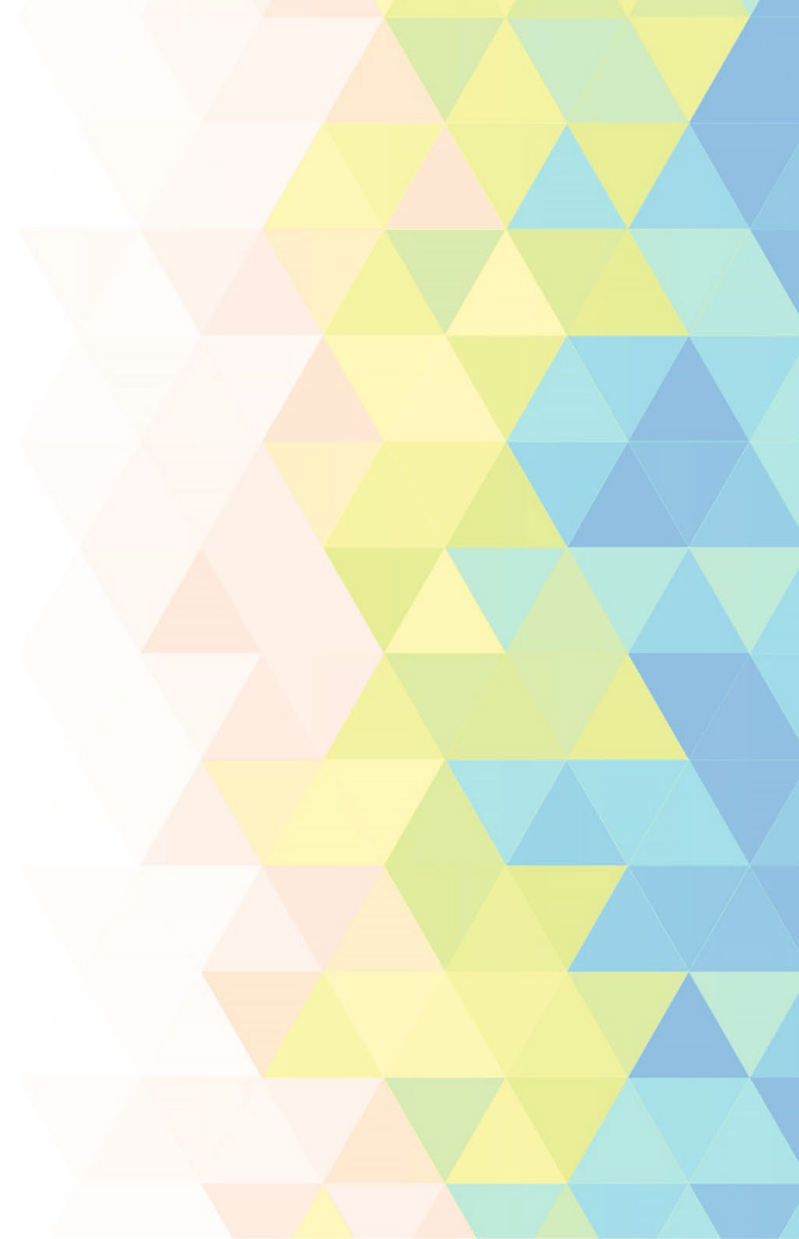
RIO





# PROCESS

1. Are you a property owner or do you own a business in the targeted areas?
2. Review and complete the application and submit all required documents.
3. CRA staff will stay in touch and let you know when the application will be presented to the CRA board.
4. Once approved the work can start.
5. Once the project is completed the applicant must provide all required receipts before payment reimbursement.



GOLDEN GATE

HOBE SOUND

JENSEN BEACH

OLD PALM CITY

PORT SALERNO

RIO





# APPLICANT #010

- **Presented to CRA Board:** March 25, 2024
- **Property Owner: ACJB LLC** (Paul & Linda Kurkechian)
- **Location:** 1930 NE Jensen Beach Blvd (JB CRA)
- **Program Type:** Property Improvement
- **Proposed Building Improvements:** Paint Exterior of Building
- **Improvements completed:** May 2024
- **Reimbursed:** \$7,600 - June 2024
- **Owner Contribution:** \$1,900

*Comments from the applicant:*

- *We love the look of the building and the fabulous paint color.*
- *We have had several comments on how nice the building looks, and our tenants love it!*
- *Highly recommend the CRA Investment We would not have been able to update our look without the assist from Martin County.*



GOLDEN GATE

HOBE SOUND

JENSEN BEACH

OLD PALM CITY

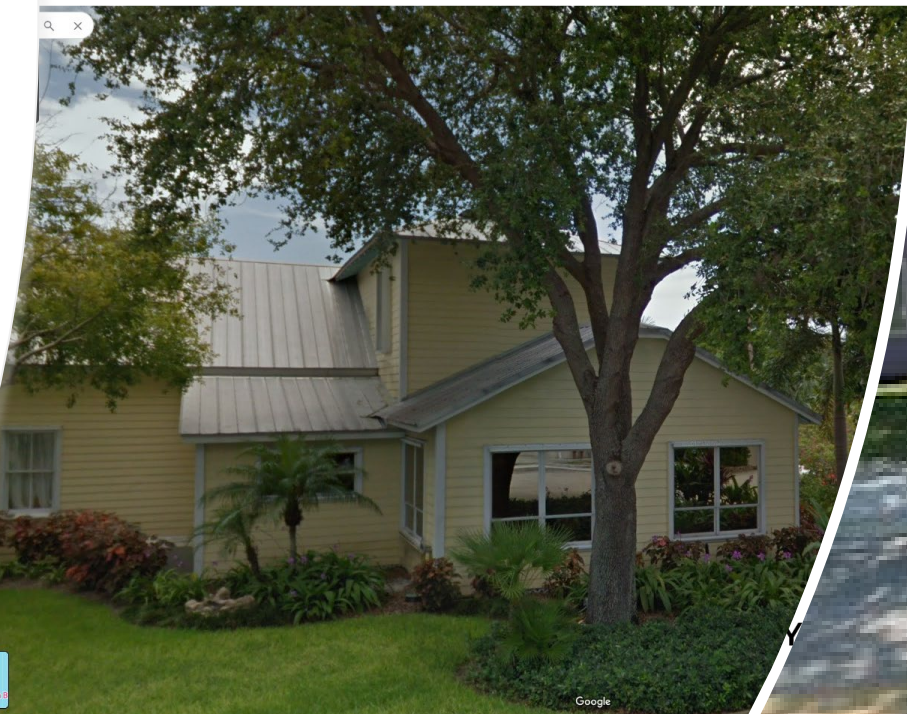
PORT SALERNO

RIO



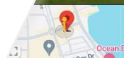


# Before and After



GOLDEN GATE

HOBE S



Google

# WHERE TO APPLY



The screenshot shows the Martin County Florida website. At the top, there is a search bar with the text "Enter Keywords" and a magnifying glass icon. To the right of the search bar are links for "Directory", "Jobs", "News", "Request for Service", and "Employees". Below the search bar is the Martin County Florida logo and the tagline "Your County. Your Community.". A navigation menu includes "HOME", "RESIDENTS", "BUSINESS", "DEPARTMENTS", "THINGS TO DO", "I WANT TO", "SERVICES", "TRANSPARENCY", and "DOCUMENTS". The main content area shows the breadcrumb "Departments > Administration > Community Redevelopment Agency > CRA Investment Programs" and the heading "CRA INVESTMENT PROGRAM". On the left, there is a sidebar with links for "Program Fact Sheet", "Application Process", "Application Checklist", and "Application". The main content area has an "OVERVIEW" section with a blue underline. The text reads: "Now that each CRA area's Capital Improvement Program – enhanced streetscapes, stormwater, water and sewer infrastructure, roadway improvements and the construction of new neighborhoods – is progressing, the Agency would like to introduce an additional strategy to continue the CRA's successful redevelopment journey. The attraction of new businesses, retention of current operating businesses, assistance to struggling businesses and encouragement of private investment are important components of a robust and overall redevelopment strategy. These programs may be amended from time to time to address evolving strategies at various stages in the redevelopment process." Below this is a "TARGET AREAS PER CRA:" section with the text "Only properties in these target areas are eligible to apply:" followed by a bulleted list: 

- **Golden Gate:** Properties in the Core, Corridor, Industrial and General Subdistricts
- **Hobe Sound:** Properties in the Core, Corridor and Railroad Corridor Subdistricts
- **Jensen Beach:** All properties within the Jensen Beach CRA boundaries
- **Old Palm City:** All properties within the Old Palm City CRA boundaries
- **Port Salerno:** Properties in the Core Subdistrict and General and Corridor Subdistricts that front Salerno Road
- **Rio:** Properties in the Core or Corridor Subdistricts that also front NE Dixie

Packet (in the back/Admin building)

OR

[martin.fl.us/CRAInvestmentProgram](http://martin.fl.us/CRAInvestmentProgram)

OR



GOLDEN GATE

HOBE SOUND

JENSEN BEACH

OLD PALM CITY

PORT SALERNO

RIO







# Thank you!

# Any Questions?



This document may be reproduced upon request in an alternative format by contacting the County ADA Coordinator (772) 320-3131, the County Administration Office (772) 288-5400, Florida Relay 711, or by completing our accessibility feedback form at: [www.martin.fl.us/accessibility-feedback](http://www.martin.fl.us/accessibility-feedback)



**GOLDEN GATE**

**HOBE SOUND**

**JENSEN BEACH**

**OLD PALM CITY**

**PORT SALERNO**

**RIO**

