

Investment Program

Project Completion Report

Applicant No.: 007

Stuart Plaza Condominium Association, Inc.

Golden Gate CRA



GOLDEN GATE

HOBE SOUND

JENSEN BEACH

OLD PALM CITY

PORT SALERNO

RIO





ABOUT THE PROGRAM

Now that each CRA area has completed enhanced streetscapes, stormwater, water and sewer infrastructure and roadway improvements, the Agency has introduced an additional strategy to continue the CRA's successful redevelopment journey. The CRA Investment Program was presented and approved by the Board of County Commissioners on 11/2022. This program is a CRA-wide program available to commercial property owners and businesses within the six (6) CRA areas and is intended to facilitate successful redevelopment by addressing individual area needs through targeted programs like the **Property Improvement** and the **Fence/Landscape Program**.



GOLDEN GATE

HOBE SOUND

JENSEN BEACH

OLD PALM CITY

PORT SALERNO

RIO





PROGRAM TYPES

Property Improvement

80% reimbursement of project cost, up to a maximum of \$20,000

Qualifying Activities:

- exterior painting, stucco or siding
- installation of awnings
- new windows and/or doors
- exterior signage
- Landscaping (which includes new irrigation)
- parking lot improvements
- repair or addition of exterior architectural elements (e.g., addition or improvement of balconies, porches, entryways or arcades)
- lighting
- decorative pavement
- dumpster enclosures
- fencing

Fence/Landscape

80% reimbursement of project cost, up to a maximum of \$10,000

Qualifying Activities

- Landscaping
- Fencing



TARGET AREAS

- **Golden Gate:** Properties in the Core, Corridor, **Industrial**, and General Subdistricts
- **Hobe Sound:** Properties in the Core, Corridor, and Railroad Corridor Subdistricts
- **Jensen Beach:** All properties within the Jensen Beach CRA boundaries
- **Old Palm City:** All properties within the Old Palm City CRA boundaries
- **Port Salerno:** Properties in the Core Subdistrict and General and Corridor Subdistricts that front Salerno Road
- **Rio:** Properties in the Core or Corridor Subdistricts that also front NE Dixie

Only properties in these target areas are eligible to apply



GOLDEN GATE

HOBE SOUND

JENSEN BEACH

OLD PALM CITY

PORT SALERNO

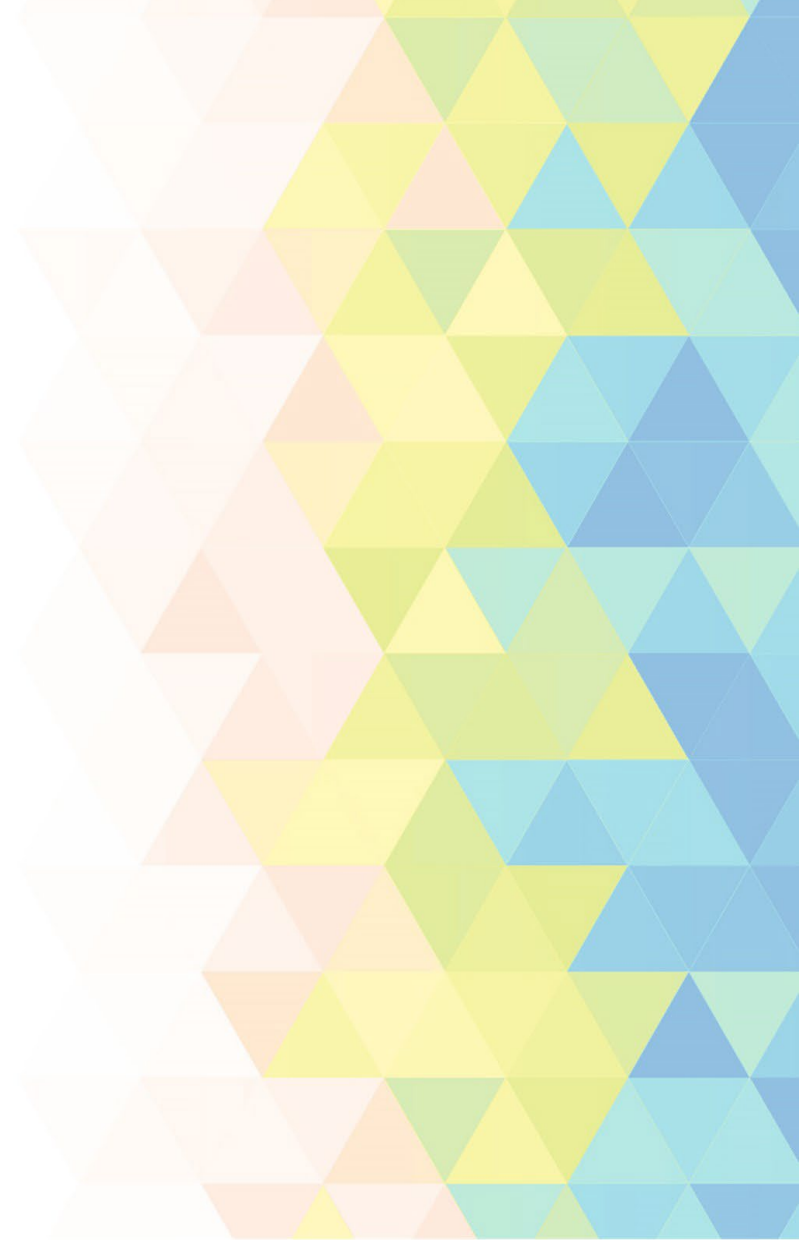
RIO





PROCESS

1. Are you a property owner or do you own a business in the targeted areas?
2. Review and complete the application and submit all required documents.
3. CRA staff will stay in touch and let you know when the application will be presented to the CRA board.
4. Once approved the work can start.
5. Once the project is completed the applicant must provide all required receipts before payment reimbursement.



GOLDEN GATE

HOBE SOUND

JENSEN BEACH

OLD PALM CITY

PORT SALERNO

RIO





APPLICANT #007

- **Presented to CRA Board:** February 26, 2024
- **Improvements completed:** April 2024
- **Property Owners:** Stuart Plaza Condominium Association, Inc.
- **Location:** 3450 – 3498 SE Dixie Highway
- **Program Type:** Property Improvement
- **Building Improvements Completed:** Exterior Painting of Both Buildings (\$23,610), Remove Old Landscaping and Replace Along Front and Side (including trees \$15,601), New Irrigation (\$3,335) **Total Project Cost:** \$42,546
- **Reimbursed:** \$20,000 – May 2024
- **Owner Contribution:** \$22,546

Comments from the applicant:

- *The landscaping, new irrigation and painting of the buildings has greatly improved our plaza.*
- *Our tenants are happy and enjoy the new look. Applicant Testimonial below*





BEFORE AND AFTER EXTERIOR PAINT SIGNAGE





BEFORE AND AFTER EXTERIOR PAINT BUILDINGS





BEFORE & AFTER LANDSCAPING IRRIGATION REPLACED



GOLDEN GATE

H

WHERE TO APPLY



The screenshot shows the Martin County Florida website. At the top, there is a navigation bar with a search box labeled "Enter Keywords" and a language dropdown set to "English". The main header includes the county logo, the name "Martin County Florida", and the tagline "Your County. Your Community.". Below this is a menu with categories like HOME, RESIDENTS, BUSINESS, DEPARTMENTS, THINGS TO DO, I WANT TO, SERVICES, TRANSPARENCY, and DOCUMENTS. The main content area is titled "CRA INVESTMENT PROGRAM" and features a sidebar with links to "Program Fact Sheet", "Application Process", "Application Checklist", and "Application". The main text under "OVERVIEW" describes the program's goals and lists "TARGET AREAS PER CRA": Golden Gate, Hobe Sound, Jensen Beach, Old Palm City, Port Salerno, and Rio.

Packet (in the back/Admin building)

OR

martin.fl.us/CRAInvestmentProgram

OR



GOLDEN GATE

HOBE SOUND

JENSEN BEACH

OLD PALM CITY

PORT SALERNO

RIO

