

Investment Program

**Project Completion Report
Keeler Building located 9045 SE Bridge
Road in Hobe Sound
(Applicant #1)**



GOLDEN GATE

HOBE SOUND

JENSEN BEACH

OLD PALM CITY

PORT SALERNO

RIO





ABOUT THE PROGRAM

Now that each CRA area has completed enhanced streetscapes, stormwater, water and sewer infrastructure and roadway improvements, the Agency has introduced an additional strategy to continue the CRA's successful redevelopment journey. The CRA Investment Program was presented and approved by the Board of County Commissioners on 11/2022. This program is a CRA-wide program available to commercial property owners and businesses within the six (6) CRA areas and is intended to facilitate successful redevelopment by addressing individual area needs through targeted programs like the **Property Improvement** and the **Fence/Landscape Program**.



GOLDEN GATE

HOBE SOUND

JENSEN BEACH

OLD PALM CITY

PORT SALERNO

RIO





PROGRAM TYPES

Property Improvement

80% reimbursement of project cost, up to a maximum of \$20,000

Qualifying Activities:

- exterior painting, stucco or siding
- installation of awnings
- new windows and/or doors
- exterior signage
- landscaping
- parking lot improvements
- repair or addition of exterior architectural elements (e.g., addition or improvement of balconies, porches, entryways or arcades)
- lighting
- decorative pavement
- dumpster enclosures
- fencing

Fence/Landscape

80% reimbursement of project cost, up to a maximum of \$10,000

Qualifying Activities

- Landscaping
- Fencing



TARGET AREAS

- **Golden Gate:** Properties in the Core, Corridor, Industrial, and General Subdistricts
- **Hobe Sound:** Properties in the **Core**, Corridor, and Railroad Corridor Subdistricts
- **Jensen Beach:** All properties within the Jensen Beach CRA boundaries
- **Old Palm City:** All properties within the Old Palm City CRA boundaries
- **Port Salerno:** Properties in the Core Subdistrict and General and Corridor Subdistricts that front Salerno Road
- **Rio:** Properties in the Core or Corridor Subdistricts that also front NE Dixie

Only properties in these target areas are eligible to apply



GOLDEN GATE

HOBE SOUND

JENSEN BEACH

OLD PALM CITY

PORT SALERNO

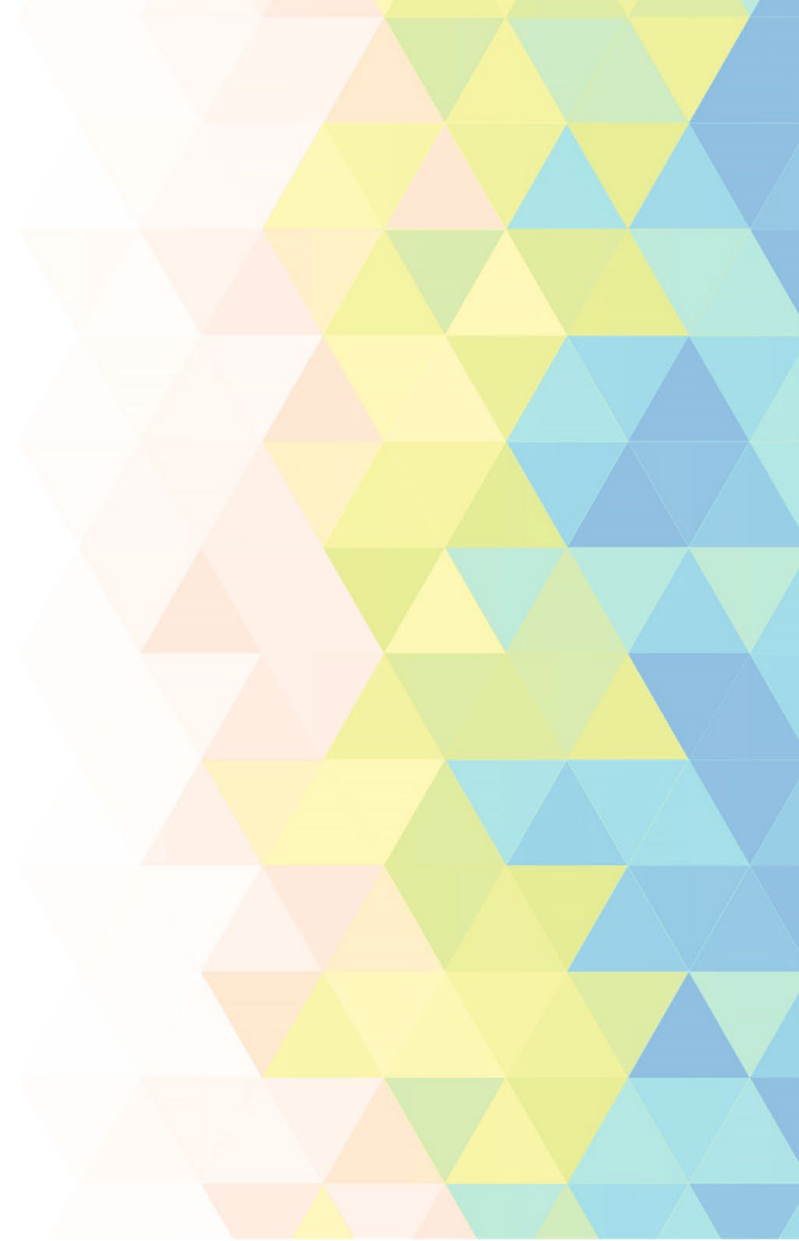
RIO





PROCESS

1. Are you a property owner or do you own a business in the targeted areas?
2. Review and complete the application and submit all required documents.
3. CRA staff will stay in touch and let you know when the application will be presented to the CRA board.
4. Once approved the work can start.
5. Once the project is completed the applicant must provide all required receipts before payment reimbursement.



GOLDEN GATE

HOBE SOUND

JENSEN BEACH

OLD PALM CITY

PORT SALERNO

RIO





APPLICANT #001

*Comments from the applicant:
"We were the very first applicants for the CRA Investment Program to upgrade our older building right in the middle of the redeveloped Bridge Road. The program allowed us to afford hurricane rated windows and doors, new awnings and façade improvements with a gorgeous new mural. This winning combination of structure improvements and public art adds interest and fun to the streetscape and compels people to stop and even take pictures! Working with the CRA was so easy and we are very pleased with the outcome!"*

- **Presented to CRA Board:** February 27, 2023
- **Improvements completed:** July 2023
- **Property Owner:** Michael and Patricia Keeler
- **Location:** 9045 SE Bridge Rd. Hobe Sound, FL 33455
- **Program Type:** Property Improvement
- **Building Improvements Completed:** Painting of the building (\$4,320), new entrance doors (\$10,154), new awnings (\$4,365) = **Total Project Cost:** \$18,839
- **Reimbursed:** \$15,071 - August 2023
- **Owner Contribution:** \$3,768



GOLDEN GATE

HOBE SOUND

JENSEN BEACH

OLD PALM CITY

PORT SALERNO

RIO



BEFORE & AFTER



GOLDEN GATE

HOBE SOUND

JENSEN BEACH

OLD PALM CITY

PORT SALERNO

RIO





RIBBON CUTTING



GOLDEN GATE



HOBE SOUND



JENSEN BEACH

OLD PALM CITY



PORT SALERNO

RIO



COMPLETION UP CLOSE



WHERE TO APPLY



The screenshot shows the Martin County Florida website. At the top, there is a navigation bar with a search box labeled "Enter Keywords" and a language dropdown set to "English". The main header includes the county logo, the name "Martin County Florida", and the tagline "Your County. Your Community.". Below this is a menu with categories like HOME, RESIDENTS, BUSINESS, DEPARTMENTS, THINGS TO DO, I WANT TO, SERVICES, TRANSPARENCY, and DOCUMENTS. The main content area shows the breadcrumb "Departments > Administration > Community Redevelopment Agency > CRA Investment Programs" and the title "CRA INVESTMENT PROGRAM". A sidebar on the left lists links for "Program Fact Sheet", "Application Process", "Application Checklist", and "Application". The main text under "OVERVIEW" explains the program's goal and lists "TARGET AREAS PER CRA" with bullet points for Golden Gate, Hobe Sound, Jensen Beach, Old Palm City, Port Salerno, and Rio.

Packet (in the back/Admin building)

OR

martin.fl.us/CRAInvestmentProgram

OR



GOLDEN GATE

HOBE SOUND

JENSEN BEACH

OLD PALM CITY

PORT SALERNO

RIO

